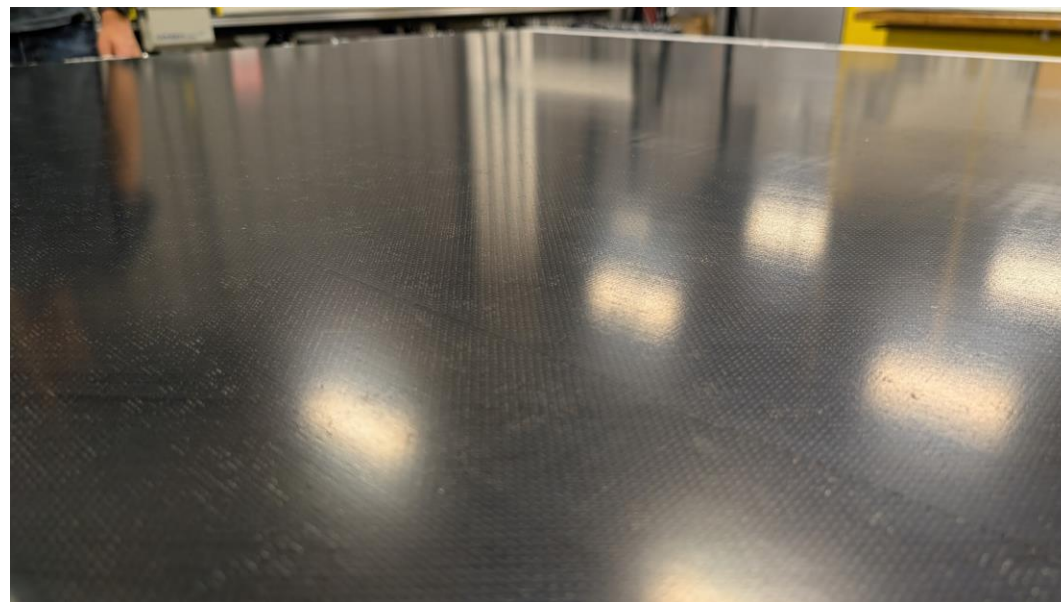
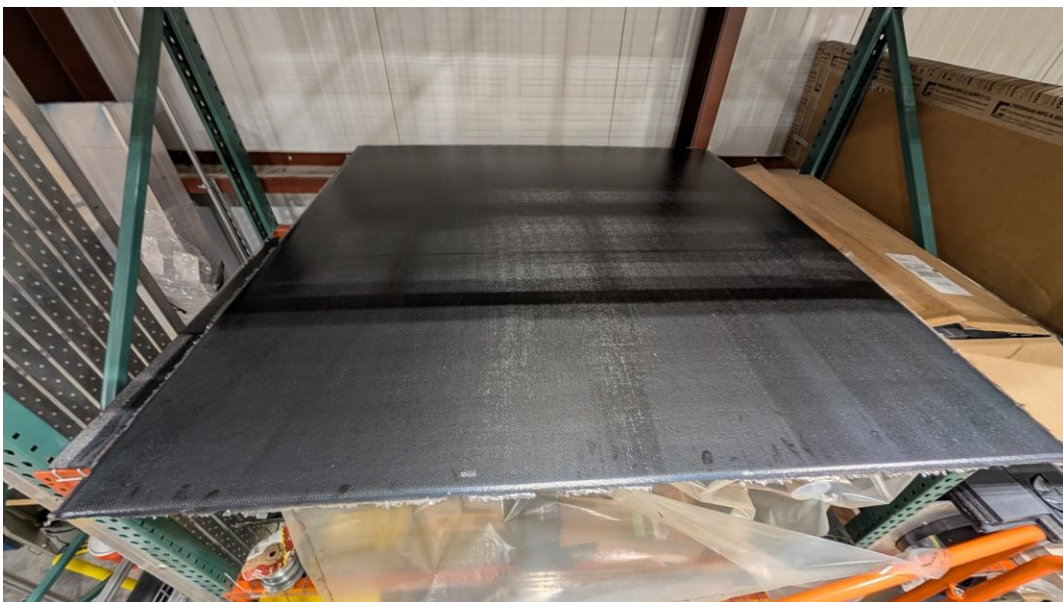
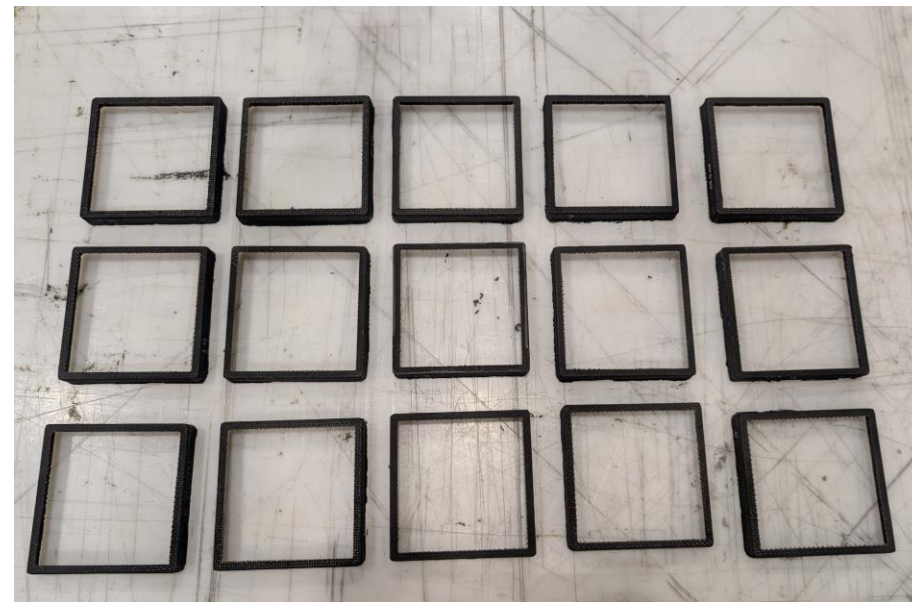
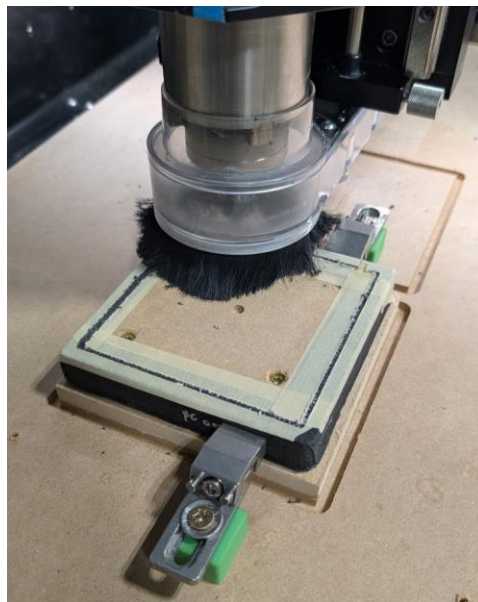


pfRICH Updates

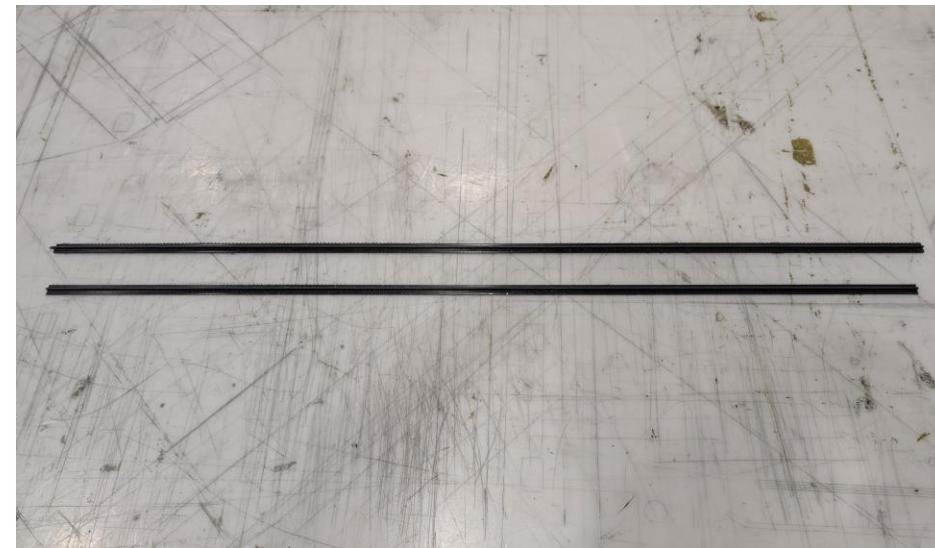
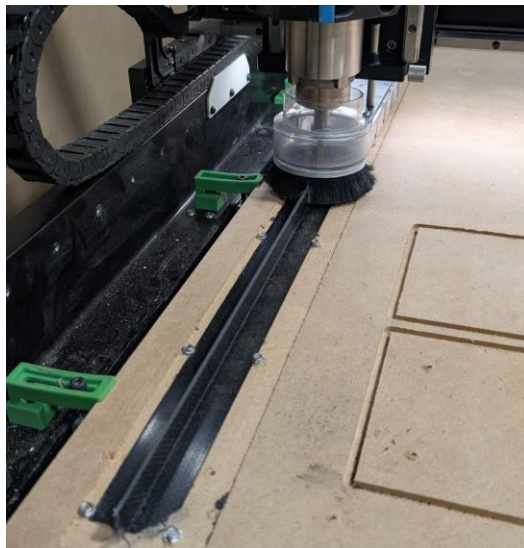
23 June 2025



- 56" x 56" 8 ply 0/90 symmetric, 1.89 mm/0.0745" thick
- Waiting on machine time



- Remaining sensor frames made
- Bottom face of all sensor frames trimmed on router



- T-beams made
- Trimmed to correct height and width

- Trim T-beams to length
- Cut backing plate on LSAT
- Assembly
 - Bond sensor to backing plate
 - Bond inserts
 - Bond T-beams
- Finishing
 - Face top edges of sensor frame on LSAT
 - Remove access adhesive & fill holes with adhesive