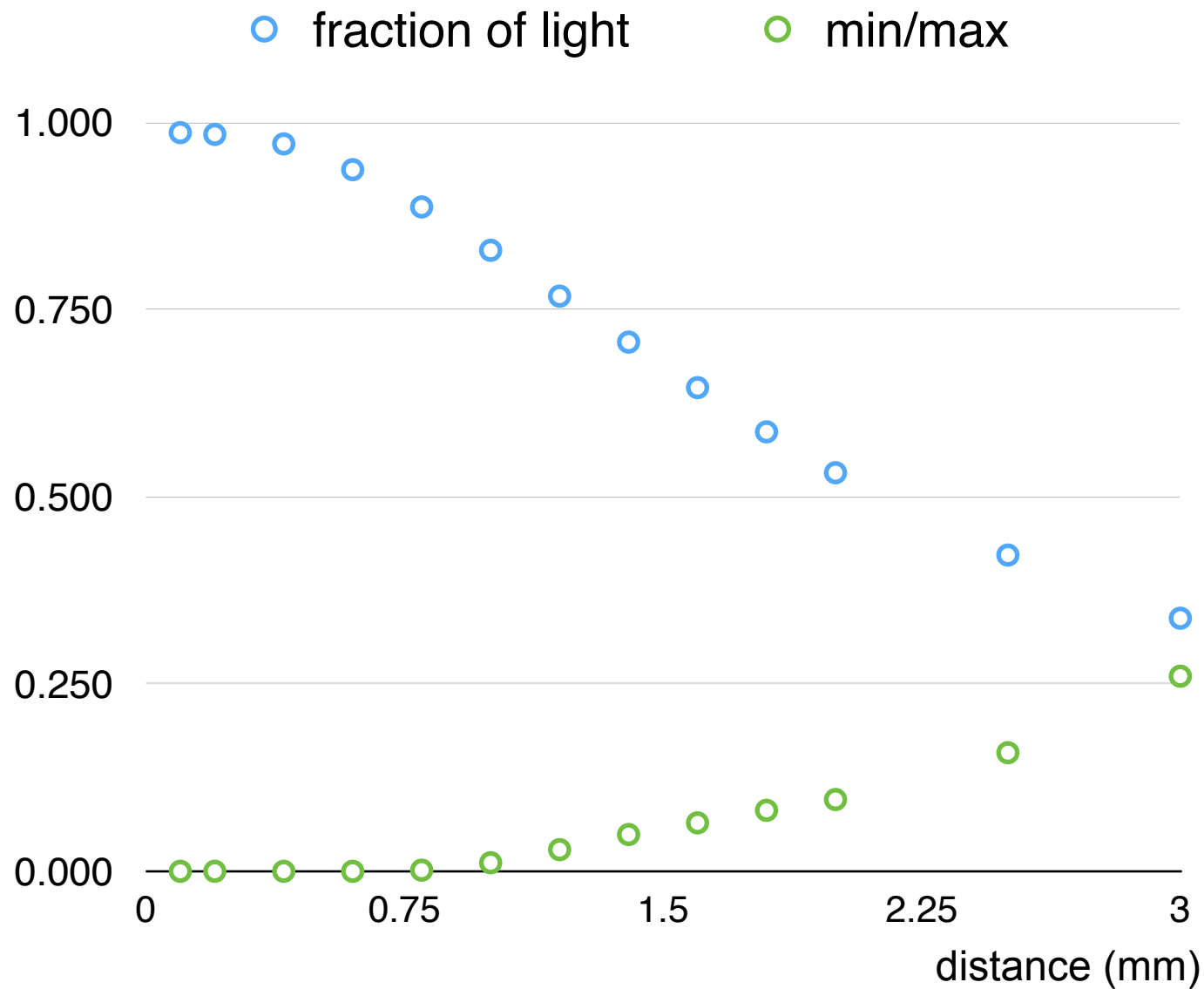


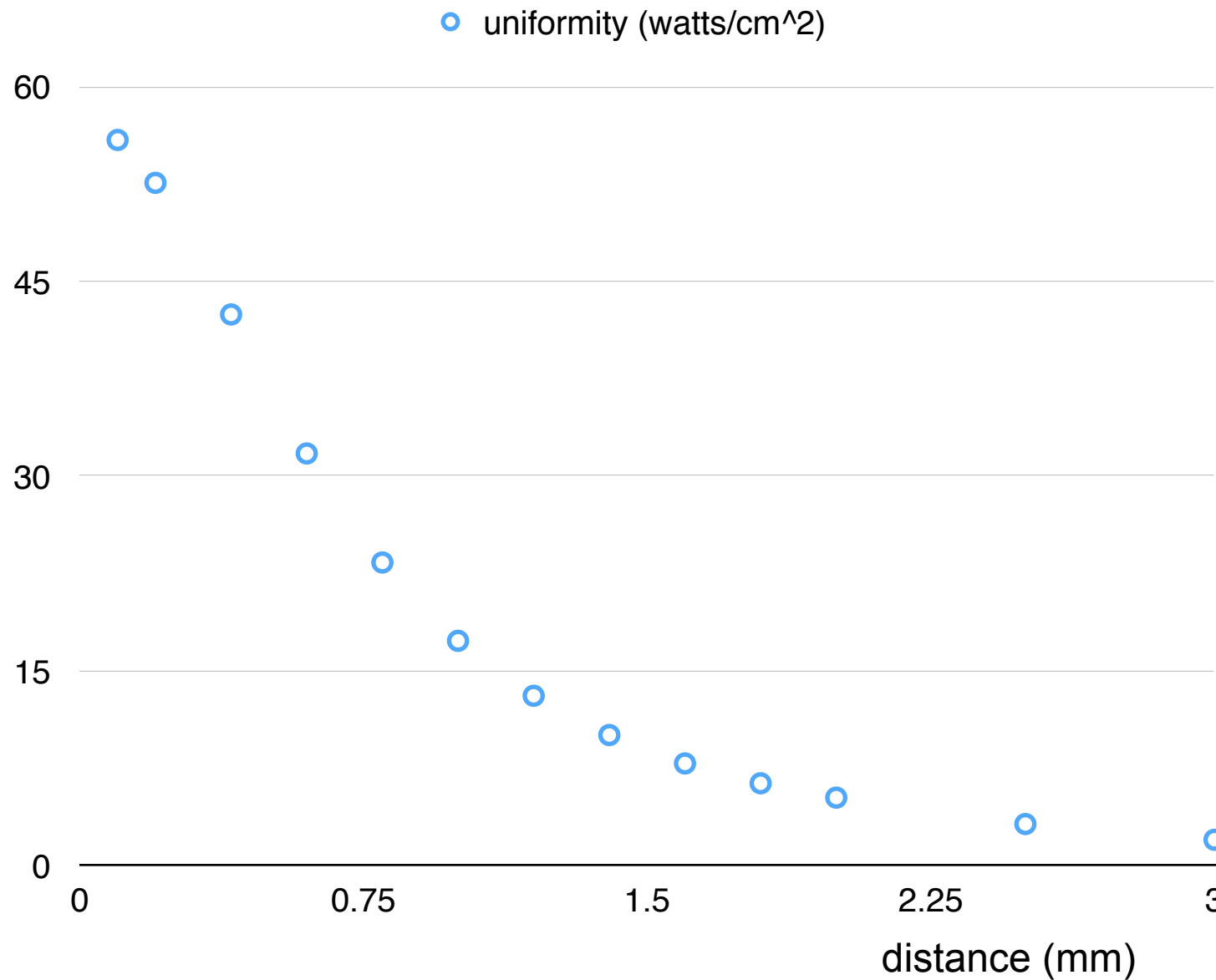
light distribution 0.1-3.0mm  
diagonal fibers

Achim Franz, BNL

fraction of light reaching the SiPM and min/max value versus distance  
for a black box with diagonal fibers

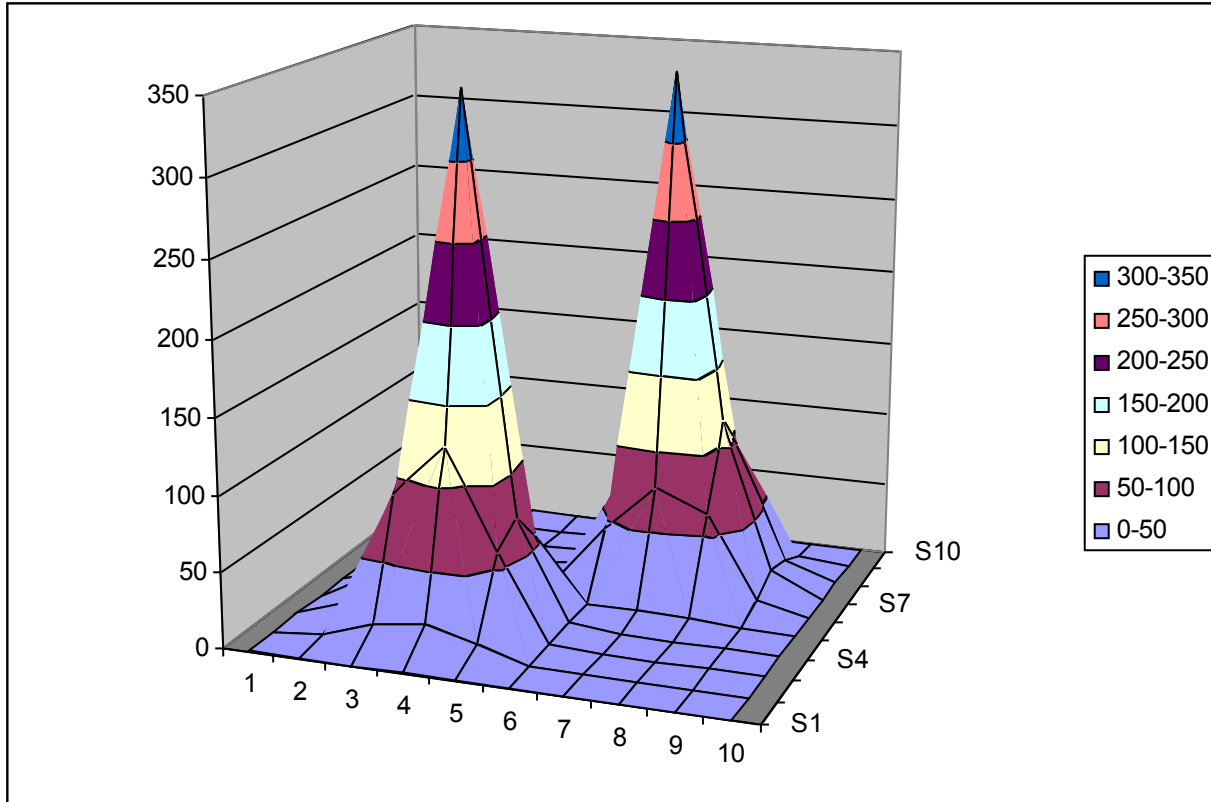


# uniformity of light reaching the SiPM for a black box with diagonal fibers



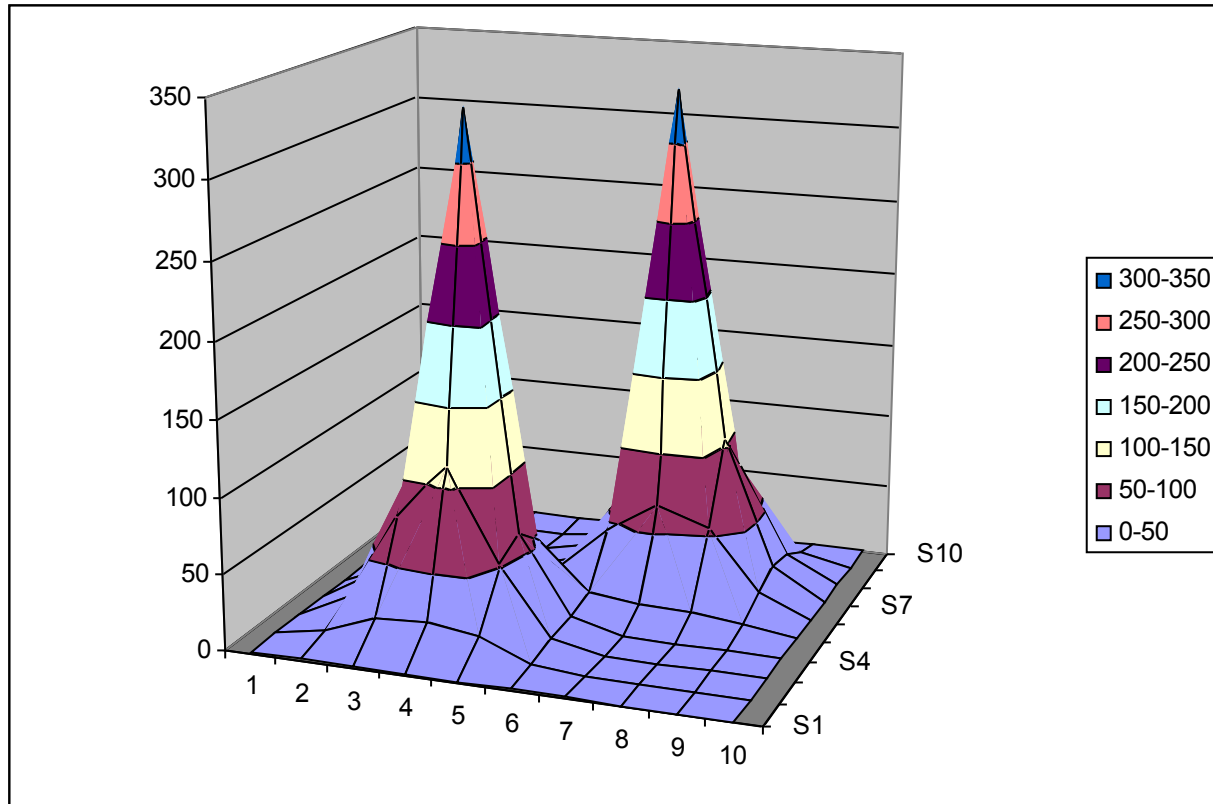
0.1mm

diagonal fibers



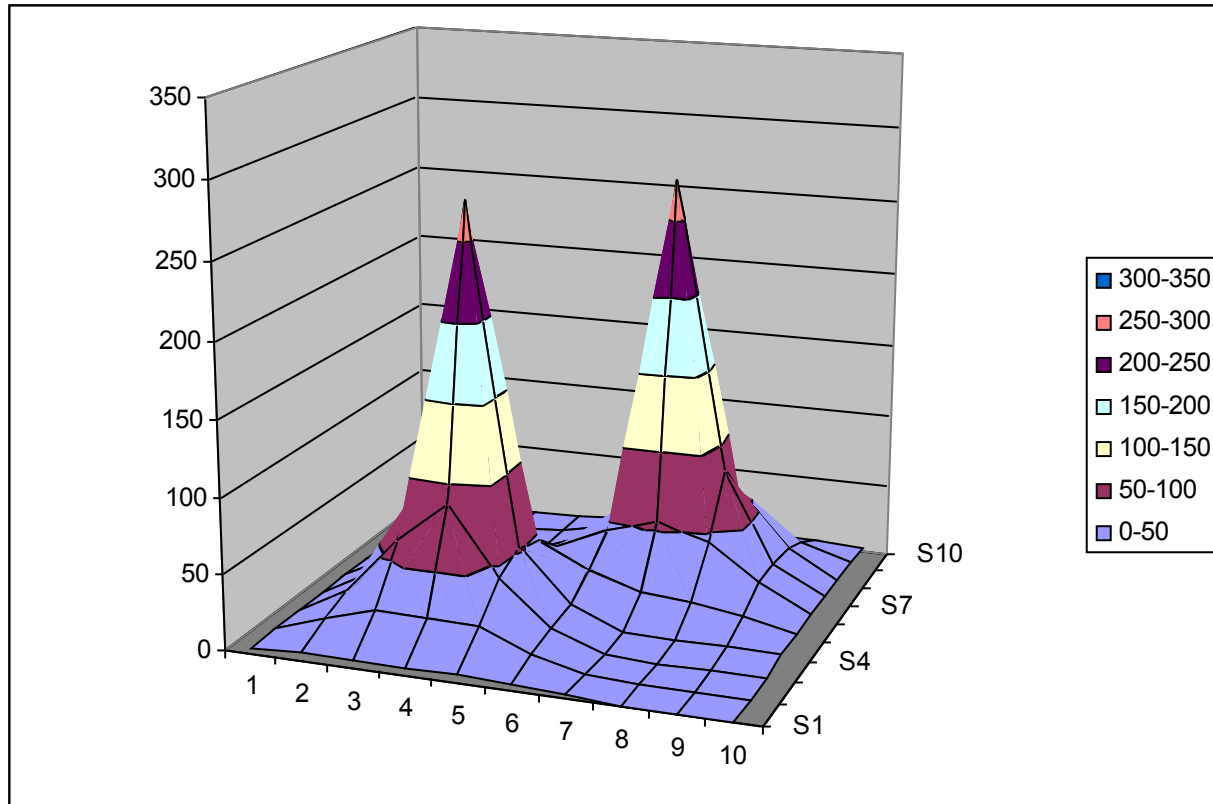
0.2mm

diagonal fibers



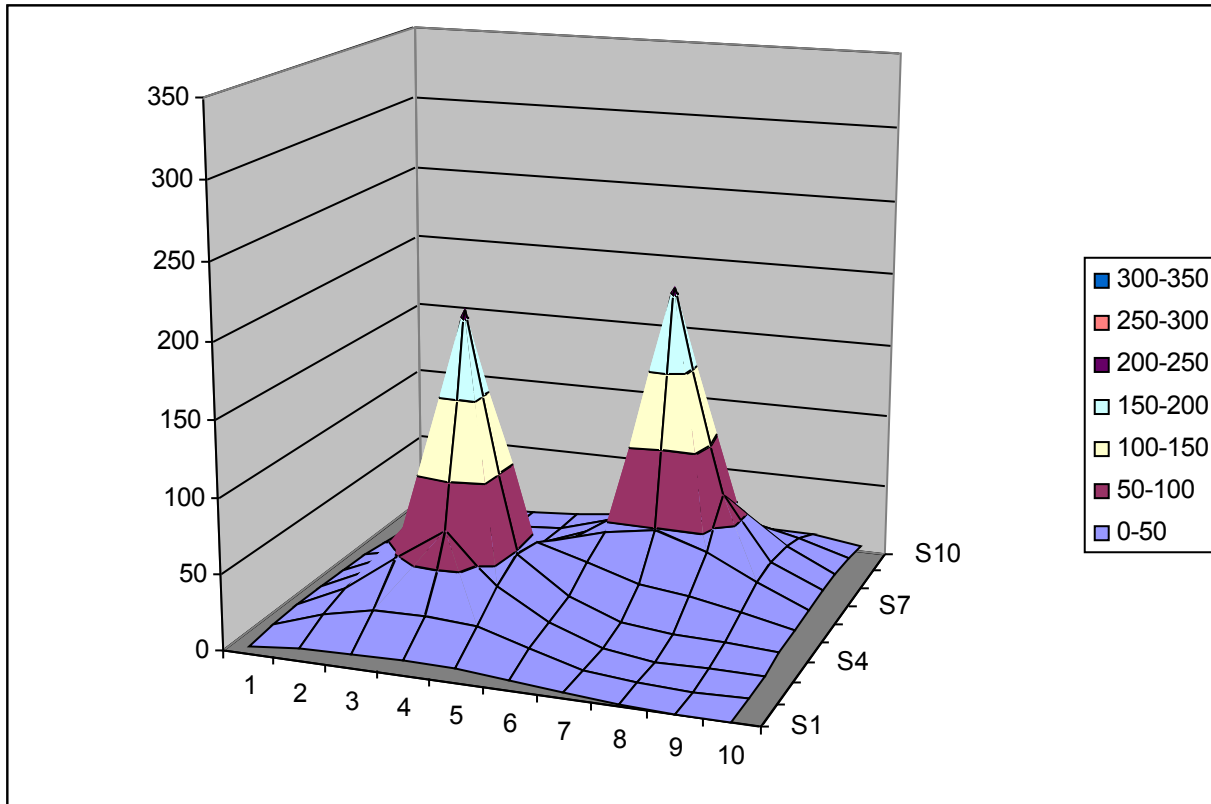
0.4mm

diagonal fibers



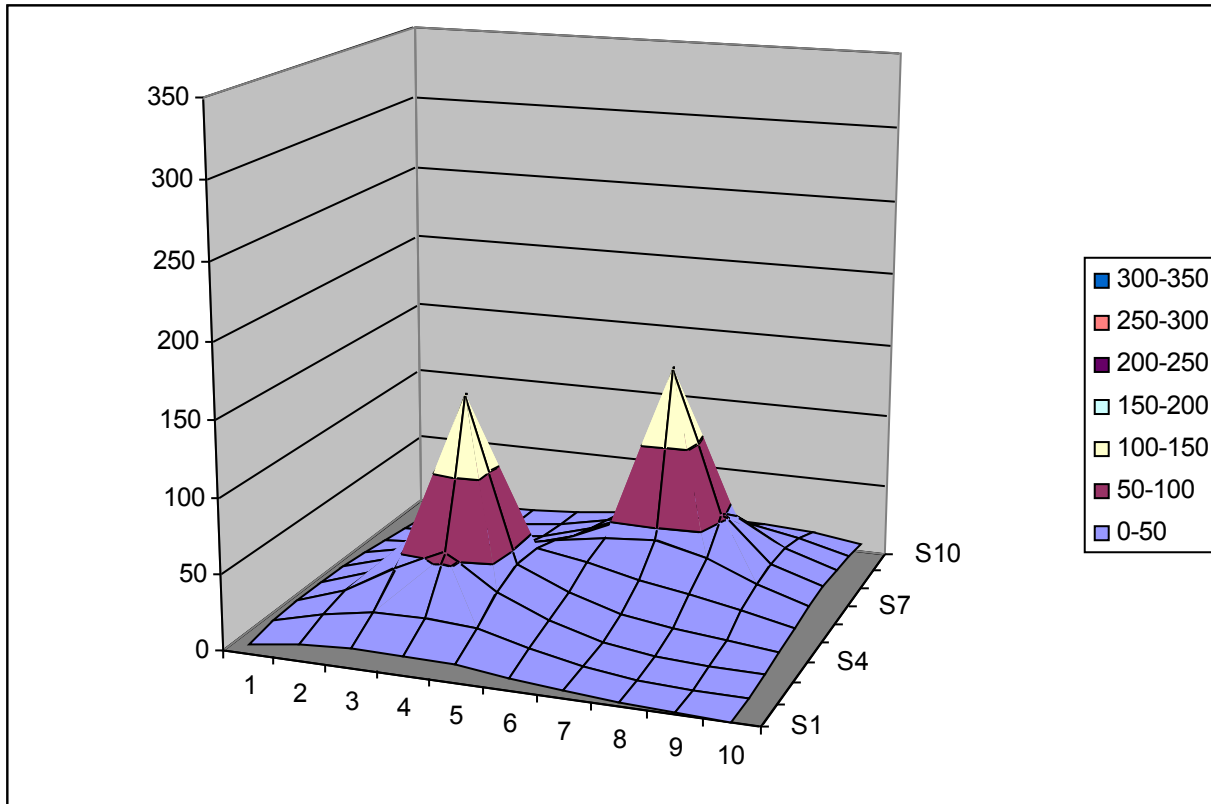
0.6mm

diagonal fibers



0.8mm

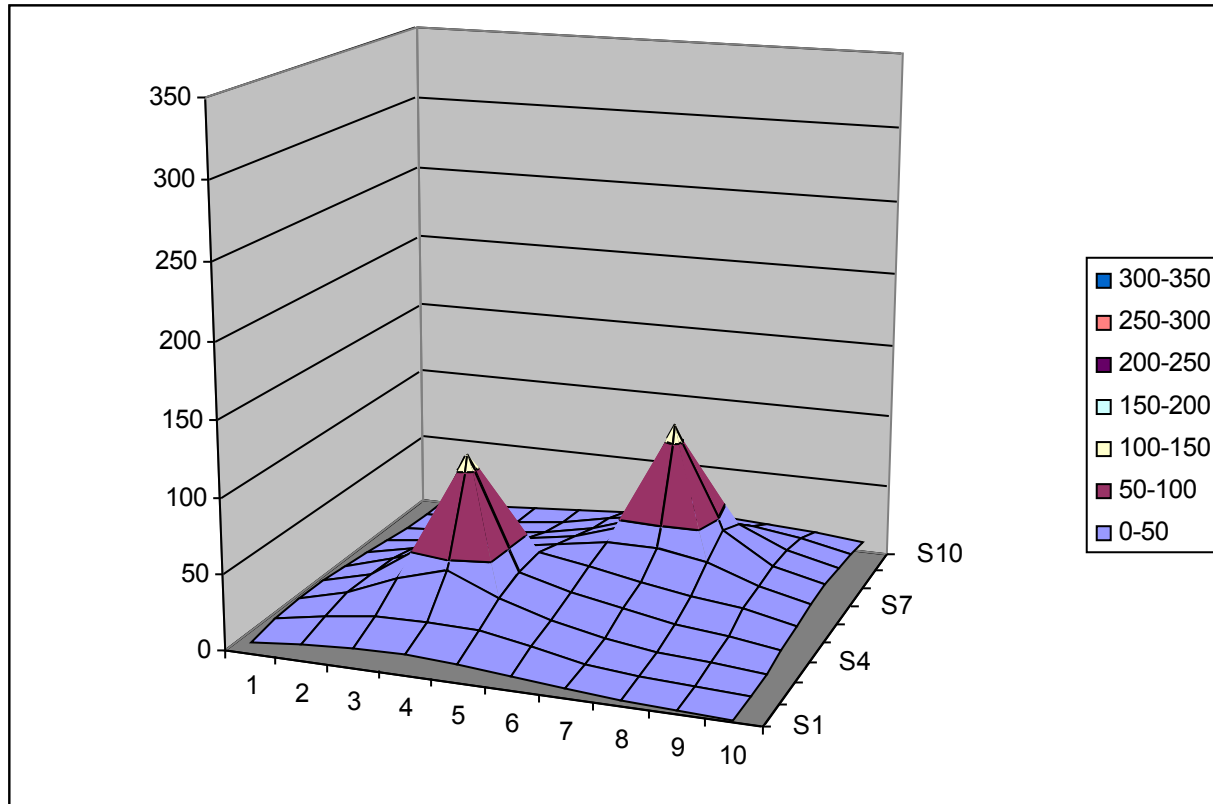
diagonal fibers





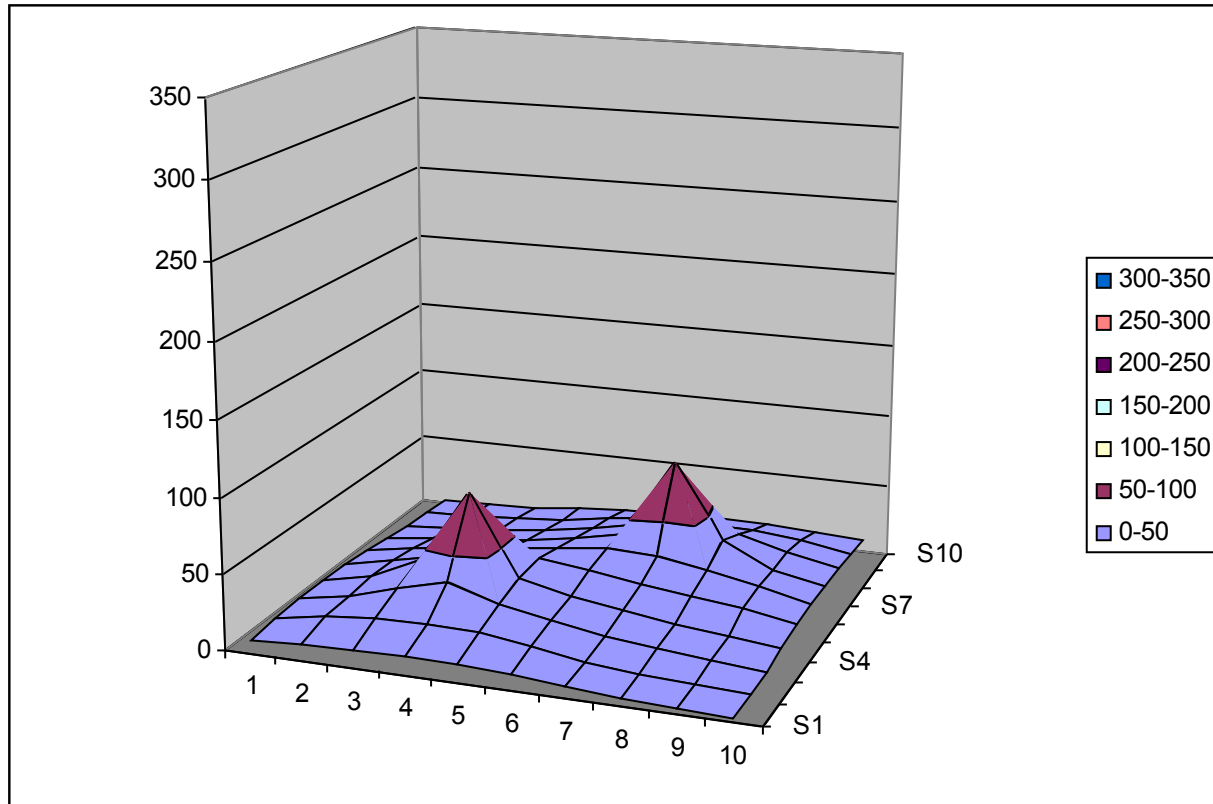
1.0mm

diagonal fibers



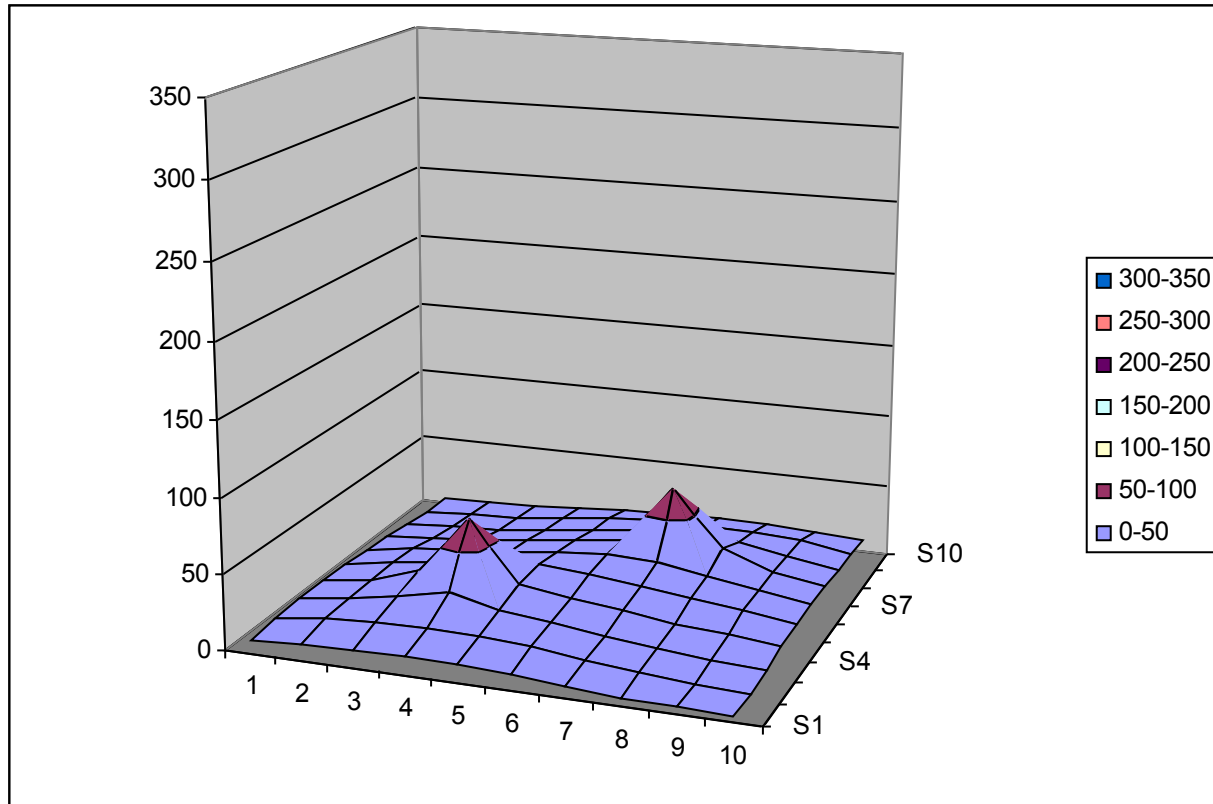
1.2mm

diagonal fibers



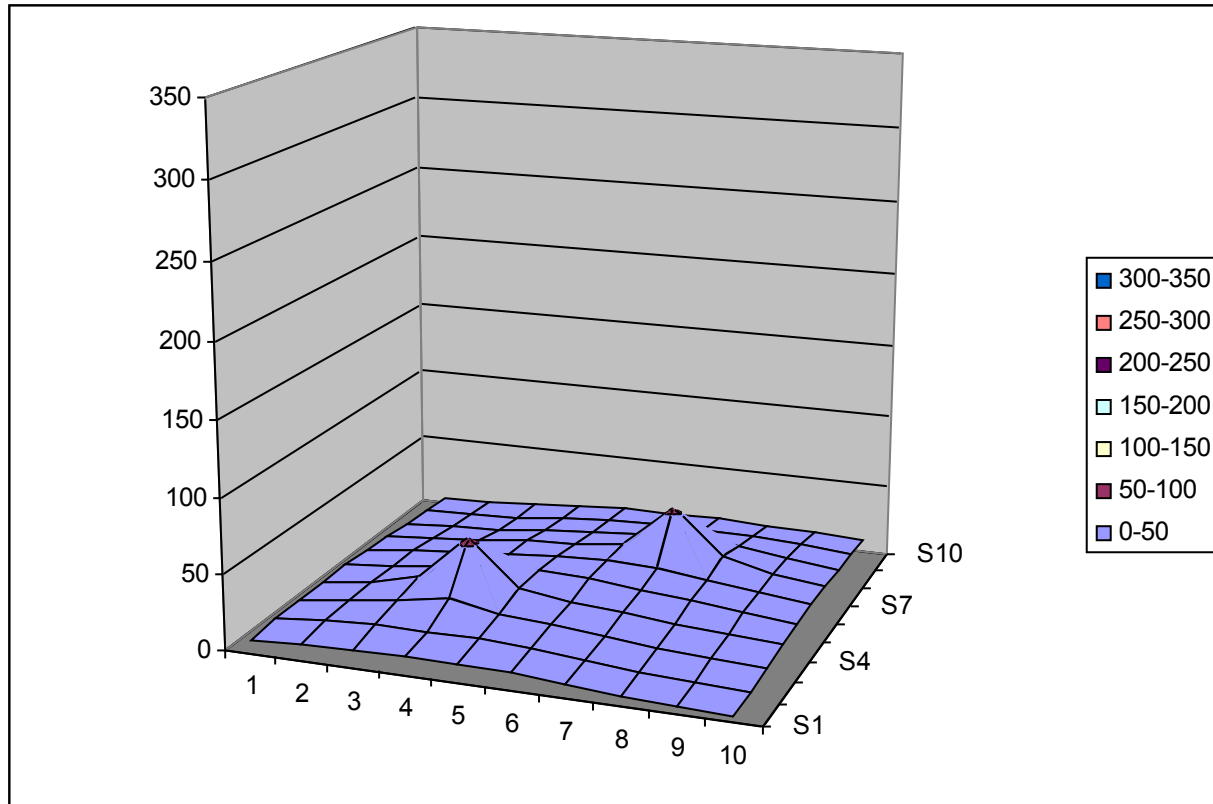
1.4mm

diagonal fibers



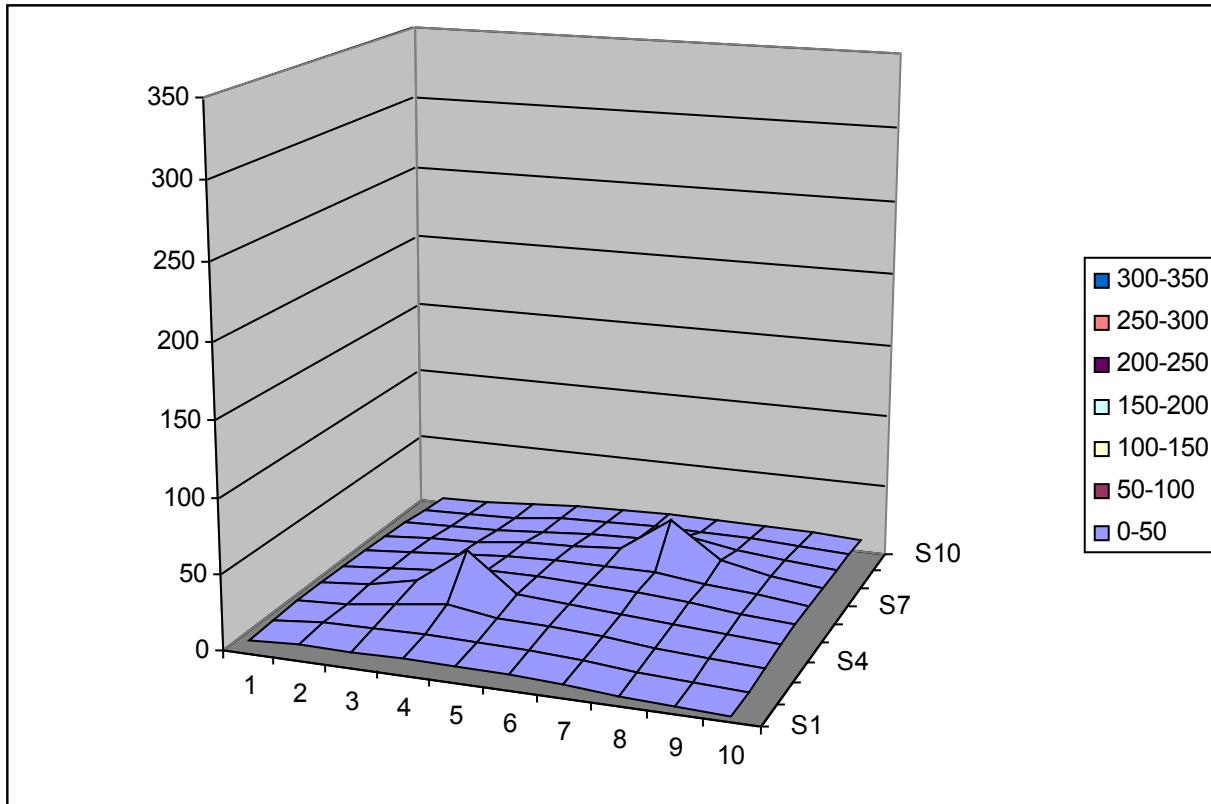
1.6mm

diagonal fibers



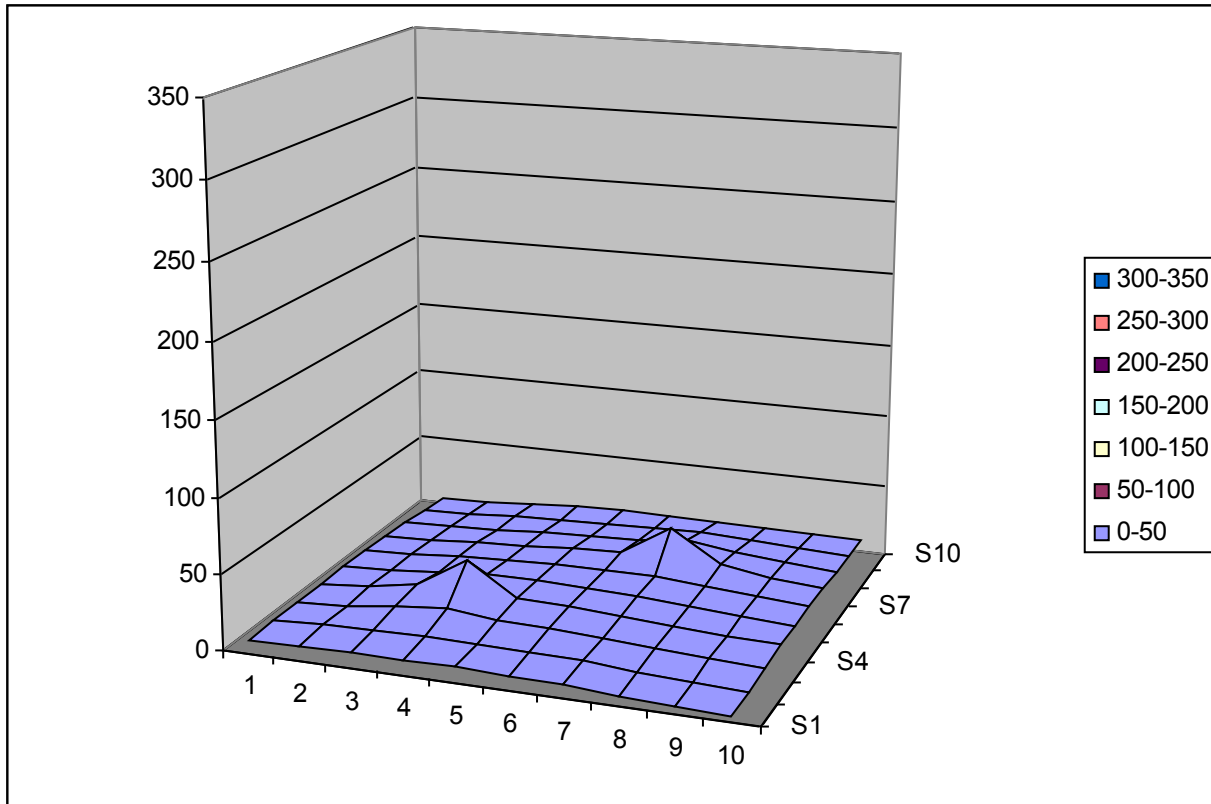
1.8mm

diagonal fibers



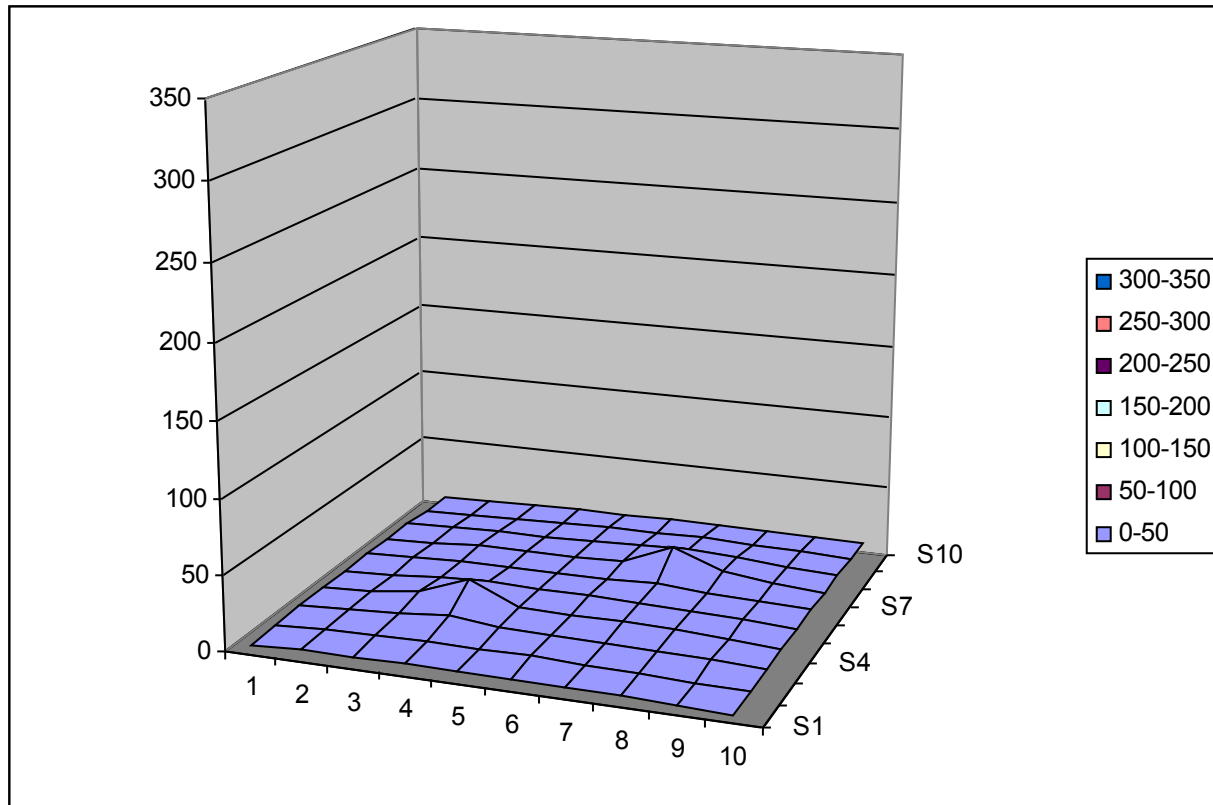
2.0mm

diagonal fibers



2.5mm

diagonal fibers



3.0mm

diagonal fibers

