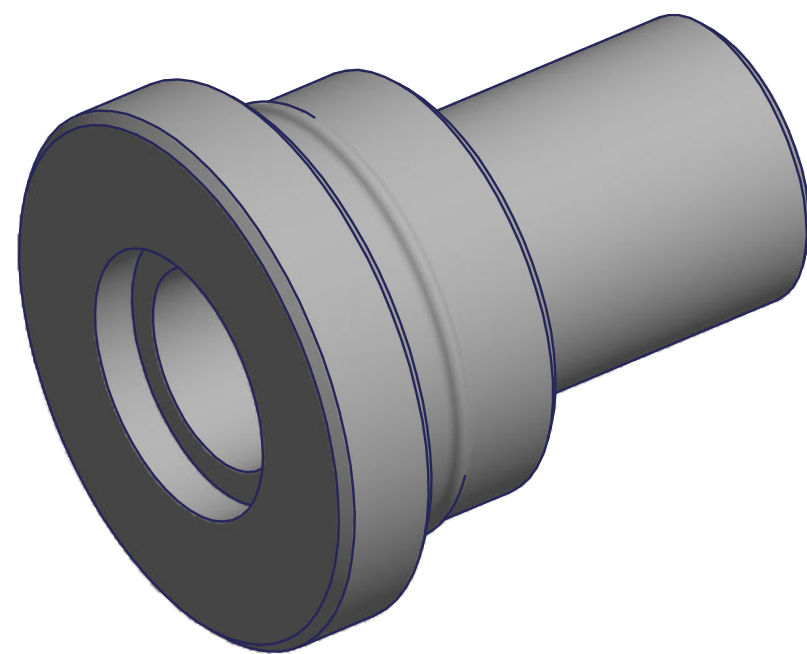
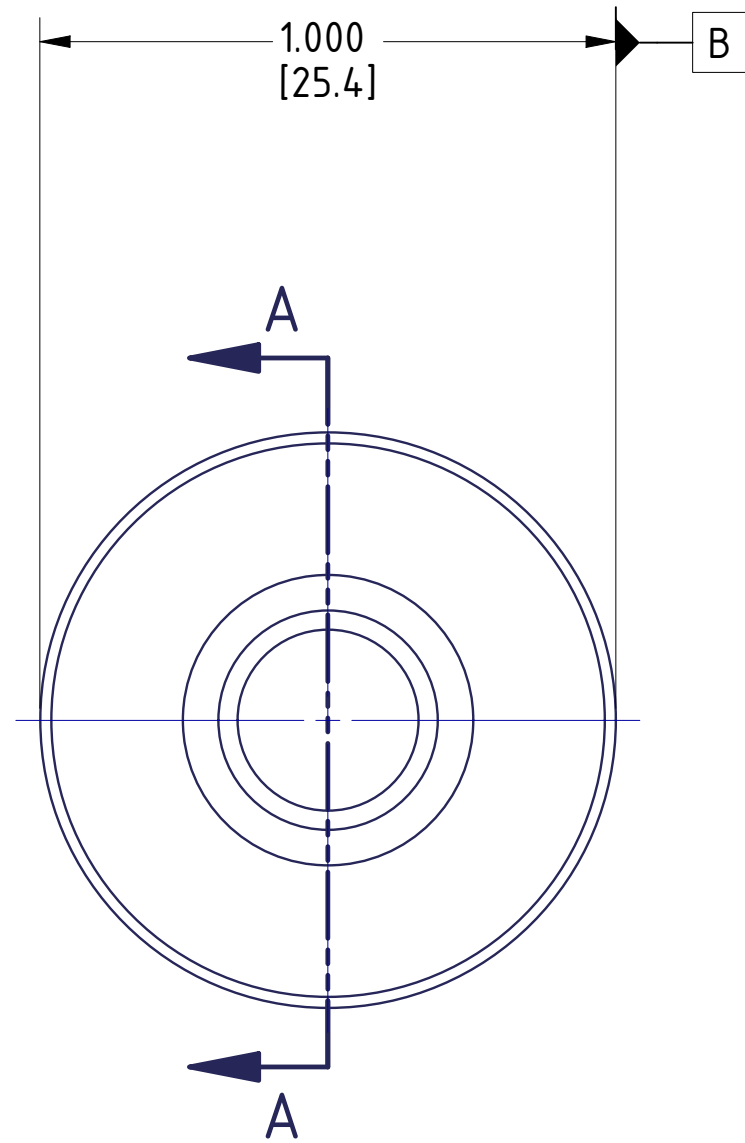


NOTES:

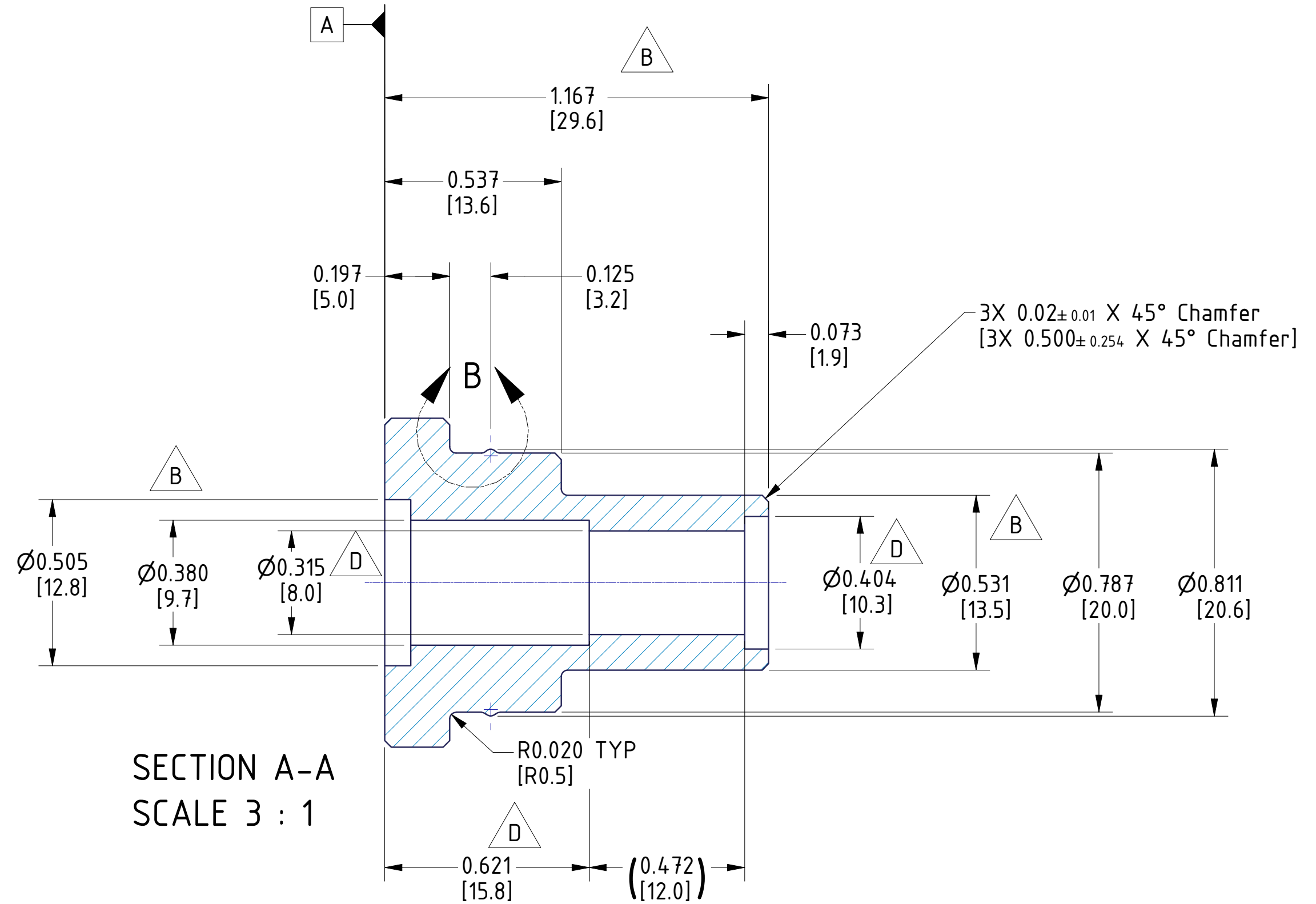
1. Material: WHITE ABS PLASTIC. C
2. ALL DIMENSIONS ARE IN in[mm].
3. DIMENSIONS & TOLERANCES IN BRACKETS ARE FOR REFERENCE ONLY.
4. UNTOLERANCED DIMENSIONS ARE BASIC 0.010 [0.25] A B
5. DRAWING MAY BE USED WITH MODEL "Fiber Plug REV D.stp"
VALUES QUERIED FROM 3-D DIGITAL DATA ARE BASIC.

REVISION HISTORY

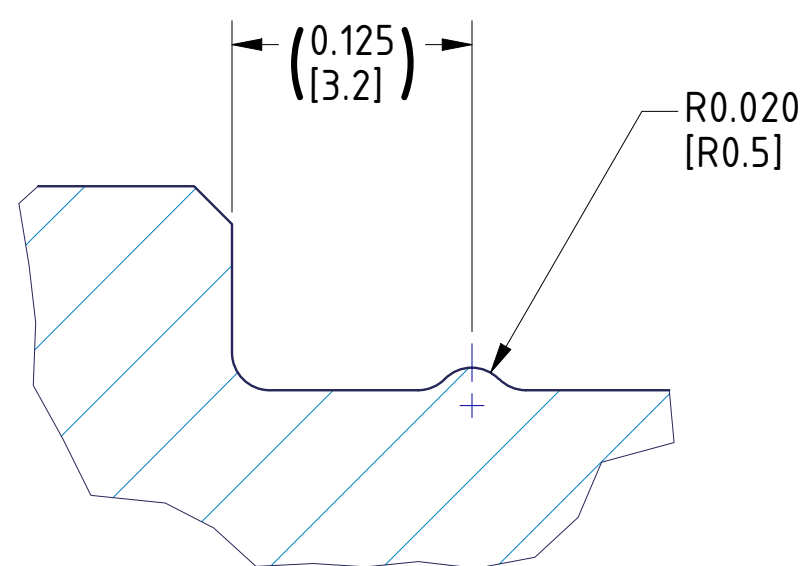
REV	ECN NUMBER	ZONE	DESCRIPTION	DATE	APPROVED
A			INITIAL RELEASE	6/15/2018	Ruggiero
B			ADDED EXTENSION LENSE HOLDER 0.380 WAS 0.224	9/26/2018	DL
C			CHANGED MATERIAL TO WHITE ABS	4/30/2019	J.L.
D		B-2	0.404 WAS 0.413 / ADDED STEP	8/2/2019	E.K.



3D-View



SECTION A-A
SCALE 3 : 1



DETAIL B
SCALE 10 : 1

CHECKING PRINT 8/2/2019

		BROOKHAVEN NATIONAL LABORATORY BROOKHAVEN SCIENCE ASSOCIATES UPTON, NY 11973	
THIRD ANGLE PROJECTION INTERPRET IN GENERAL ACCORDANCE WITH ASME Y14.5-2009 UNLESS OTHERWISE SPECIFIED. ALL DIMENSIONS ARE IN INCHES [mm] DECIMAL TOLERANCES X.X ± X.XX ± X.XXX ± ANGLES ±		PROJECT: HCAL DESCRIPTION: Fiber Plug	
DRAWN BY: R. RUGGIERO CHECKED BY: J. MILLS ENGINEER APPROVAL: SUPERVISOR APPROVAL: DESIGN APPROVAL: Q.A. APPROVAL:	6/30/2019 4/30/2019 1/1/2001 1/1/2001 1/1/2001	SIZE: C DRAWING NUMBER: 205-0150-0040 Q.A. CATEGORY:	REV: D SCALE: 3 : 1 WEIGHT: N/A SHEET: 1 OF 1
FINISH: <input checked="" type="checkbox"/> BREAK EDGES: MAX.: MIN.:		SAFETY ENGINEER:	

OUTSTANDING ECN NUMBERS