

Calo production update

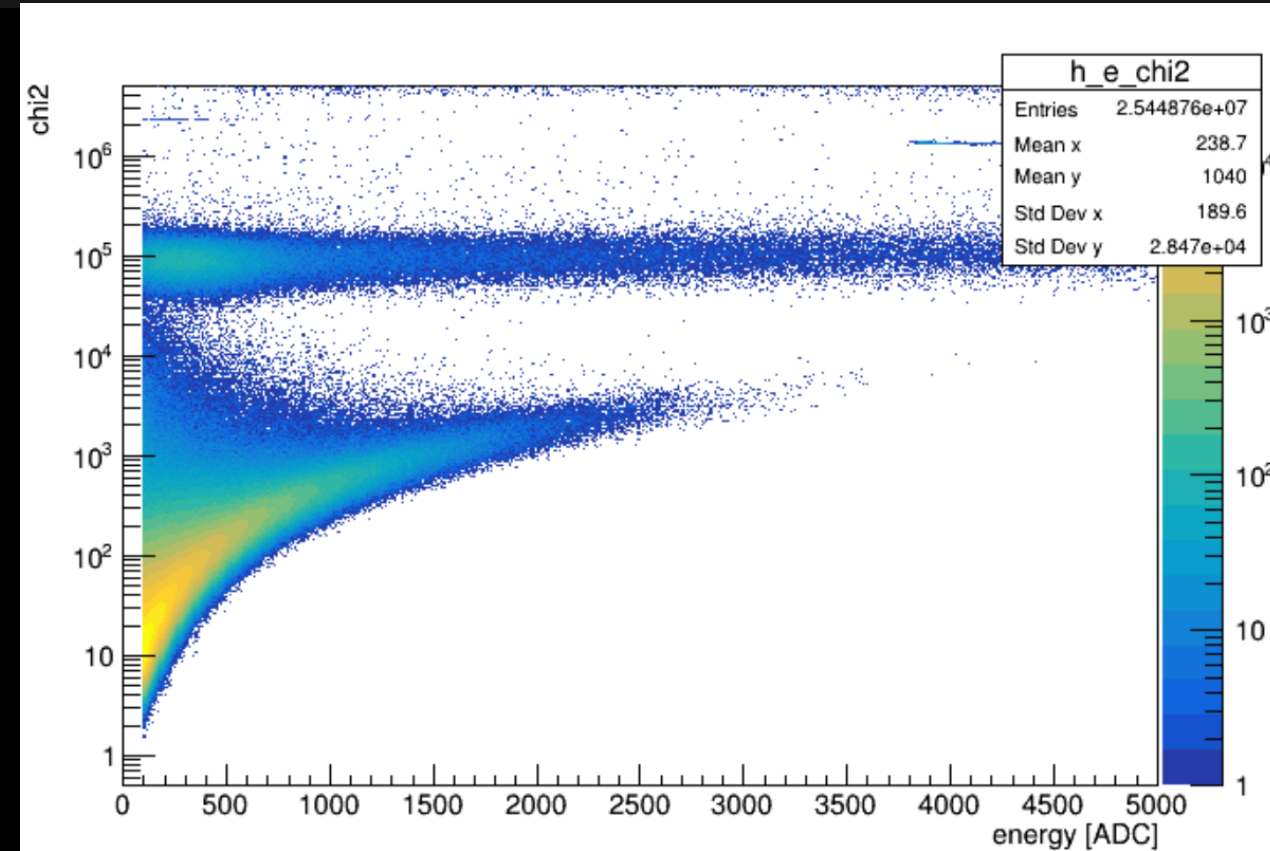
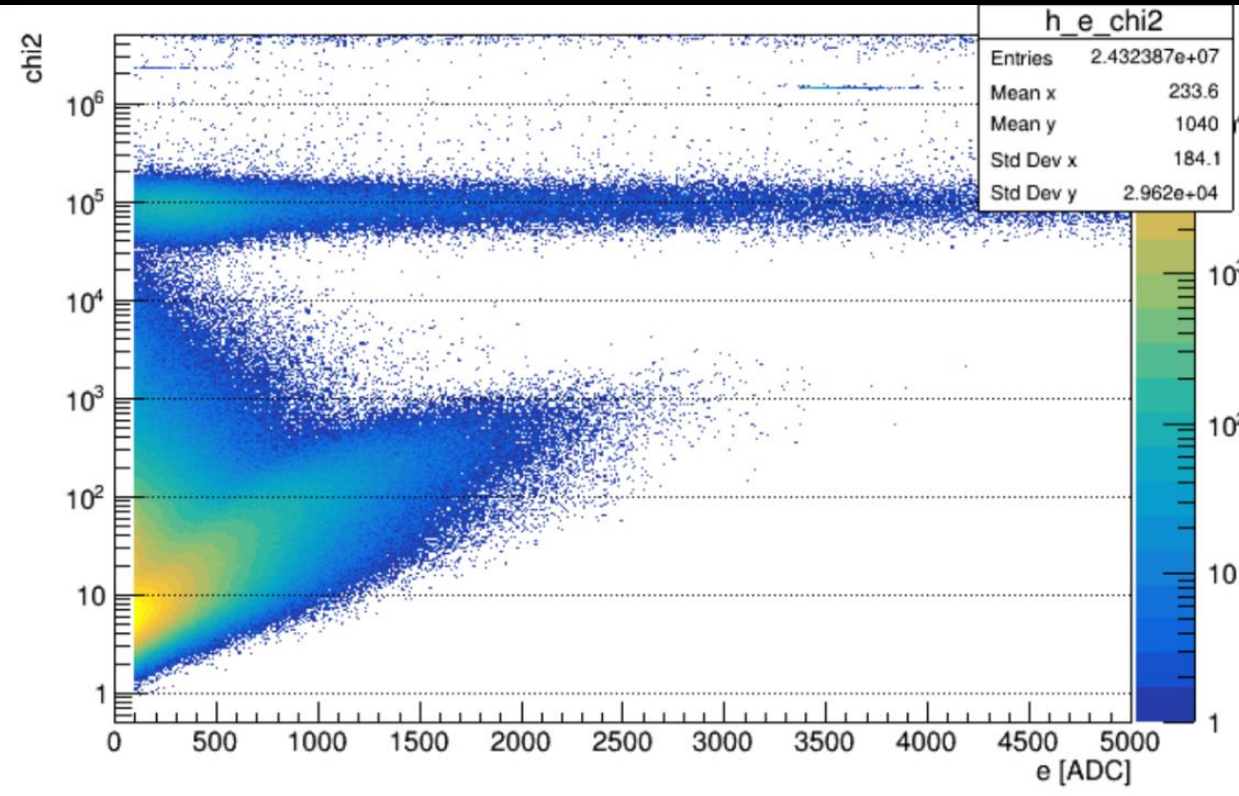
Blair Seidlitz
Columbia University

Calo Calibrations Mtg: Nov. 6th, 2023

- **I am requesting a new production, these are the changes that will be included in it.**
- **“repair” missing ieta=8 & 95 calibrations**
 - Issue in EMCal calibration where calibration factors are accidentally set to zero
 - We want to calibrate from roughly calibrated towers so we need to repair these calibration so we get some calibrated data out.
- **Added timing cuts (i.e. setting isBadTime status bit)**
- **Updating HCal waveform template to one derived with beam data (the previous was derived in test-beam data).**
- **Relaxing the isBadChi2 threshold to $> 1e4$ (it was $3e3$)**
- **Need to do something for hot clusters (for expediency this could be left up to analyzer for the upcoming pass)**

Outer Hcal chi2 vs energy

3



- **Left: Chi2 vs. ADC with new beam template.**
- **Right: same distribution but with old test-beam template**
- **Details for those not following closely**
 - Chi2 is a least squares /ndf
 - Distribution at 1e6 are improperly configured towers with unphysical waveforms.

Timing cuts

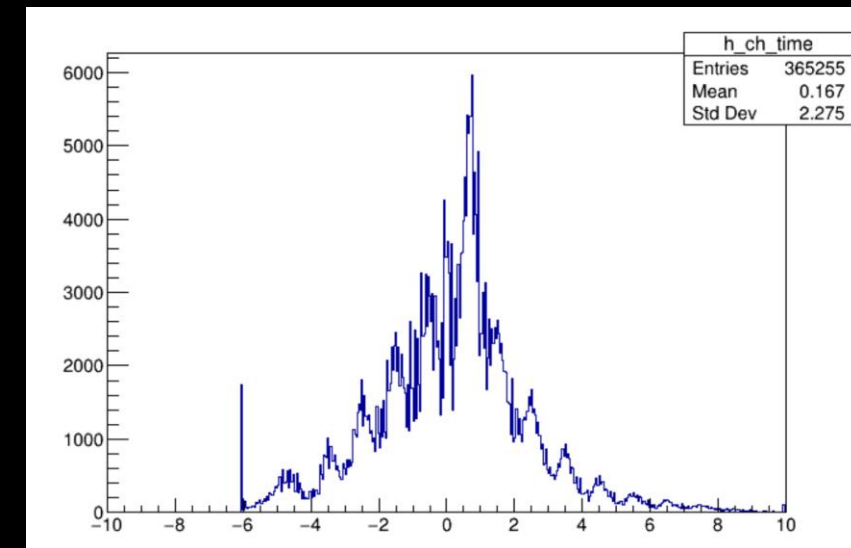
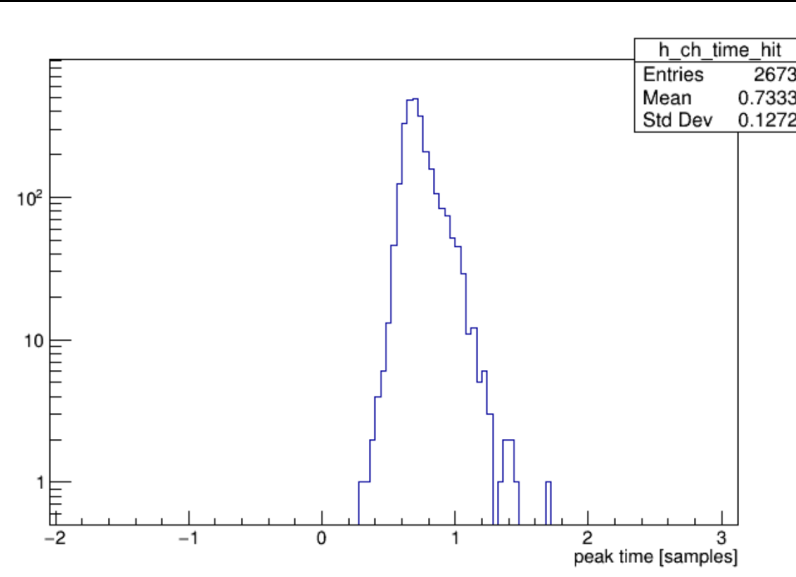
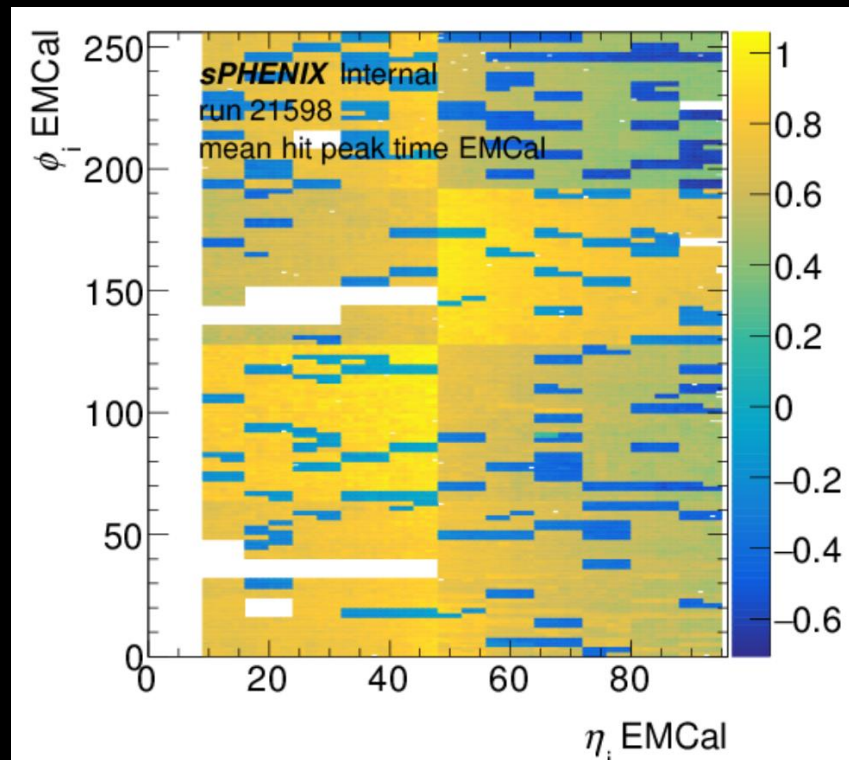
➤ Left mean time for hit (> 0.5 GeV)

- If plotted in 1D it looks like two gaussians centered around 0.8 and -0.2
- There is effect of a rounding error when detector is timed in due to disagreement of FPGA time and GTM (experts can confirm)

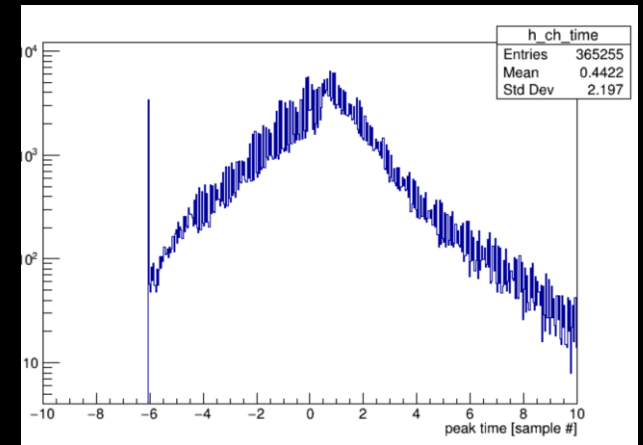
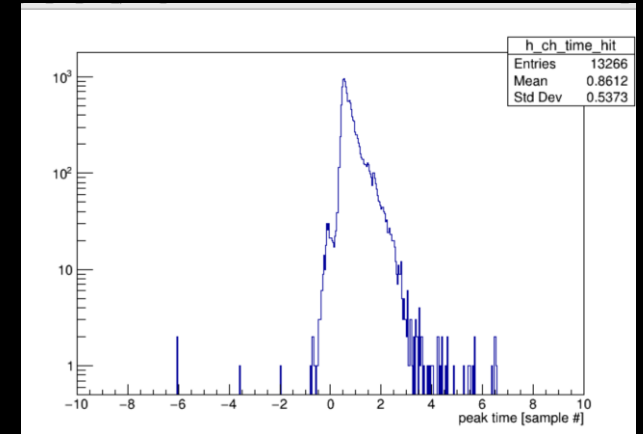
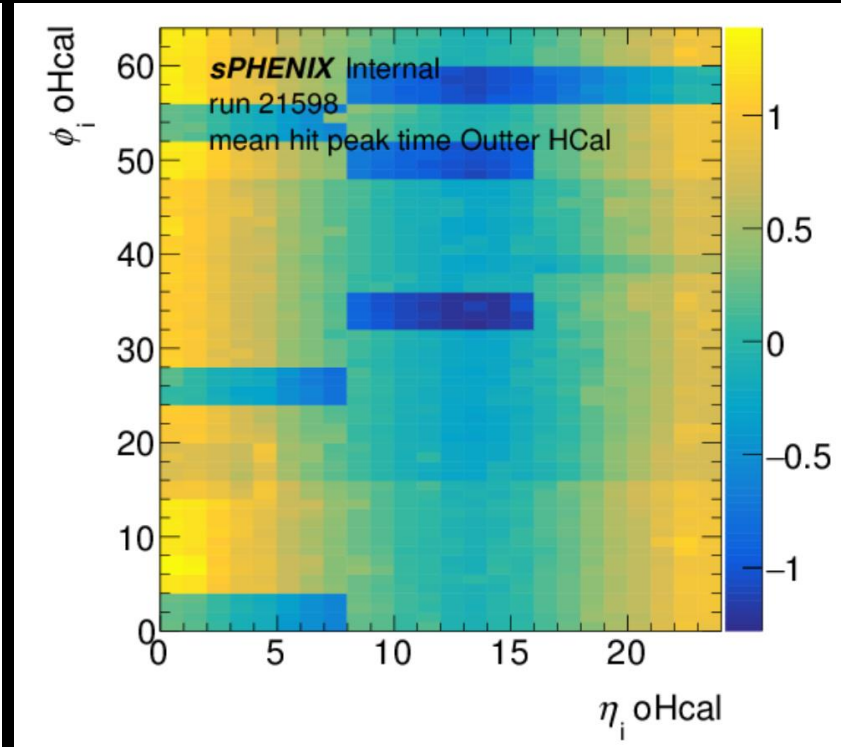
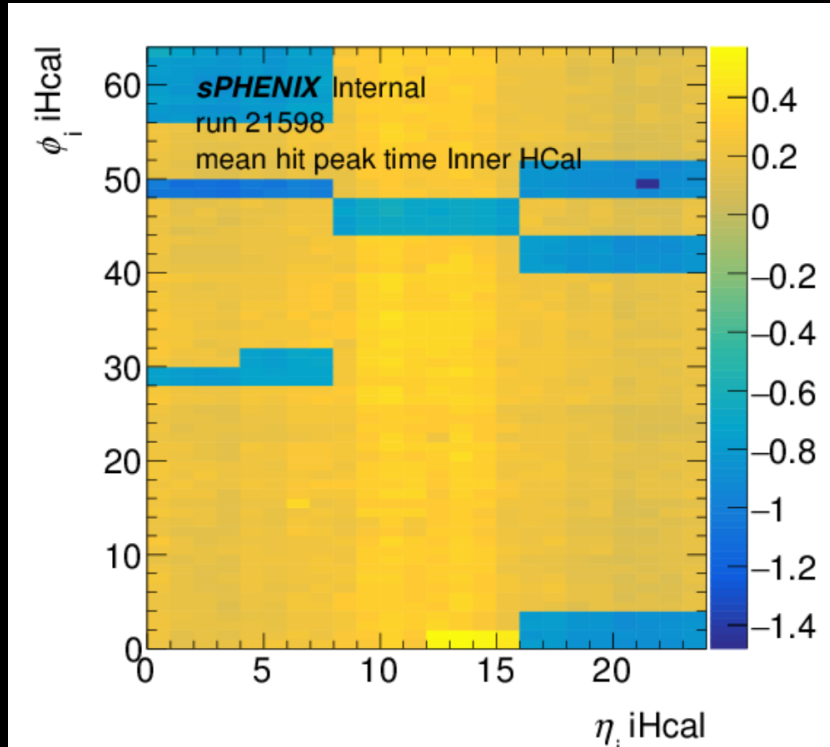
➤ Middle: single channel ($i\eta=20$ $i\phi=62$) timing distribution for hists

➤ Right: same channel for all events

➤ Need to look into default value (ie.e. what is returned when bin is empty)



HCal timing



- Outer Hcal has significant differences in signal cable length leading to peak time change as a function of eta – much smaller effect in iHCal and EMCal
- Right figures: single OHCAL channel ($\eta=20$ $\phi=62$) timing distribution for hits (top, ADC > 200) and all events (bottom).
 - Timing distribution for a single channel seems wider for outer hcal

Thanks!