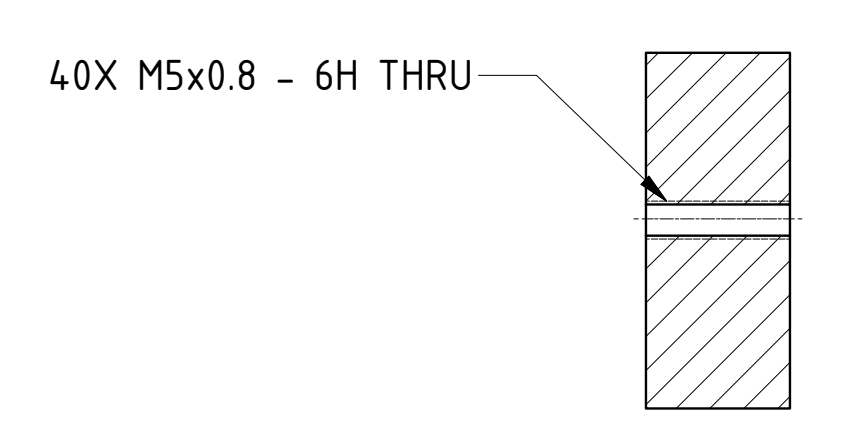
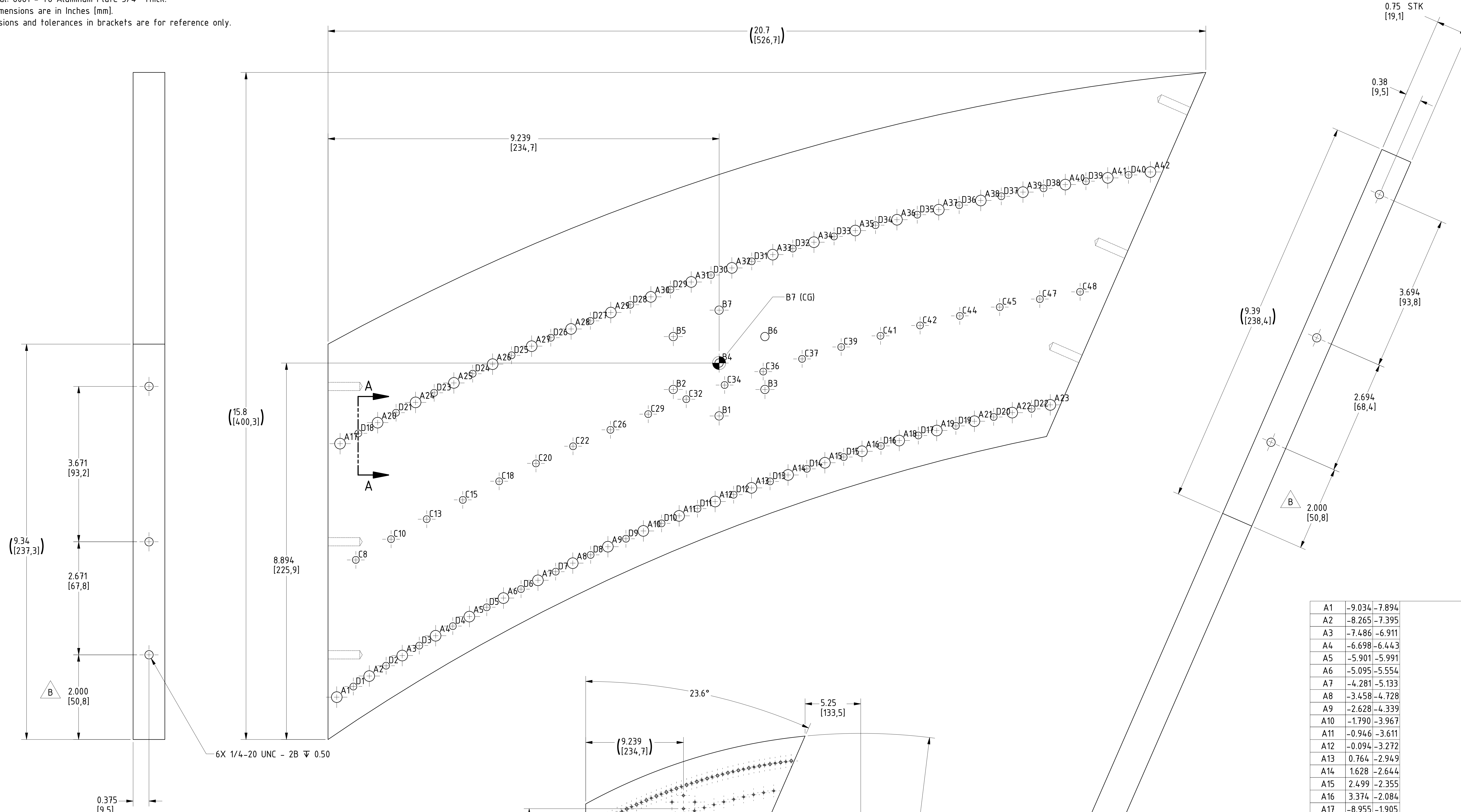


REV	DESCRIPTION	DATE	APPROVED
A	INITIAL RELEASE	6/11/2015	
B	2.00 WAS 1.00	6/11/2015	
C	MADE M5 HOLE THRU	7/2/2015	

- Notes:
1. Material: 6061 - T6 Aluminum Plate 3/4" Thick.
 2. All Dimensions are in Inches [mm].
 3. Dimensions and tolerances in brackets are for reference only.



SECTION A-A
SCALE 1 : 1
Typical M5 Thread Detail
(Thru Thread Acceptable)

A1	-9.034	-7.894	D1	-8.642	-7.643
A2	-8.265	-7.395	D2	-7.868	-7.152
A3	-7.486	-6.911	D3	-7.085	-6.676
A4	-6.698	-6.443	D4	-6.292	-6.216
A5	-5.901	-5.991	D5	-5.490	-5.771
A6	-5.095	-5.554	D6	-4.680	-5.342
A7	-4.281	-5.133	D7	-3.862	-4.929
A8	-3.458	-4.728	D8	-3.036	-4.533
A9	-2.628	-4.339	D9	-2.202	-4.152
A10	-1.790	-3.967	D10	-1.360	-3.788
A11	-0.946	-3.611	D11	-0.512	-3.441
A12	-0.094	-3.272	D12	0.343	-3.110
A13	0.764	-2.949	D13	1.204	-2.797
A14	1.628	-2.644	D14	2.071	-2.500
A15	2.499	-2.355	D15	2.944	-2.220
A16	3.374	-2.084	D16	3.822	-1.958
A17	-8.955	-1.905	D17	4.705	-1.712
A18	4.255	-1.830	D18	-8.524	-1.661
A19	5.141	-1.593	D19	5.593	-1.485
A20	-8.068	-1.409	D20	6.485	-1.274
A21	6.031	-1.374	D21	-7.633	-1.173
A22	6.925	-1.172	D22	7.381	-1.081
A23	7.823	-0.988	D23	-6.732	-0.703
A24	-7.172	-0.930	D24	-5.822	-0.251
A25	-6.266	-0.469	D25	-4.904	0.183
A26	-5.352	-0.026	D26	-3.977	0.599
A27	-4.429	0.399	D27	-3.042	0.997
A28	-3.498	0.806	D28	-2.100	1.376
A29	-2.559	1.194	D29	-1.150	1.737
A30	-1.613	1.564	D30	-0.193	2.079
A31	-0.660	1.915	D31	0.770	2.403
A32	0.300	2.248	D32	1.739	2.707
A33	1.267	2.561	D33	2.715	2.992
A34	2.239	2.856	D34	3.695	3.258
A35	3.217	3.131	D35	4.681	3.505
A36	4.200	3.387	D36	5.671	3.732
A37	5.189	3.624	D37	6.666	3.940
A38	6.181	3.841	D38	7.664	4.128
A39	7.178	4.039	D39	8.666	4.297
A40	8.178	4.217	D40	9.671	4.446
A41	9.181	4.376	C8	-8.583	-4.652
A42	10.188	4.515	C10	-7.750	-4.162
B1	0.000	-1.250	C13	-6.908	-3.689
B2	-1.083	-0.625	C15	-6.057	-3.233
B3	1.083	-0.625	C18	-5.197	-2.794
B4	0.000	0.000	C20	-4.328	-2.371
B5	-1.083	0.625	C22	-3.452	-1.966
B6	1.083	0.625	C26	-2.567	-1.578
B7	0.000	1.250	C29	-1.675	-1.207
			C32	-0.776	-0.854
			C34	0.129	-0.519
			C36	1.041	-0.201
			C37	1.960	0.098
			C39	2.884	0.380
			C41	3.813	0.643
			C42	4.747	0.888
			C44	5.686	1.114
			C45	6.629	1.322
			C47	7.576	1.512
			C48	8.527	1.683

BROOKHAVEN NATIONAL LABORATORY
Upton, NY 11973

PHENIX
sPHENIX
Inner HCAL End Plate

SP02-200-061

REV: A3 SCALE: 1:1 SHEET: 23 OF 23