

REVISION

0	CW	J LAMBERT
5/31/2021	ECN-411999	
ISSUE FOR REVIEW.		
1	CW	J LAMBERT
6/8/2021	ECN-412607	
RELEASE FOR LIMITED PRODUCTION; ROTATE J2 END; SHT 2 - SUB-HDR-223041-01 BOM: CHG ITEM 2 FROM PCB-XXXXX-HDR-01 TO PCB-111664-HDR-01; TABLE 2: CHG J1 FROM B1 ... B19 TO A19 ... A1, A1 ... A19 TO B19 ... B1, ADD "UCC8 PAD 03 CONNECTED TO GND, ALL OTHERS UCC8 PADS ARE NO CONNECT".		

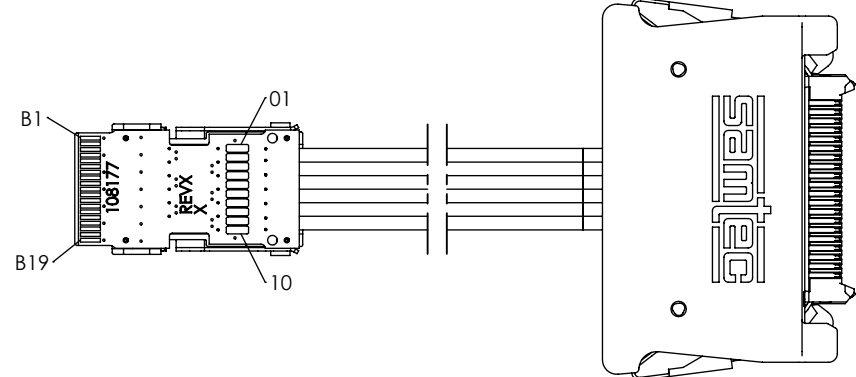
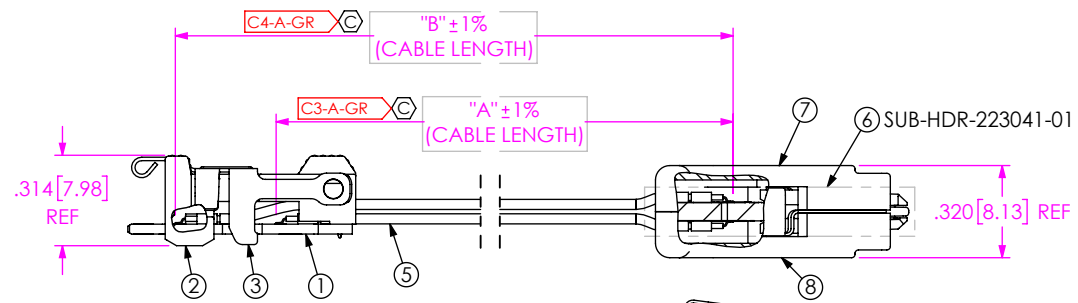
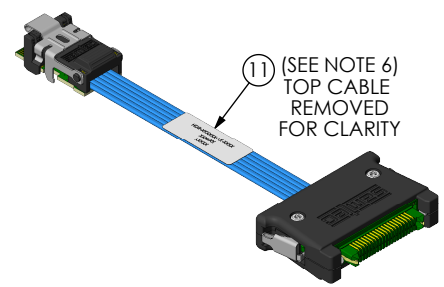
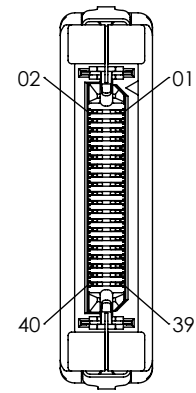
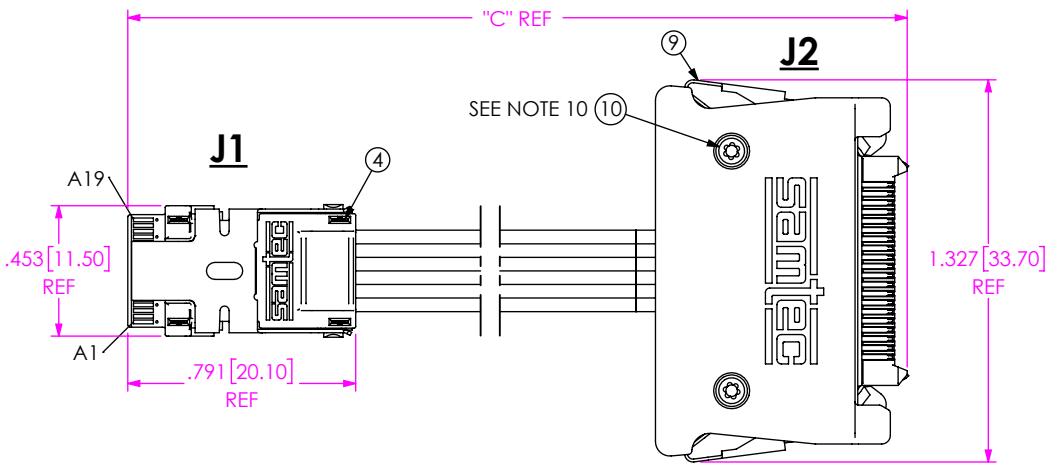
RELEASED FOR LIMITED PRODUCTION

USE FOR QUOTING, PRELIMINARY DESIGN, INITIAL BUILDS AND INFORMATIONAL PURPOSES ONLY

ACCEPTANCE OF DRAWING ACCEPTED WITH DEVIATIONS LISTED

DATE: _____
 COMPANY: _____
 CUSTOMER SIGNATURE: _____
 PRINTED NAME: _____
 PHONE NO: _____
 FAX NO: _____

THIS PRODUCT MANUFACTURED WITH LEAD-FREE PROCESSING



PART #	"A"	"B"	"C"
HDR-223041-01-ECUE	19.69 [500.0]	20.04 [508.9]	20.81 [528.4]
HDR-223041-02-ECUE	39.37 [1,000.0]	39.72 [1,008.9]	40.49 [1,028.4]

- NOTES:
- ECUE TO ERDP WITH CUSTOM PCB FOR 36100 TWINAX IS NOT STANDARD.
 - ⊗ REPRESENTS A CRITICAL DIMENSION.
 - PARTS TO BE PROCESSED PER SAMTEC WORKMANSHIP GUIDELINES.
 - ALL ASSEMBLIES TO BE 100% ELECTRICALLY TESTED.
 - ALL ASSEMBLIES TO BE 100% HI-POT TESTED AT 300V.
 - ITEM 11 TO BE CENTERED ON ITEM 5 AS SHOWN. ITEM 11 TO CONTAIN:
 LINE 1 - PART NUMBER "HDR-XXXXXX-XX-XXXX"
 LINE 2 - SHOP ORDER NUMBER "XXXXXX"
 LINE 3 - DATE CODE "XXXXXX".
 - FOR SUB-ASSEMBLY AND FINISHED GOOD PACKAGING REQUIREMENTS, REFERENCE SAMTEC PACKAGING MANUAL.
 - REFER TO PREP-SPEC.PDF FOR CABLE PREP DIMENSIONS. ASSEMBLY USES HIGH SPEED PCB PREP.
 - TIGHTEN FASTENERS TO 1.4-1.7 IN-LBS (2 PLCS)
 - SCREW HEAD (ITEM 10) ORIENTATION ACCEPTABLE FACING UP OR DOWN.

C1-D-ET ⊗
 C2-D-ET ⊗

ITEM NO.	PART NUMBER	DESCRIPTION	QTY	MATERIAL
1	PCB-108177-ECUE-02	PCB	1	SUB ASSEMBLY
2	ECUE-12-2	HOUSING	1	VECTRA E130I, COLOR: BLACK
3	LTC-43-01	LATCH	1	STAINLESS STEEL 301 1/2 HARD
4	WT-101-01-T	WELD TAB	4	C7025 TM03
5	SUB-TTF-36100-06-01-XX-XX	TWINAX	2	SUB ASSEMBLY
6	SUB-HDR-223041-01	SUB ASSEMBLY	1	SUB ASSEMBLY
7	ERH-20-03-T	HOUSING	1	IDEMITSU XAREC EA 522 BK, COLOR: BLACK
8	ERH-20-03-B	HOUSING	1	IDEMITSU XAREC EA 522 BK, COLOR: BLACK
9	LTC-16-01	LATCH	2	STAINLESS STEEL
10	STS-04	FASTENER	2	LOW CARBON STEEL
11	HDRL-11	LABEL	1	SELF LAMINATING VINYL

TOLERANCES DO NOT APPLY TO REFERENCE DIMENSIONS. UNLESS OTHERWISE SPECIFIED, DIMENSIONS ARE IN INCHES.
 TOLERANCES ARE:
 DECIMALS .XX: ±0.1 [3]
 .XXX: ±0.05 [13]
 .XXXX: ±0.020 [051]

PROPRIETARY NOTE
 THIS DOCUMENT CONTAINS CONFIDENTIAL AND PROPRIETARY INFORMATION AND ALL DESIGN, MANUFACTURING, REPRODUCTION, USE, PATENT RIGHTS AND SALES RIGHTS ARE EXPRESSLY RESERVED BY SAMTEC, INC. THIS DOCUMENT SHALL NOT BE DISCLOSED, IN WHOLE OR PART, TO ANY UNAUTHORIZED PERSON OR ENTITY NOR REPRODUCED, TRANSFERRED OR INCORPORATED IN ANY OTHER PROJECT IN ANY MANNER WITHOUT THE EXPRESS WRITTEN CONSENT OF SAMTEC, INC.

520 PARK EAST BLVD, NEW ALBANY, IN 47150
 PHONE: 812-944-6733 FAX: 812-948-5047
 e-Mail: info@SAMTEC.com code 5332

1

TABLE 2					
SIGNAL MAPPING					
J1	TYPE	J2	J1	TYPE	J2
A19	GND	2	B19	GND	1
A18	SIG	4	B18	SIG	3
A17	SIG	6	B17	SIG	5
A16	GND	8	B16	GND	7
A15	SIG	10	B15	SIG	9
A14	SIG	12	B14	SIG	11
A13	GND	14	B13	GND	13
A12	SIG	16	B12	SIG	15
A11	SIG	18	B11	SIG	17
A10	GND	20	B10	GND	19
A9	SIG	22	B9	SIG	21
A8	SIG	24	B8	SIG	23
A7	GND	26	B7	GND	25
A6	SIG	28	B6	SIG	27
A5	SIG	30	B5	SIG	29
A4	GND	32	B4	GND	31
A3	SIG	34	B3	SIG	33
A2	SIG	36	B2	SIG	35
A1	GND	38	B1	GND	37
-	NC	40	-	NC	39

ALL GROUNDS COMMON AND TIED TO CABLE SHIELDS AND ERM8 LATCHES

UCC8 PAD 03 CONNECTED TO GND, ALL OTHER UCC8 PADS ARE NO CONNECT

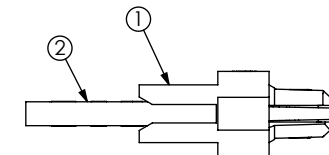
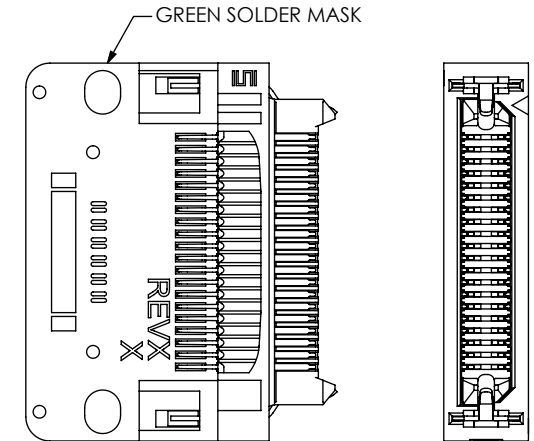
TABLE 3		
NET COUNT		
TYPE	NETS	POINTS
POINT TO POINT	24	48
GND	1	29
NC	0	11

CRITICAL DIMENSION INSPECTION INSTRUCTION TABLE	
ASSEMBLY OPERATION	IN-PROCESS INSPECTION
PREP CABLE	C3, C4
E-TEST	C1, C2

J2
SUB-HDR-223041-01

Pb THIS PRODUCT MANUFACTURED WITH LEAD-FREE PROCESSING

SUB SETUP OPTION:
HDR-SUB-02



1

SUB-HDR-223041-01 BOM			
ITEM NO.	PART NUMBER	QUANTITY	MATERIAL
1	ERM8-020-01-S-D-EM2-SL	1	TERMINAL
2	PCB-111664-HDR-01	1	PCB

PROPRIETARY NOTE
THIS DOCUMENT CONTAINS CONFIDENTIAL AND PROPRIETARY INFORMATION AND ALL DESIGN, MANUFACTURING, REPRODUCTION, USE, PATENT RIGHTS AND SALES RIGHTS ARE EXPRESSLY RESERVED BY SAMTEC, INC. THIS DOCUMENT SHALL NOT BE DISCLOSED, IN WHOLE OR PART, TO ANY UNAUTHORIZED PERSON OR ENTITY NOR REPRODUCED, TRANSFERRED OR INCORPORATED IN ANY OTHER PROJECT IN ANY MANNER WITHOUT THE EXPRESS WRITTEN CONSENT OF SAMTEC, INC.

samtec
520 PARK EAST BLVD, NEW ALBANY, IN 47150
PHONE: 812-944-6733 FAX: 812-948-5047
e-Mail info@SAMTEC.com code 55322

DO NOT SCALE DRAWING

DESCRIPTION:
CUSTOM HDR CABLE ASSEMBLY

DWG. NO.
HDR-223041-XX-ECUE

SHEET SCALE: 2:1

BY: CANDY W 6/1/2021 SHEET 2 OF 2