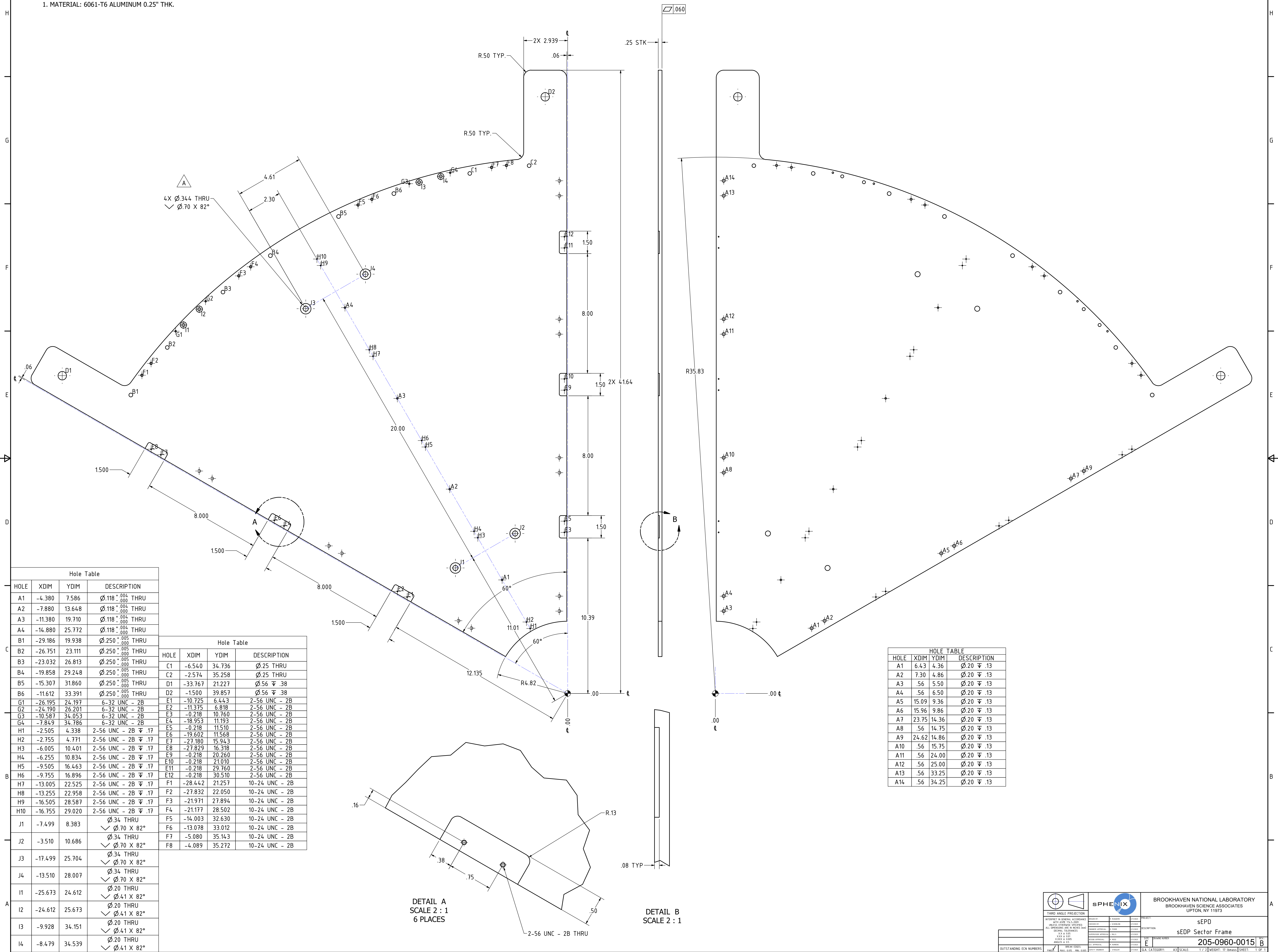


REVISION HISTORY				
ZONE	REV	DESCRIPTION	DATE	APPROVED
	A		2/3/2023	Rich Admin
	B	ADDED HOLES FOR HANDLES	2/15/2023	R. FEDER

NOTES:  
1. MATERIAL: 6061-T6 ALUMINUM 0.25" THK.



Hole Table			
HOLE	XDIM	YDIM	DESCRIPTION
A1	-4.380	7.586	Ø.118 <sup>+0.004</sup> <sub>-0.000</sub> THRU
A2	-7.880	13.648	Ø.118 <sup>+0.004</sup> <sub>-0.000</sub> THRU
A3	-11.380	19.710	Ø.118 <sup>+0.004</sup> <sub>-0.000</sub> THRU
A4	-14.880	25.772	Ø.118 <sup>+0.004</sup> <sub>-0.000</sub> THRU
B1	-29.186	19.938	Ø.250 <sup>+0.005</sup> <sub>-0.000</sub> THRU
B2	-26.751	23.111	Ø.250 <sup>+0.005</sup> <sub>-0.000</sub> THRU
B3	-23.032	26.813	Ø.250 <sup>+0.005</sup> <sub>-0.000</sub> THRU
B4	-19.858	29.248	Ø.250 <sup>+0.005</sup> <sub>-0.000</sub> THRU
B5	-15.307	31.860	Ø.250 <sup>+0.005</sup> <sub>-0.000</sub> THRU
B6	-11.612	33.391	Ø.250 <sup>+0.005</sup> <sub>-0.000</sub> THRU
G1	-26.195	24.197	6-32 UNC - 2B
G2	-24.190	26.201	6-32 UNC - 2B
G3	-10.587	34.053	6-32 UNC - 2B
G4	-7.849	34.786	6-32 UNC - 2B
H1	-2.505	4.338	2-56 UNC - 2B ▽.17
H2	-2.755	4.771	2-56 UNC - 2B ▽.17
H3	-6.005	10.401	2-56 UNC - 2B ▽.17
H4	-6.255	10.834	2-56 UNC - 2B ▽.17
H5	-9.505	16.463	2-56 UNC - 2B ▽.17
H6	-9.755	16.896	2-56 UNC - 2B ▽.17
H7	-13.005	22.525	2-56 UNC - 2B ▽.17
H8	-13.255	22.958	2-56 UNC - 2B ▽.17
H9	-16.505	28.587	2-56 UNC - 2B ▽.17
H10	-16.755	29.020	2-56 UNC - 2B ▽.17
J1	-7.499	8.383	Ø.34 THRU
J2	-3.510	10.686	Ø.34 THRU
J3	-17.499	25.704	Ø.34 THRU
J4	-13.510	28.007	Ø.34 THRU
I1	-25.673	24.612	Ø.20 THRU
I2	-24.612	25.673	Ø.20 THRU
I3	-9.928	34.151	Ø.20 THRU
I4	-8.479	34.539	Ø.20 THRU

Hole Table			
HOLE	XDIM	YDIM	DESCRIPTION
C1	-6.540	34.736	Ø.25 THRU
C2	-2.574	35.258	Ø.25 THRU
D1	-33.767	21.227	Ø.56 ▽.38
D2	-1.500	39.857	Ø.56 ▽.38
E1	-10.725	6.443	2-56 UNC - 2B
E2	-11.375	6.818	2-56 UNC - 2B
E3	-0.218	10.760	2-56 UNC - 2B
E4	-18.953	11.193	2-56 UNC - 2B
E5	-0.218	11.510	2-56 UNC - 2B
E6	-19.602	11.568	2-56 UNC - 2B
E7	-27.180	15.943	2-56 UNC - 2B
E8	-27.829	16.318	2-56 UNC - 2B
E9	-0.218	20.260	2-56 UNC - 2B
E10	-0.218	21.010	2-56 UNC - 2B
E11	-0.218	29.760	2-56 UNC - 2B
E12	-0.218	30.510	2-56 UNC - 2B
F1	-28.442	21.257	10-24 UNC - 2B
F2	-27.832	22.050	10-24 UNC - 2B
F3	-21.971	27.894	10-24 UNC - 2B
F4	-21.177	28.502	10-24 UNC - 2B
F5	-14.003	32.630	10-24 UNC - 2B
F6	-13.078	33.012	10-24 UNC - 2B
F7	-5.080	35.143	10-24 UNC - 2B
F8	-4.089	35.272	10-24 UNC - 2B

HOLE TABLE			
HOLE	XDIM	YDIM	DESCRIPTION
A1	6.43	4.36	Ø.20 ▽.13
A2	7.30	4.86	Ø.20 ▽.13
A3	.56	5.50	Ø.20 ▽.13
A4	.56	6.50	Ø.20 ▽.13
A5	15.09	9.36	Ø.20 ▽.13
A6	15.96	9.86	Ø.20 ▽.13
A7	23.75	14.36	Ø.20 ▽.13
A8	.56	14.75	Ø.20 ▽.13
A9	24.62	14.86	Ø.20 ▽.13
A10	.56	15.75	Ø.20 ▽.13
A11	.56	24.00	Ø.20 ▽.13
A12	.56	25.00	Ø.20 ▽.13
A13	.56	33.25	Ø.20 ▽.13
A14	.56	34.25	Ø.20 ▽.13

DETAIL A  
SCALE 2 : 1  
6 PLACES

DETAIL B  
SCALE 2 : 1

		BROOKHAVEN NATIONAL LABORATORY BROOKHAVEN SCIENCE ASSOCIATES UPTON, NY 11973	
		sEDP sEDP Sector Frame	
PROJECT NO: 205-0960-0015 SHEET NO: 1 OF 1	DATE: 2/15/2023	DRAWN BY: R. FEDER	CHECKED BY: R. FEDER
OUTSTANDING EEN NUMBERS	SCALE: 1/2" = 1"	WEIGHT: 17 lbs	SHEET: 1 OF 1