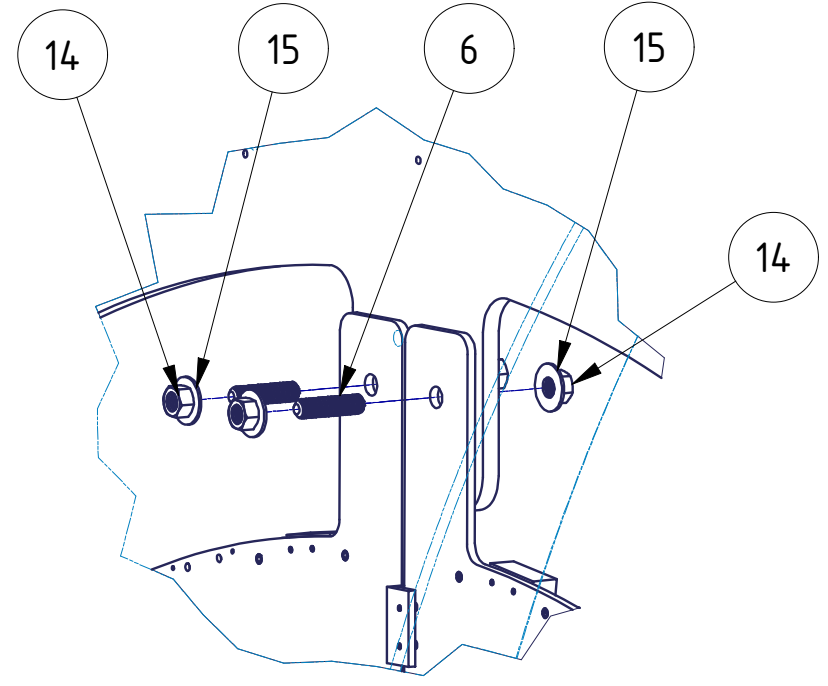
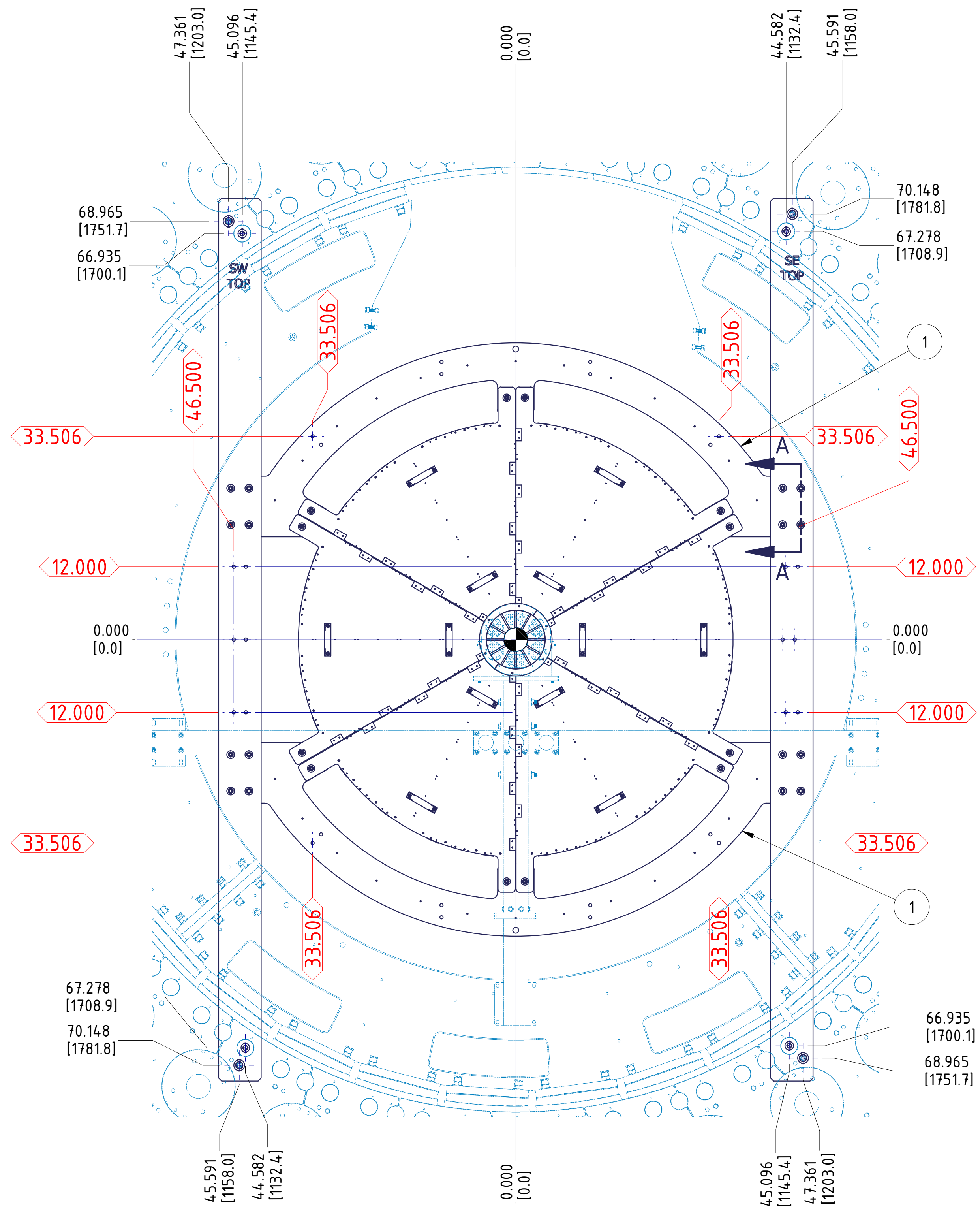
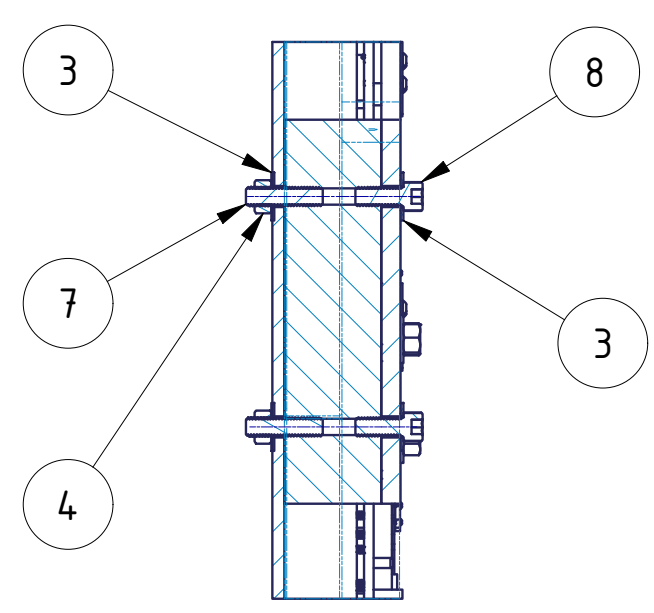


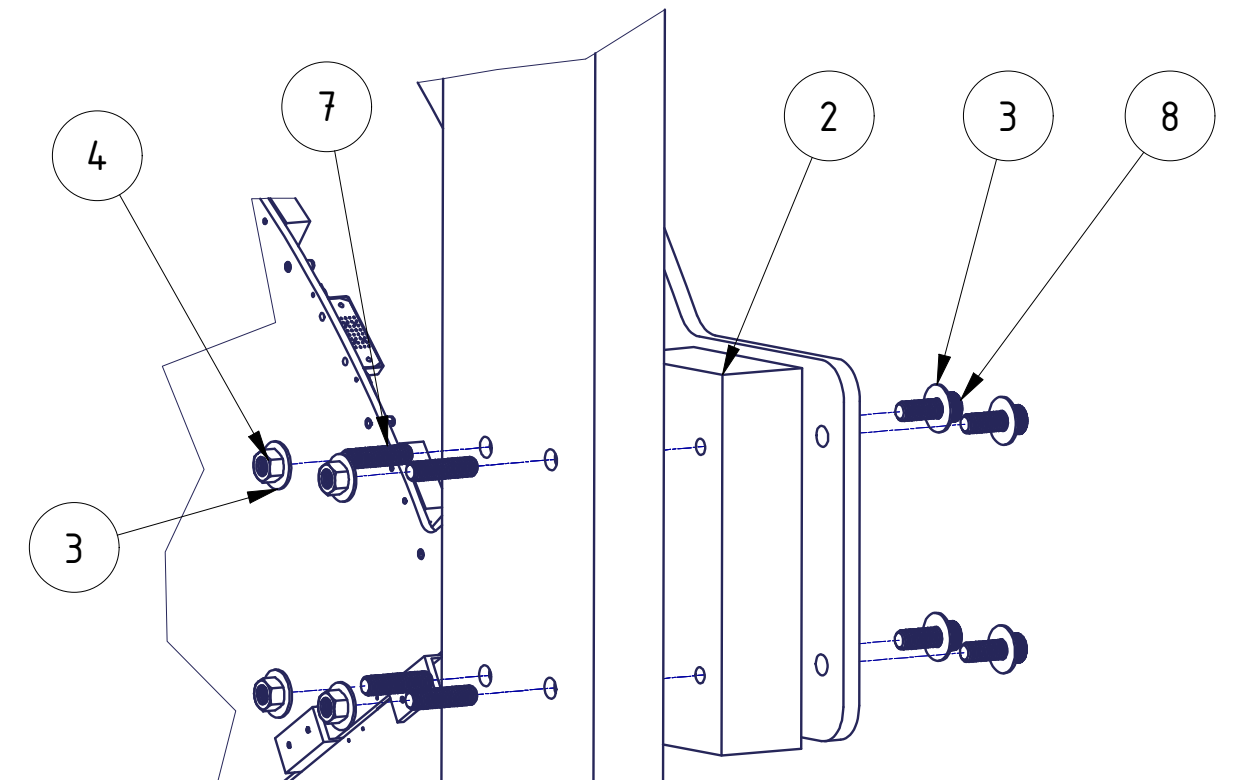
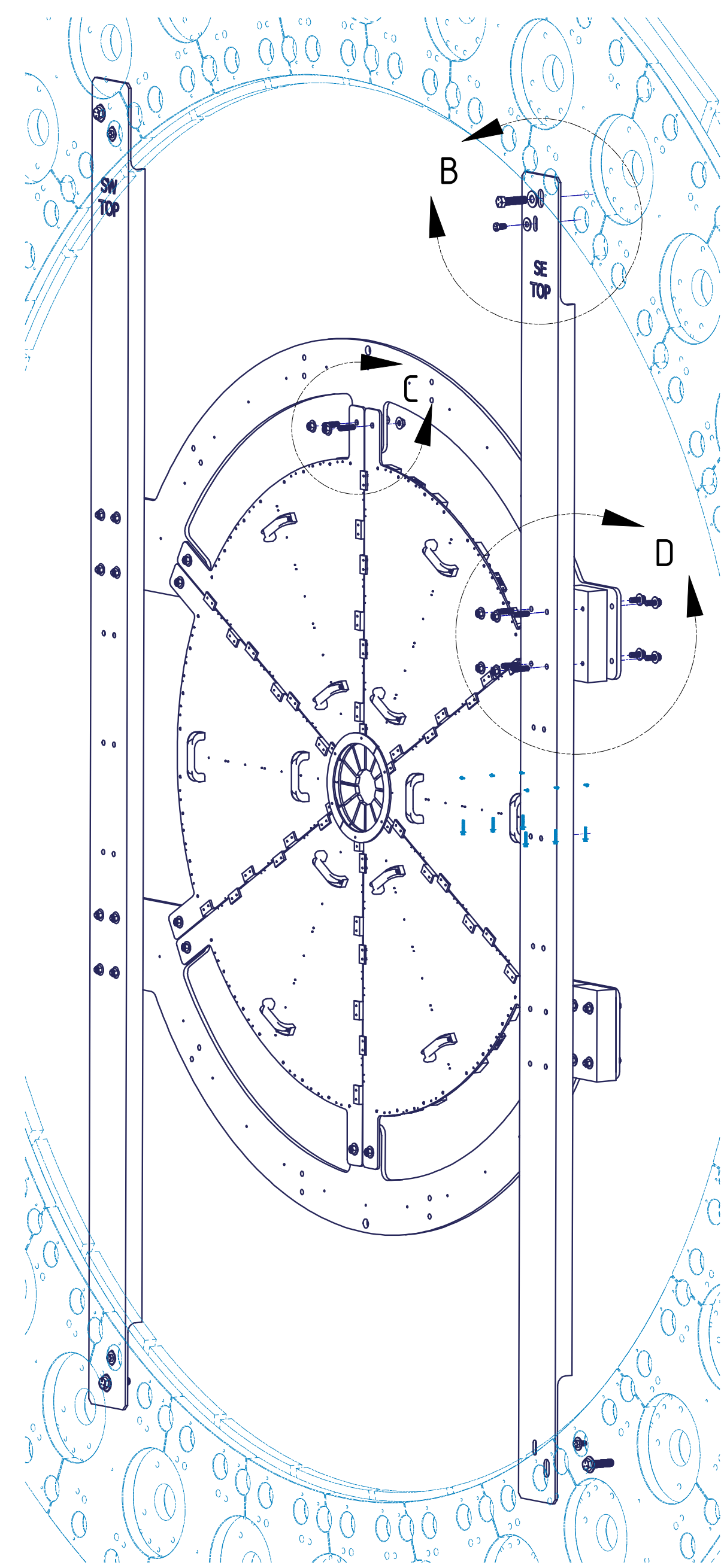
REVISION HISTORY					
REV	ECN NUMBER	ZONE	DESCRIPTION	DATE	APPROVED
A				5/10/2022	richadmin



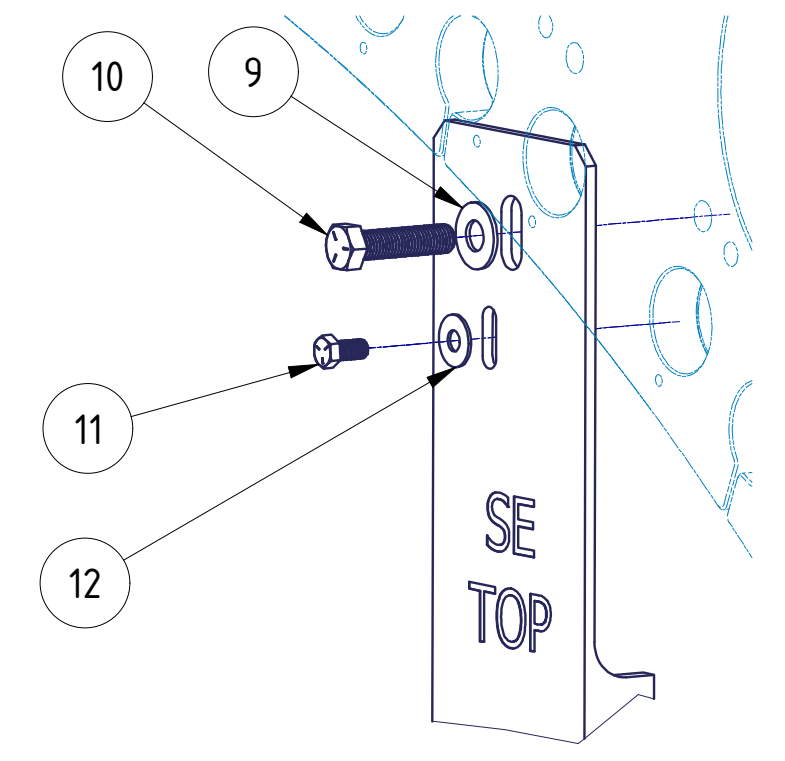
DETAIL C  
SCALE 0.2



SECTION A-A  
SCALE 0.2



DETAIL D  
SCALE 0.2



DETAIL B  
SCALE 0.2

QTY	ITEM	PART NUMBER	DESCRIPTION
24	15	McMaster-Carr #92141A033	1/2-13 18-8 Stainless Steel Washer
24	14	McMaster-Carr #95462A033	1/2-13 HEX NUT
12	13	McMaster-Carr #92311A720 or Equiv.	1/2-13 x 2.0 LG 18-8 Stainless Steel Cup-Point Set Screw
4	12	McMaster-Carr #91860A033 or Equiv.	1/2" 17-7 PH Stainless Steel Washer
4	11	McMaster-Carr #92865A712 or Equiv.	1/2-13 x 1.0 LG Grade 5 Steel Hex Head Screw
4	10	McMaster-Carr #92865A847 or Equiv.	3/4-10 x 3.0 LG Grade 5 Steel Hex Head Screw
4	9	McMaster-Carr #92141A056 or Equiv.	3/4" 18-8 Stainless Steel Washer
16	8	McMaster-Carr #92196A714 or Equiv.	1/2-13 x 1.25 LG 18-8 Stainless Steel Socket Head Screw
16	7	McMaster-Carr #95412A720 or Equiv.	1/2-13 x 2.0 LG 18-8 Stainless Steel Threaded Rod
1	6	205-0960-0014	Support Channel SW
1	5	205-0960-0013	Support Channel SE
16	4	McMaster-Carr #91845A310 or Equiv.	1/2-13 18-8 Stainless Steel Hex Nut
32	3	McMaster-Carr #92141A033 or Equiv.	1/2 18-8 Stainless Steel Washer
4	2	205-0960-0012	Spacer Block
2	1	205-0960-0011	sEPD-Support-Ring

BILL OF MATERIALS

**SURVEY LOCATIONS ADDED  
NORTH & SOUTH  
4/5/2023**

THIRD ANGLE PROJECTION

SPHENIX

**BROOKHAVEN NATIONAL LABORATORY**  
BROOKHAVEN SCIENCE ASSOCIATES  
UPTON, NY 11973

INTERPRET IN GENERAL ACCORDANCE WITH ASME Y14.5-2009 UNLESS OTHERWISE SPECIFIED. ALL DIMENSIONS ARE IN INCHES (mm).

DECIMAL TOLERANCES:  
XXX ± 0.01  
X.XXX ± 0.005  
ANGLES ± 0.5

BREAK EDGES:  
FINISH: MAX. 0.005 MIN. 0.005

BRN BY: H. Rogers 5/10/2022  
CHKD BY: H. Foster 5/10/2022  
ENGR APPROVAL: H. Foster 5/10/2022  
SUPERVISOR APPROVAL: J. Hill 5/10/2022  
DESIGN APPROVAL: H. Foster 5/10/2022  
S.A. APPROVAL: H. Rogers 5/10/2022

PROJECT: sEPD  
DESCRIPTION: sEPD Installation - South  
SCALE: D  
DRAWING NUMBER: 205-0960-0010  
REV: A

OUTSTANDING ECN NUMBERS	250	FINISH	MAX. 0.005 MIN. 0.005	SAFETY ENGINEER	H. Shaper	5/10/2022	D.A. CATEGORY:	A3	SCALE:	0.08	WEIGHT:	N/A	SHEET:	1 OF 1
-------------------------	-----	--------	-----------------------	-----------------	-----------	-----------	----------------	----	--------	------	---------	-----	--------	--------