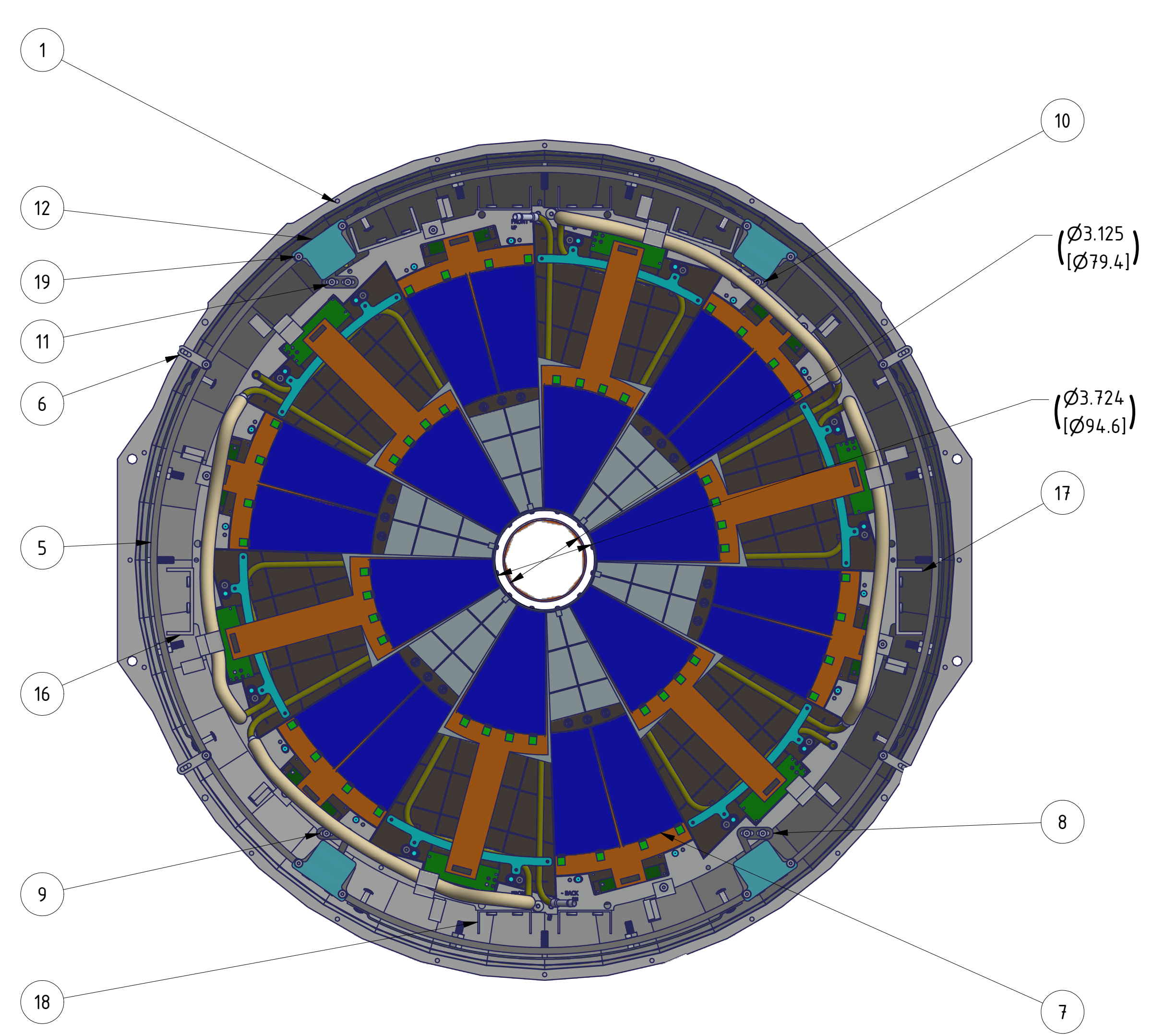
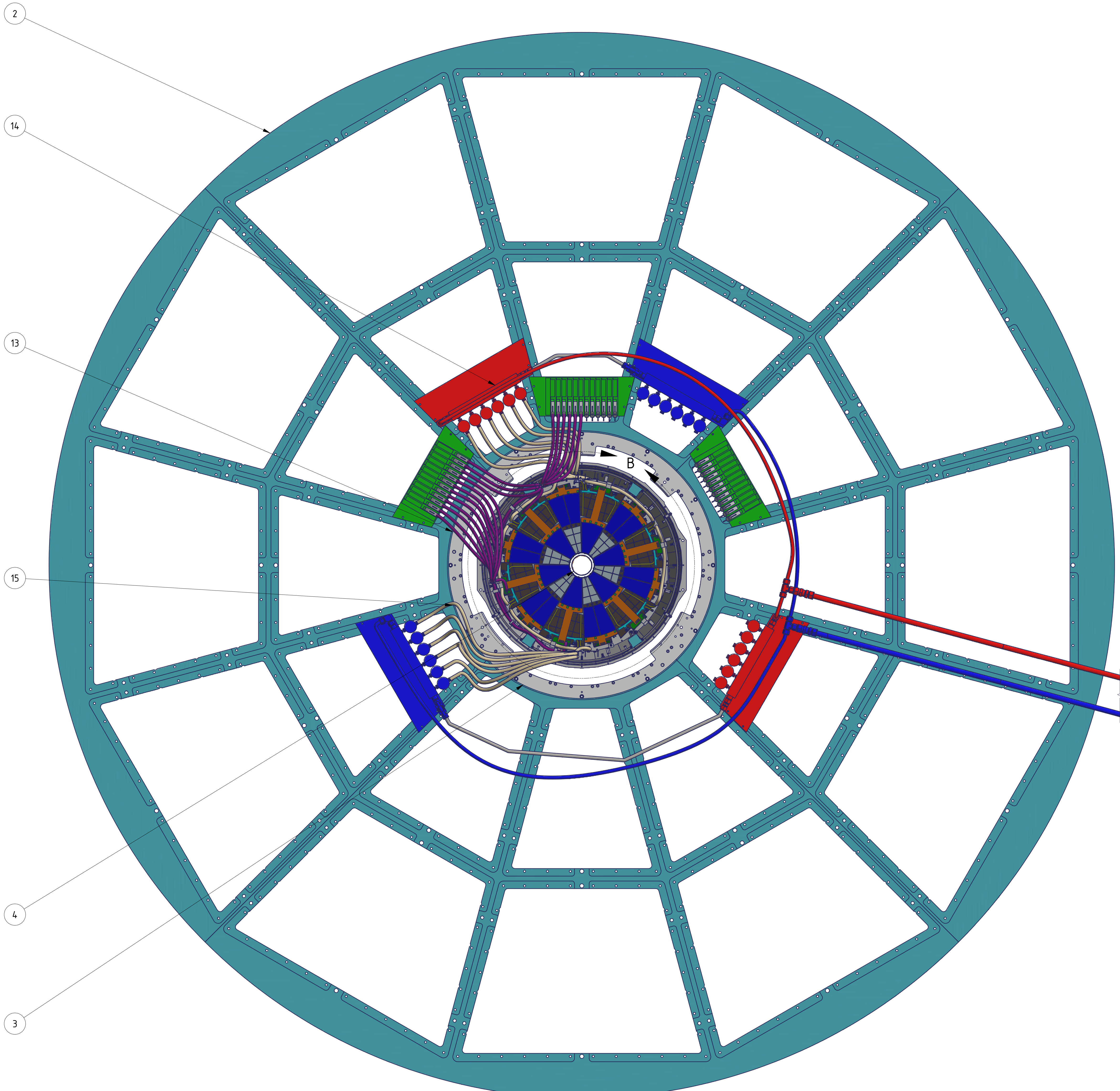
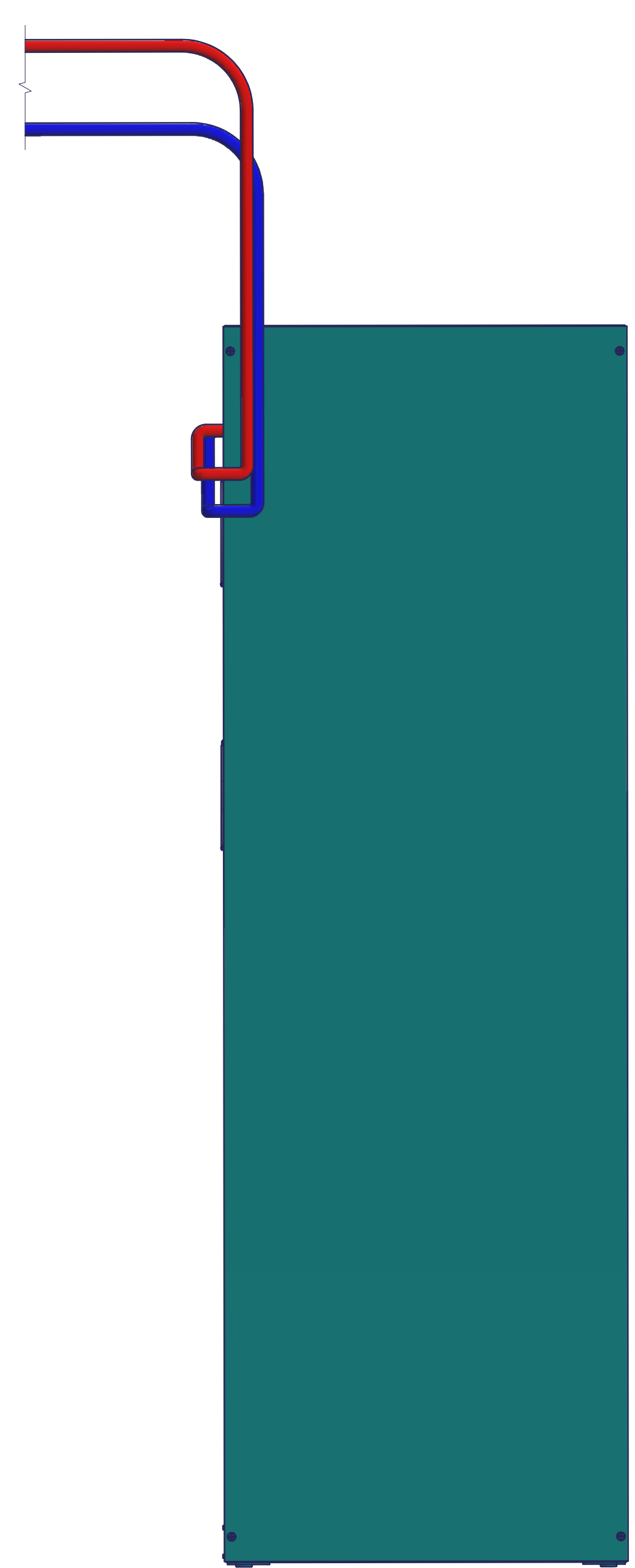


REV		ECN NUMBER		ZONE		REVISION HISTORY		DATE		APPROVED	



DETAIL B

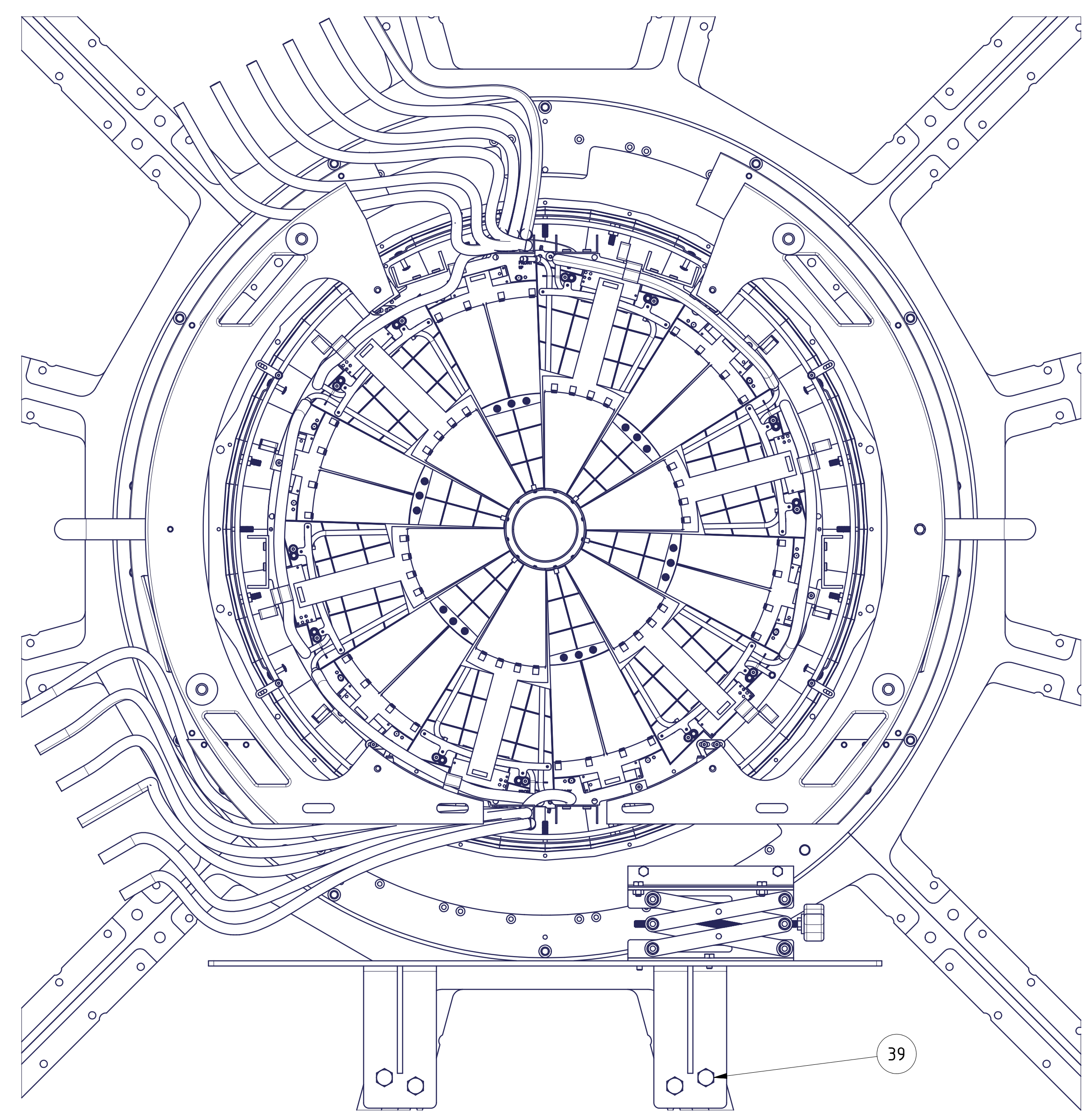
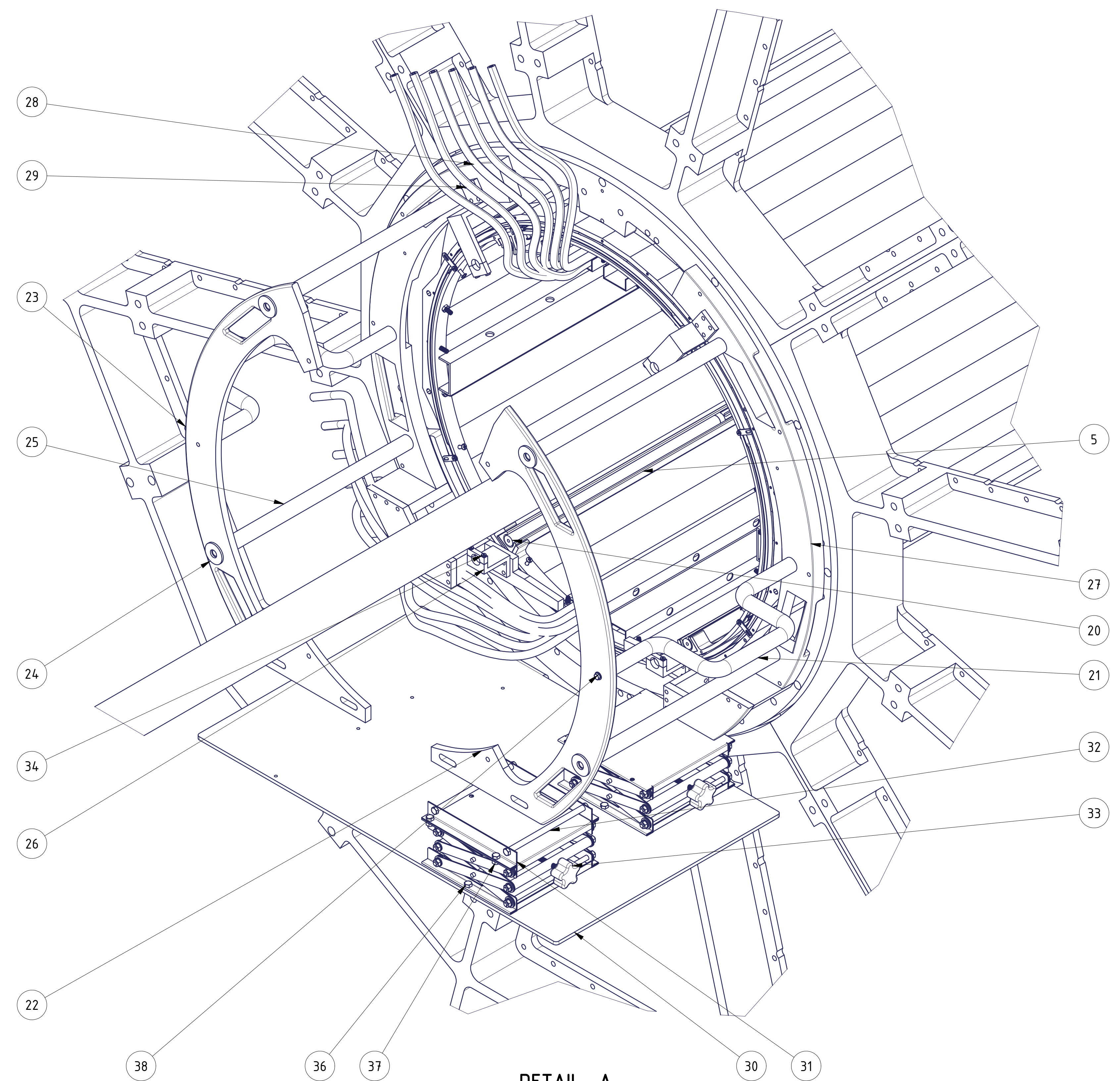
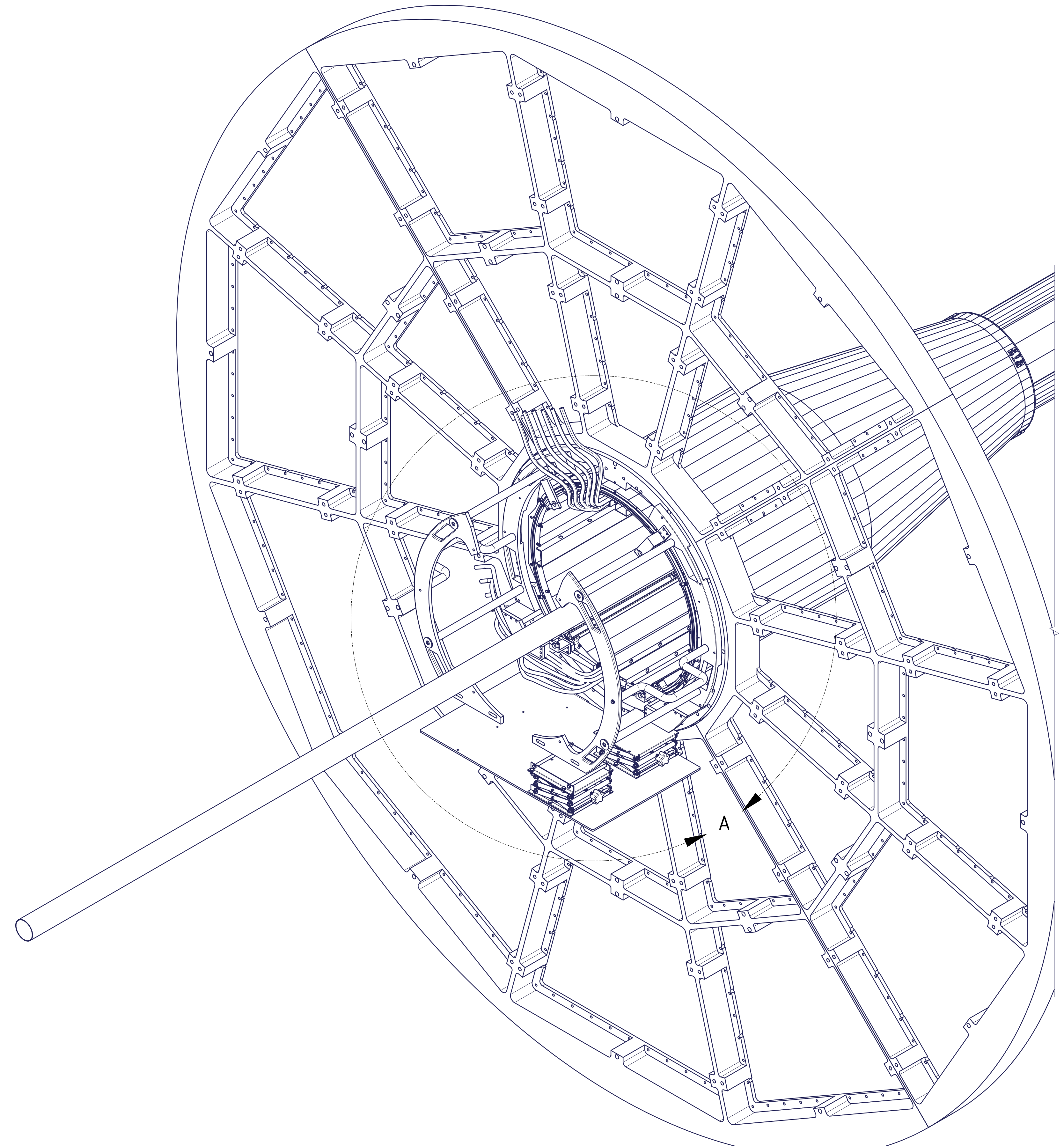


QTY	ITEM	PART NUMBER	DESCRIPTION
60	19	93615A380_McMASTER	SOCKET CAP SCREW_TYPE 18-8 SS LOW PROFILE_10-32 X 1/2L
4	18	900K923_McMASTER	ARCHT. 6061 ALUMINUM U-CHANNEL
2	17	900K784_L_McMASTER	ARCHITECTURAL 6063 ALUMINUM U-CHANNEL
2	16	900K784_McMaster	ARCHT. 6063 AL. U-CHANNEL
1	15	Run 02	COOLING LINES
1	14	IST Services External-Simple	COOLING LINES SYSTEM
1	13	FST Assembly-2.Harness4	CABLE SYSTEM
4	12	SlideLock	STATIONARY LOCK SYSTEM (FST)
3	11	FST Plane Holding Bracket-3	TOP - SOLID RAIL HOLDING BRACKET - RIGHT
3	10	FST Plane Holding Bracket-3L	TOP - SOLID RAIL HOLDING BRACKET - LEFT
3	9	FST Plane Holding Bracket-2	BOTTOM - SOLID RAIL HOLDING BRACKET - RIGHT
3	8	FST Plane Holding Bracket-2L	BOTTOM - SOLID RAIL HOLDING BRACKET - LEFT
3	7	FST_Disk_0415	Full Disk Assy
4	6	ROTATION STOPPER	ROTATIONAL PREVENTION (SS RING)
1	5	Inner Rail Structure Assembly	DISK STRUCTURAL SUPPORTS ASSY.
1	4	Beam Pipe	BEAM PIPE ASSY
1	3	TPC iFC	STAR iFC End Ring (WEST)
1	2	TPC Wheel	TPC WHEEL ASSY
1	1	CONE ASSEMBLY	FST CONE

BILL OF MATERIALS

		BROOKHAVEN NATIONAL LABORATORY BROOKHAVEN SCIENCE ASSOCIATES UPTON, NY 11973	
PROJECT: STAR - FST DESCRIPTION: FORWARD SILICON TRACKING EXP.		DRAWING NUMBER: FST Assembly DATE: E	
MATERIAL: 304 BREAK CODE: 100-1100-1100		U.S. CATEGORY: A3 SCALE: 1:1 WEIGHT: N/A SHEET: 1 OF 3	

REVISION HISTORY					
REV	EEN NUMBER	ZONE	DESCRIPTION	DATE	APPROVED



QTY	ITEM	PART NUMBER	DESCRIPTION
4	39	AS 2465 - 1/2 x 1 UNC	Unified hexagon bolts, screws and nuts (UNC and UNF threads)
2	38	ANSI B18.6.3 - 1/4-20 UNC x 1, PHWHMSI	Hexagon Head Screw
2	37	ANSI B18.2.2 - 1/4 - 20, HNI	Hex Nuts (Inch Series) Hex Nut
10	36	ANSI/ASME B18.2.1 - 1/4-20 UNC - 0.5, HBI	Hex Bolt - UNC (Regular Thread - Inch)
48	35	9066A016_McMASTER	SOCKET HEAD CAP SCREW_TYPE 316 SS LOW PROFILE
8	34	9365A390_McMASTER	SOCKET CAP SCREW_TYPE 18-8 SS LOW PROFILE
2	33	996TT440_McMASTER	BENCH-TOP ADJ. POS. STAND
2	32	1658T82_McMASTER	ARCHIT. 6063 ALUM ROUND TUBE
2	31	Bench-Slide Stopper	INST. SAFETY HOLDER (FST)
1	30	Installation Table-2	TABLE FOR FST INST.
2	29	Back Plate-Top	INST. SAFETY BRACKET (SOLID RAIL)
1	28	OuterPartial Ring-2L	INST. SUPPORT RING (LEFT)
1	27	OuterPartial Ring-2R	INST. SUPPORT RING (RIGHT)
2	26	Back Plate	INST. SAFETY BRACKET (SOLID RAIL)
4	25	Outer Rail	INST. OUTER RAIL
4	24	Stopper	INST. OUTER RAIL STOPPER
1	23	Solid Rail Support Ring-2L	INST. SUPPORT RING - LEFT
1	22	Solid Rail Support Ring-2R	INSTALLATION SUPPORT RING
2	21	Carry Handle	CARRY HANDLE
4	20	Solid Rail-3	SOLID RAIL ASSY

BILL OF MATERIALS

 BROOKHAVEN NATIONAL LABORATORY BROOKHAVEN SCIENCE ASSOCIATES UPTON, NY 11973	PROJECT: STAR - FST DESCRIPTION: FORWARD SILICON TRACKING EXP. FST Assembly
--	---

THIRD ANGLE PROJECTION

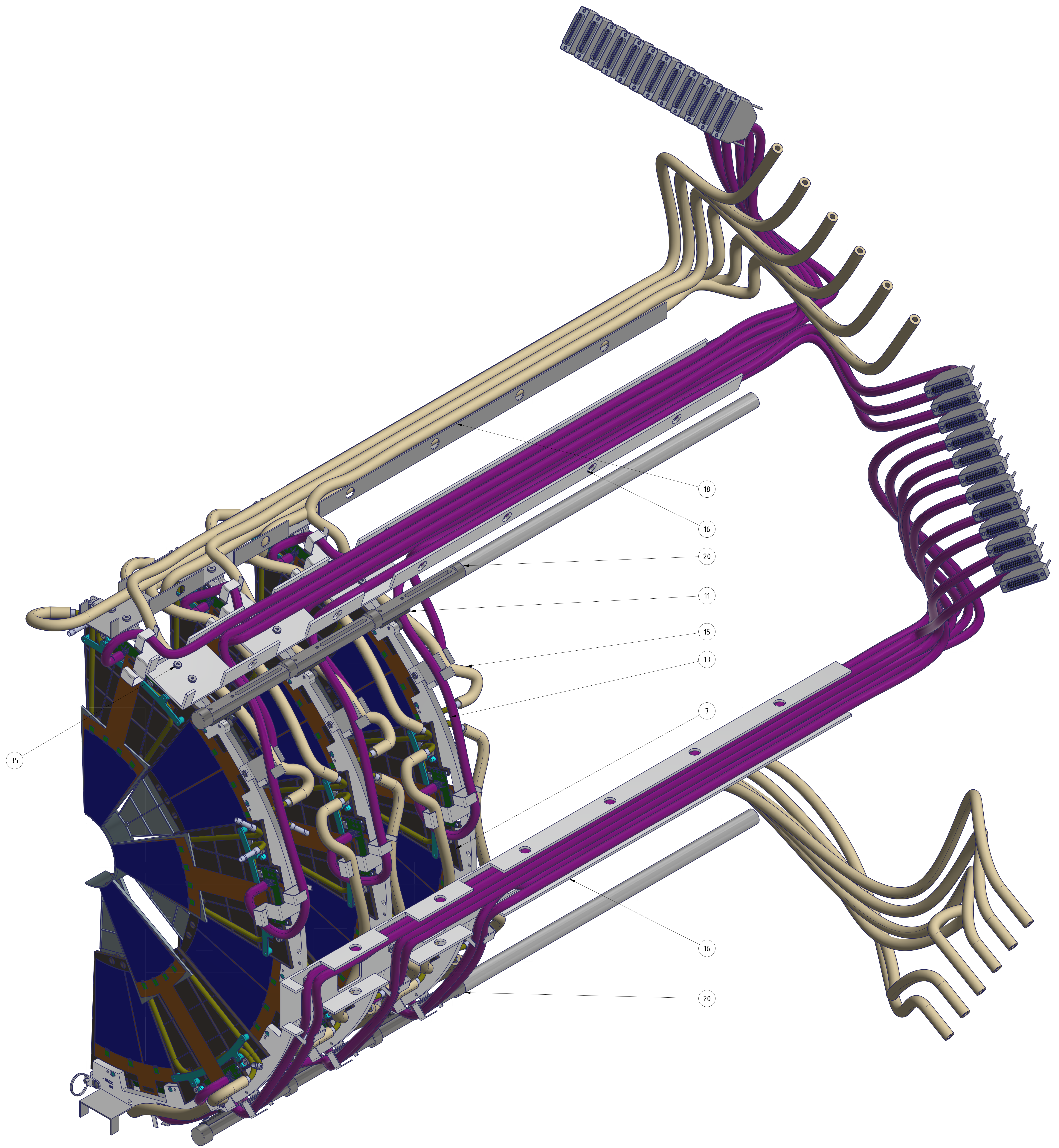
UNLESS OTHERWISE SPECIFIED:
 ALL DIMENSIONS ARE IN INCHES
 DIMENSIONS IN PARENTHESES ARE IN MILLIMETERS
 SURFACE FINISH: RAZED
 TOLERANCES: UNLESS OTHERWISE SPECIFIED:
 DECIMALS: ±0.005
 FRACTIONS: ±0.005
 HOLE DIA: ±0.005
 HOLE DIA: ±0.010

DATE: 1/20/2011
 DRAWN BY: J. J. J. J.
 CHECKED BY: J. J. J. J.
 APPROVED BY: J. J. J. J.

SCALE: 1/2" = 1"

SHEET: 2 OF 3

2		1	
REV	EEN NUMBER	ZONE	REVISION HISTORY
			DESCRIPTION
			DATE
			APPROVED



QTY	ITEM	PART NUMBER	DESCRIPTION
48	35	9066A016_MMASTER	SOCKET HEAD CAP SCREW_TYPE 316 SS LOW PROFILE
4	18	9001K923_McMASTER	ARCHIT. 6061 ALUMINUM U-CHANNEL
2	16	9001K784_McMaster	ARCHIT. 6063 AL. U-CHANNEL
1	15	Run 02	COOLING LINES
1	13	FST Assembly-2 Harness4	CABLE SYSTEM
3	11	FST Plane Holding Bracket-3	TOP - SOLID RAIL HOLDING BRACKET - RIGHT
3	7	FST_Disk_0415	Full Disk Assy

BILL OF MATERIALS

		BROOKHAVEN NATIONAL LABORATORY BROOKHAVEN SCIENCE ASSOCIATES UPTON, NY 11973	
		STAR - FST FORWARD SILICON TRACKING EXP. FST Assembly	
INTERNET: R. GARDNER, ACCORDANCE DATE: APR 2013 ALL DIMENSIONS ARE IN INCHES UNLESS OTHERWISE SPECIFIED DECIMAL TOLERANCES .XX ± .01 .XXX ± .005 ANGLES ± .5° SURFACE FINISH UNLESS OTHERWISE SPECIFIED	DRAWN BY: [] CHECKED BY: [] DATE: [] SCALE: [] SHEET: [] OF []	PROJECT: [] DESCRIPTION: [] DRAWING NUMBER: [] DATE: [] SCALE: [] SHEET: [] OF []	PROJECT: [] DESCRIPTION: [] DRAWING NUMBER: [] DATE: [] SCALE: [] SHEET: [] OF []

H
G
F
E
D
C
B
A

H
G
F
E
D
C
B
A

8 7 6 5 4 3 2 1

8 7 6 5 4 3 2 1