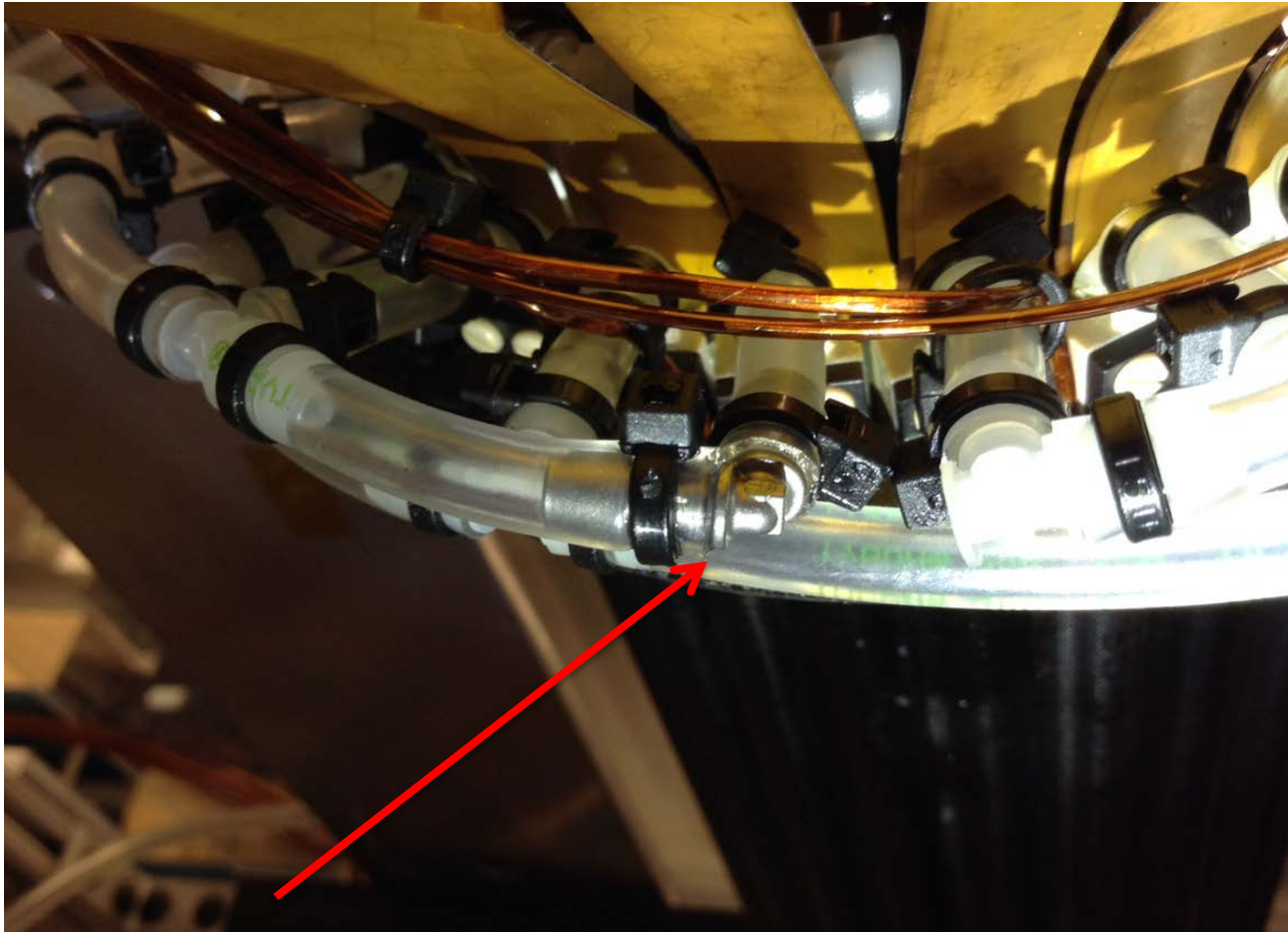


VTX Pixel East Barrel

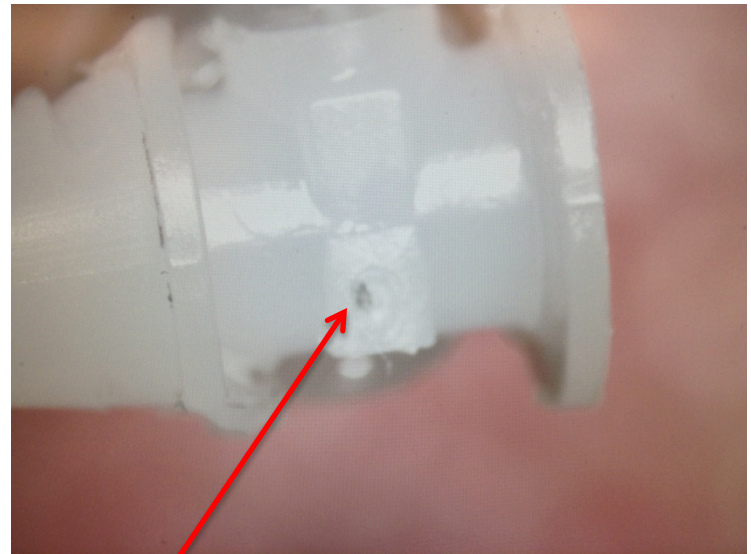
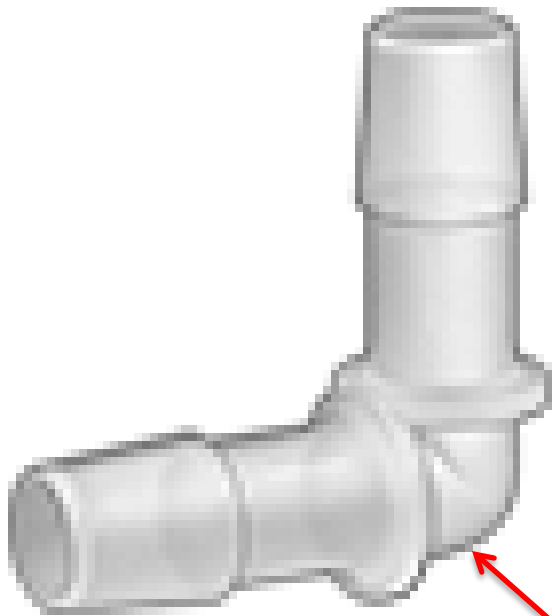
B0 leak rate at about 0.5 psi per hour starting at 25psi

B1 top rate is at about 0.75psi per hr starting at 25psi

B1 Bottom leak rate is at about 1 psi per hr starting at 25 psi after replacing an elbow



Location of leaking fitting. East detector, barrel 1. South Side. Bottom loop. Fitting was a plastic elbow. Leak was confirmed with a sniffer and Snoop. The fitting was replaced with a stainless elbow.



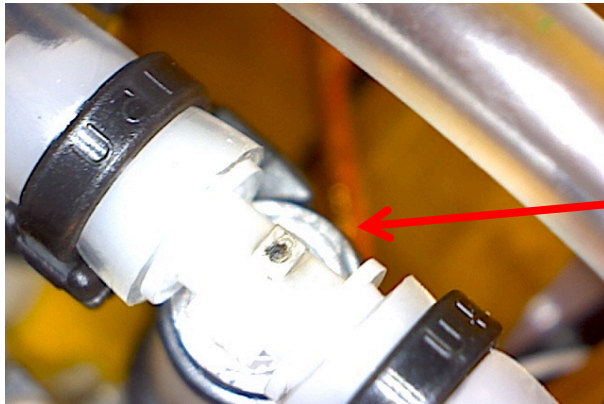
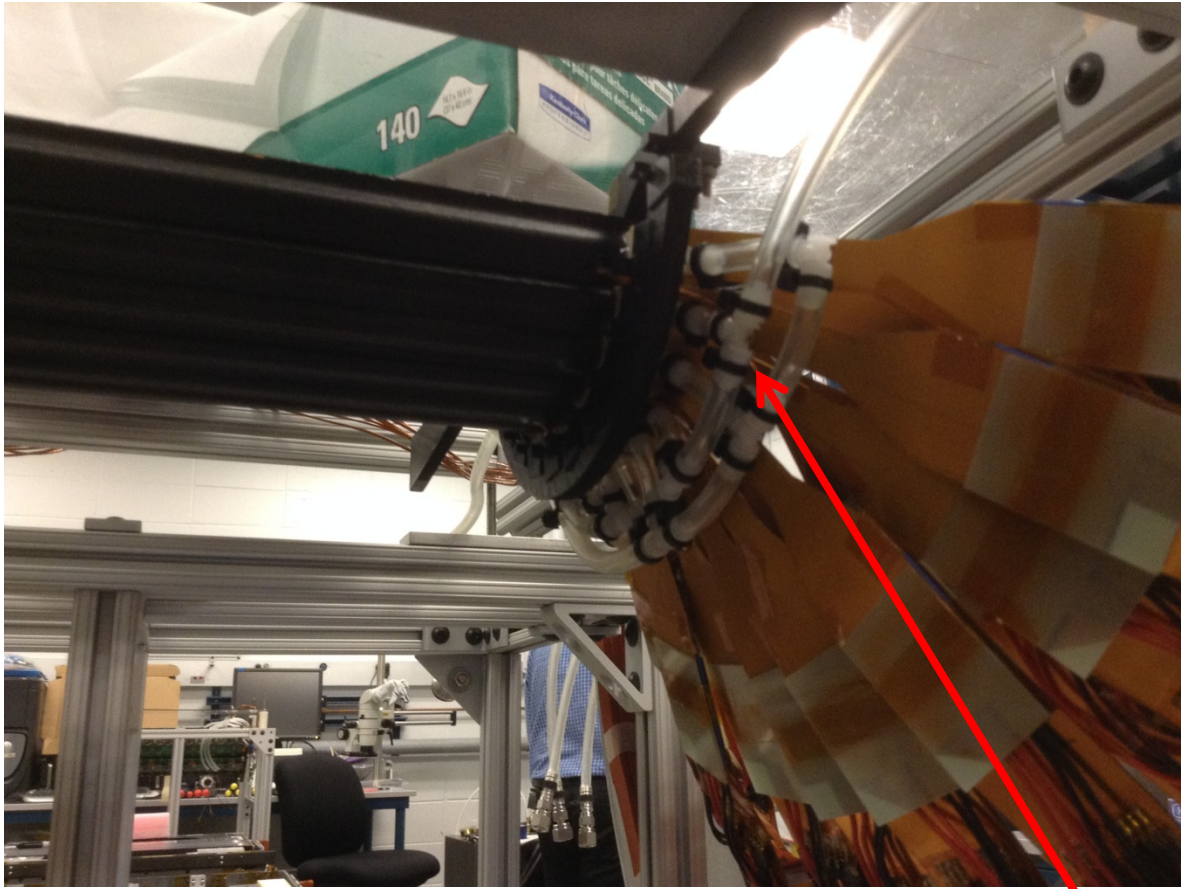
Location of hole in fitting

VTX Pixel West Barrel

B0 leak rate at about 0.6 psi per hour

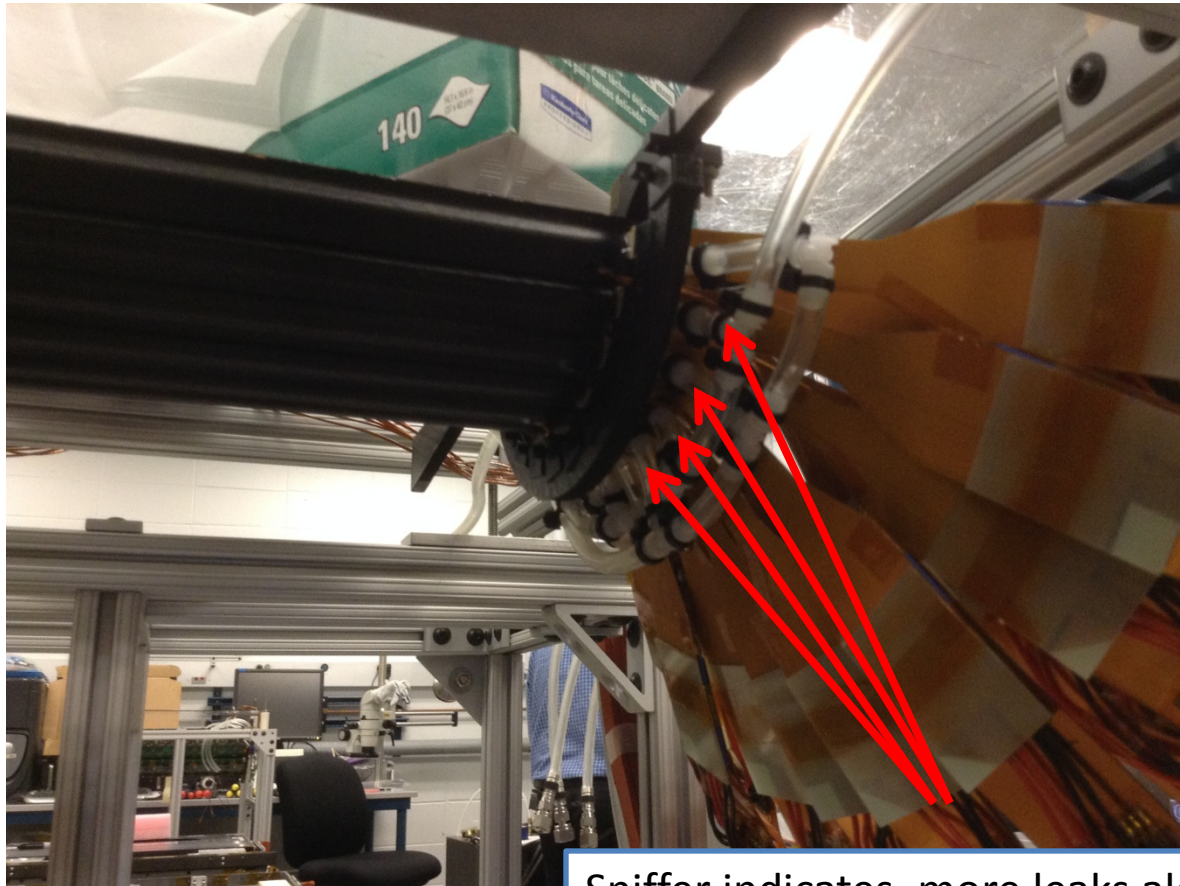
B1 top rate is at about 1psi per minute (drops to zero)

B1 Bottom leak rate is at about 1 psi per hr.



First Tee on the input of B1 top loop
West detector (Southside)

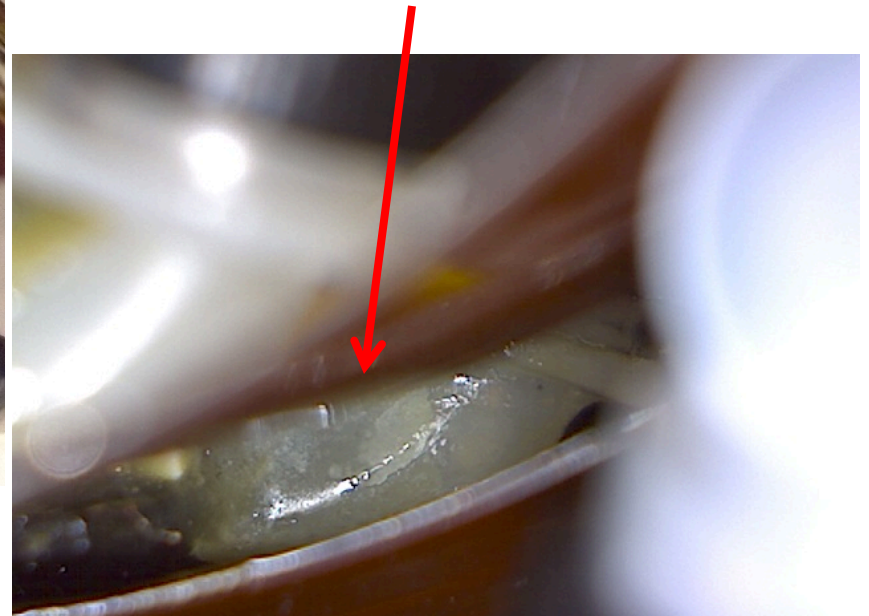
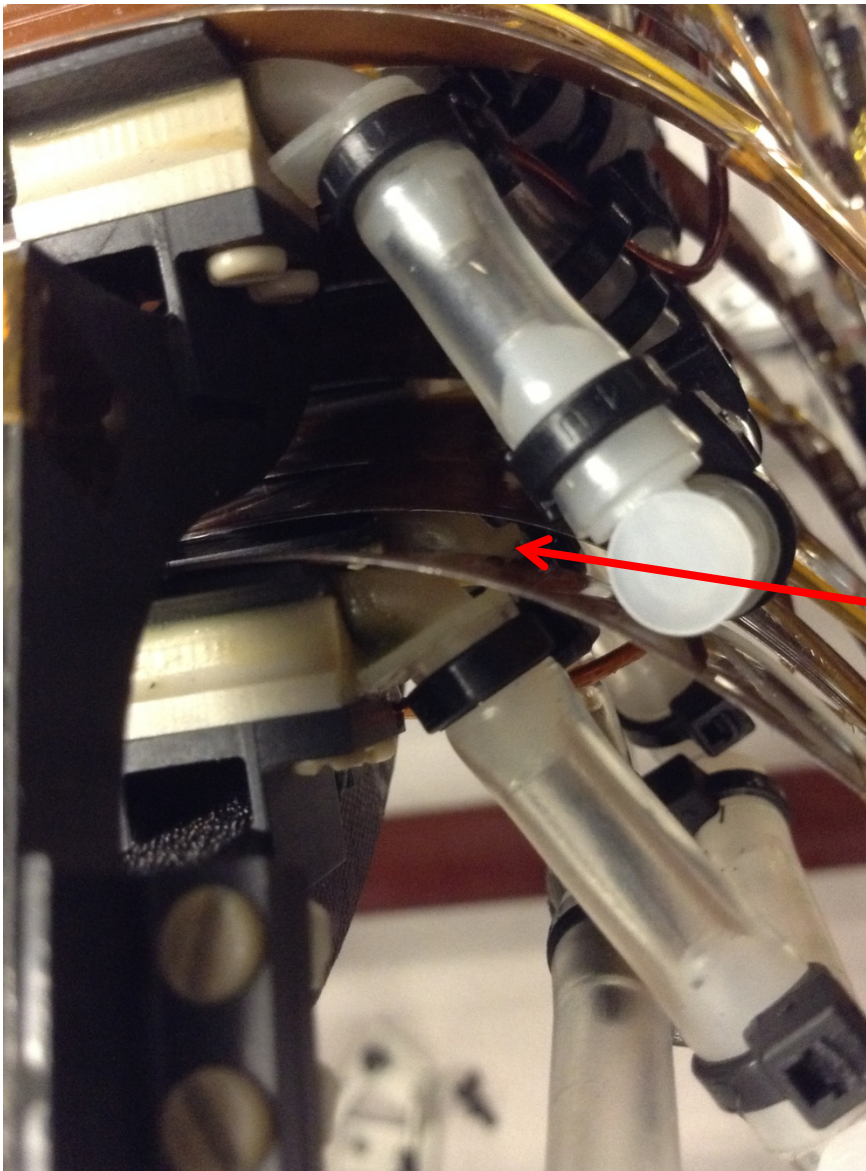
- Appears to be a burn mark
- Leak rate from point very small
- Still more leaks in the loop



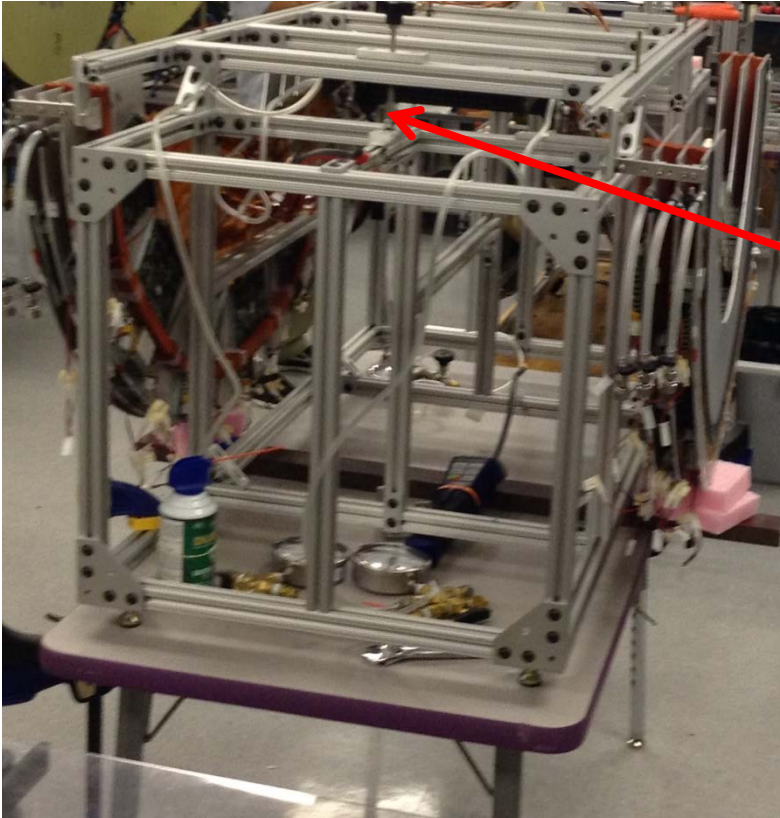
Sniffer indicates more leaks along the base of several B1 staves (top loop, South side— Pressure drops about 10 psi in 15 minutes)

One leak Located

- B1 Layer, second ladder down from the top.
- Leak is on the barb fitting on the stove.
- It looks like this section was repaired and the epoxy lifted off the barb
- This is just one area that I found

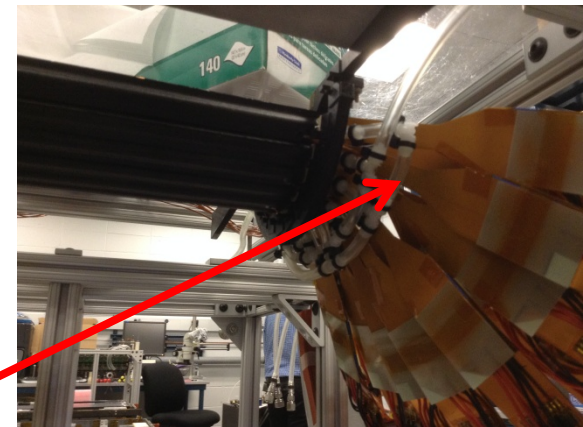
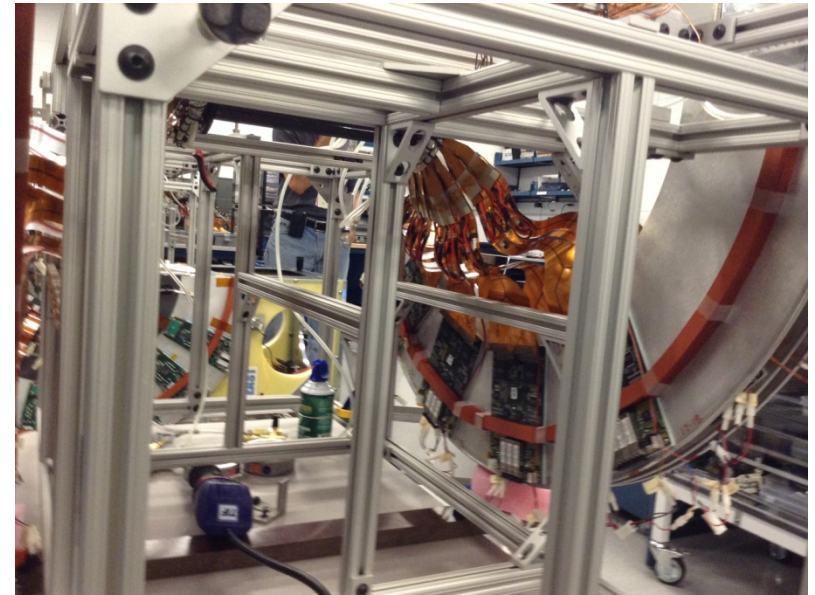
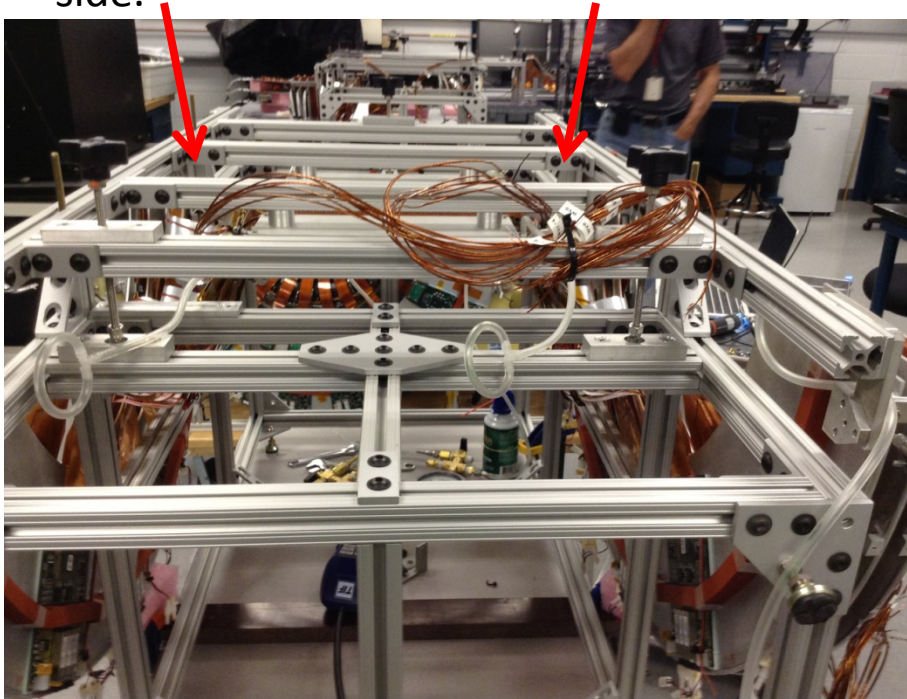


General Difficulties



Access for replacing to elbows and tee is extremely difficult and dangerous to the detector in its current configuration.

To access B1, we would have to reach in from the side (40-50cm). Only Edge tee's are accessible from the upper side.



You can only access the first and maybe second fitting from the top. The rest you would be working by feeling your way around. (not something I would do)

B0 also a concern

Manifold is under cables B0 cables. There is no safe way to work on this layer. Even if the cables are disconnected, there is a risk of pushing the cable up too far. Plus with both layers so close, there is also a concern that while removing a tube on B0, you could bump the B1 layer below it.

