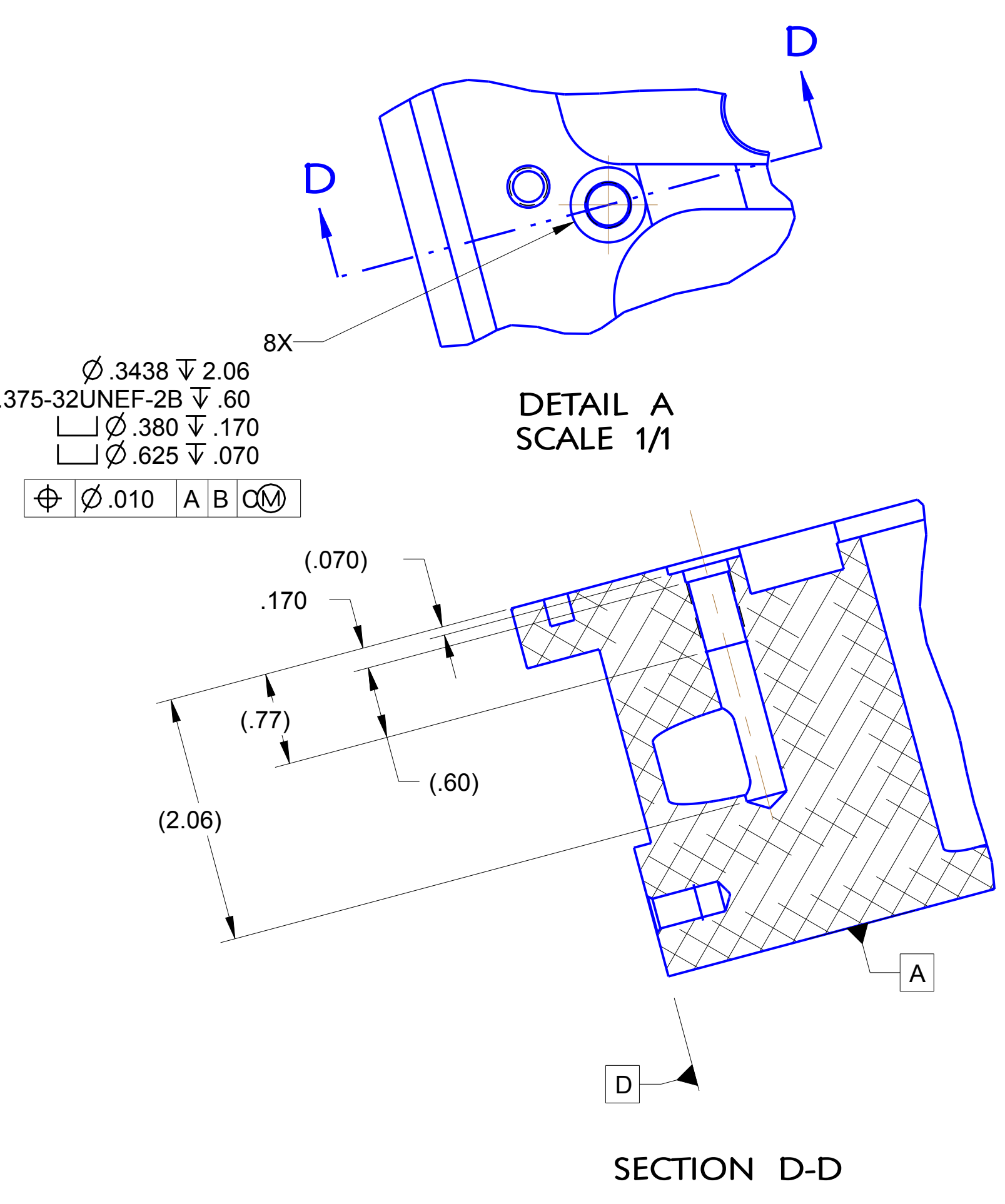
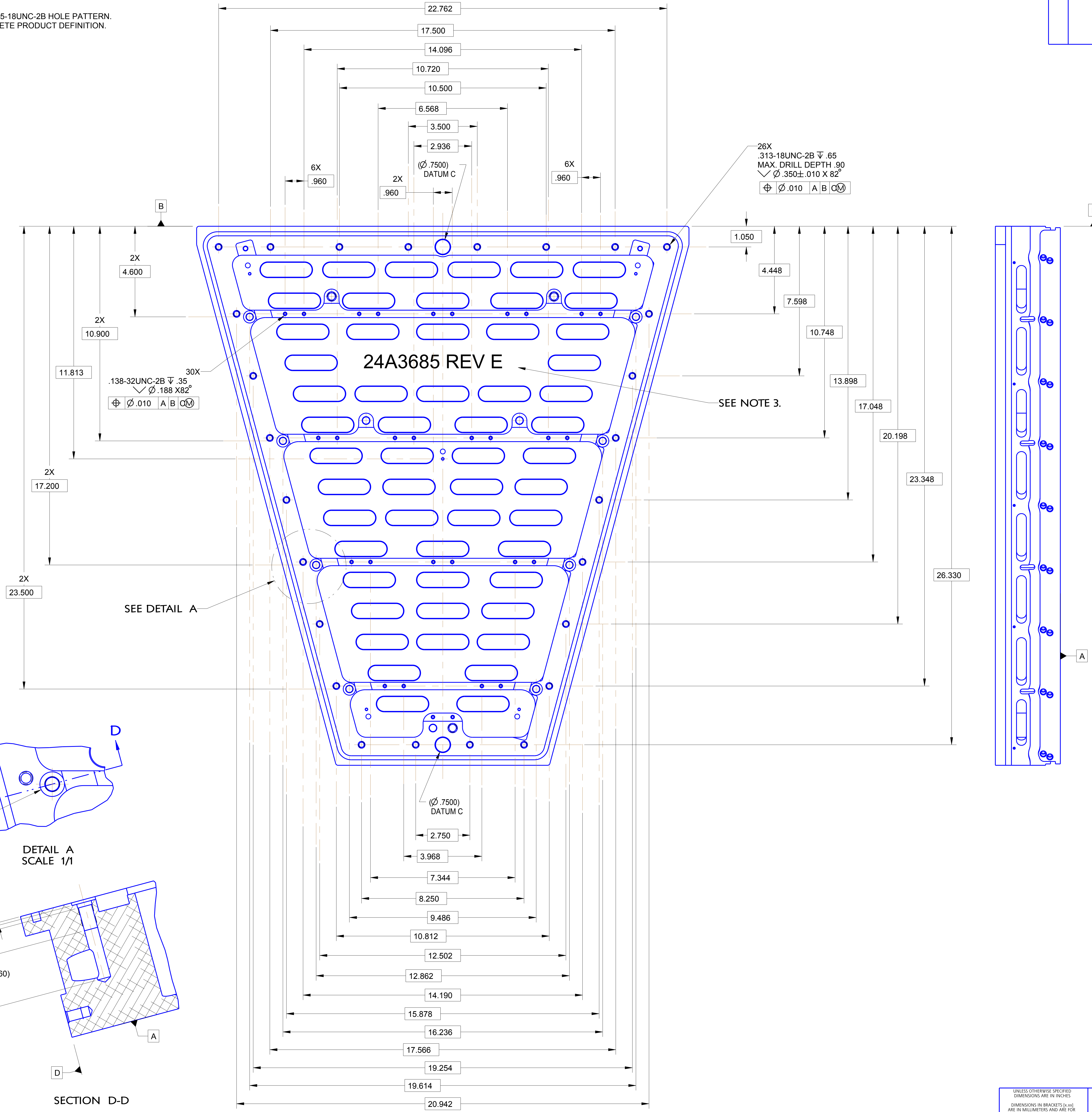


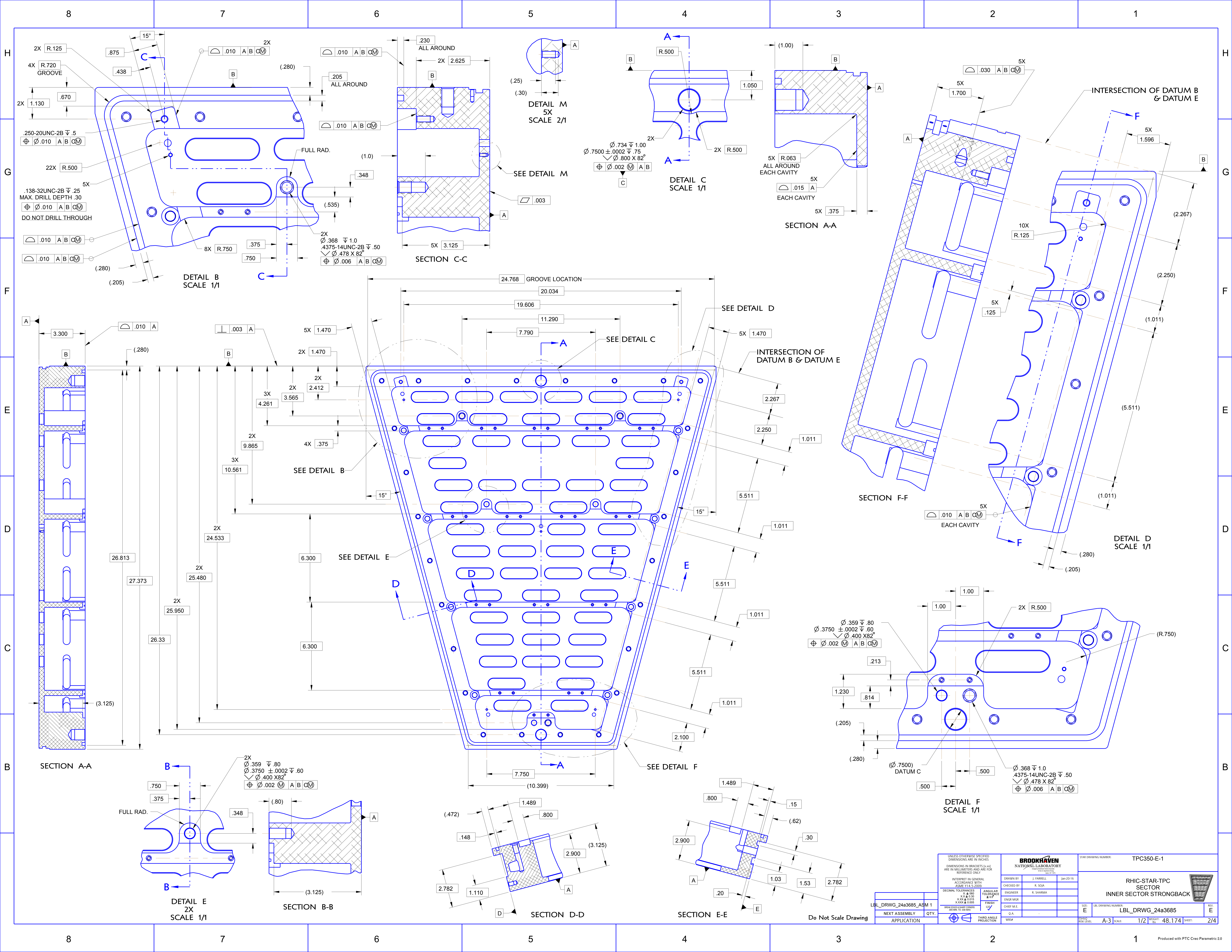
NOTES:
 1. MATERIAL: ALUM. ALLOY 6061-T651 per ASTM B209, KAISER ALUMINUM PRECISION PLATE OR ALCOA TYPE 200 WROUGHT TOOLING PLATE.
 2. MACHINING VENDOR TO FURNISH A COPY OF THE PLATE CERTIFICATION.
 3. STEEL STAMP PART WITH DRAWING NUMBER & REVISION LETTER, (24A3685 REV.E), WITH .375" CHARACTERS IN ACCORDANCE WITH MIL-STD-130. LOCATE APPROXIMATELY WHERE SHOWN.
 4. TAG WITH DRAWING NUMBER & REVISION LETTER IN ACCORDANCE WITH MIL-STD-130.
 5. WEIGHT OF PART MACHINED AS SHOWN IN BOM IS APPROXIMATE.
 6. "BREAK-OUT POINTS" ARE SYMMETRICAL ABOUT DATUM PLANE C.
 7. DATUM PLANES D & E ARE THE STEPPED-BACK SURFACES WITH THE .3125-18UNC-2B HOLE PATTERN.
 8. THIS DRAWING SHALL BE USED WITH MODEL 24A3685 REV_E FOR COMPLETE PRODUCT DEFINITION. VALUES QUERIED FROM 3-D DIGITAL DATA FILE ARE BASIC.

REVISIONS						
REV	ECN NO	DESCRIPTION	BY	DATE	CHK	APP
E		RECONSTRUCTED MODEL & DRAWING USING PTC CREO 2.0 PARAMETRIC. REVISED DIMENSIONING SCHEME TO ASME Y14.5-2009 & CONVENTIONS FROM OUTER SECTOR LBL DRAWING 24A3685G. ADDED MISSING DIMENSIONS IN ORIGINAL LBL DRAWING 24A3685 REV.D. MOVED 55 SLOTS ON DATUM A TOWARD NARROW END "BOTTOM" OF SECTOR. ADDED WIRE ACCESS GROOVES & TAPPED HOLES ADJACENT TO PAD PLANE AT TOP & BOTTOM OF SECTOR TO ACCOMMODATE PCB WALLS BETWEEN INNER & OUTER SECTORS. NOTE 10X .112-40UNC. WAS 6X. SHEET 3, ZONE E2.	JF	1/27/2016	RS	
				2/22/2016		

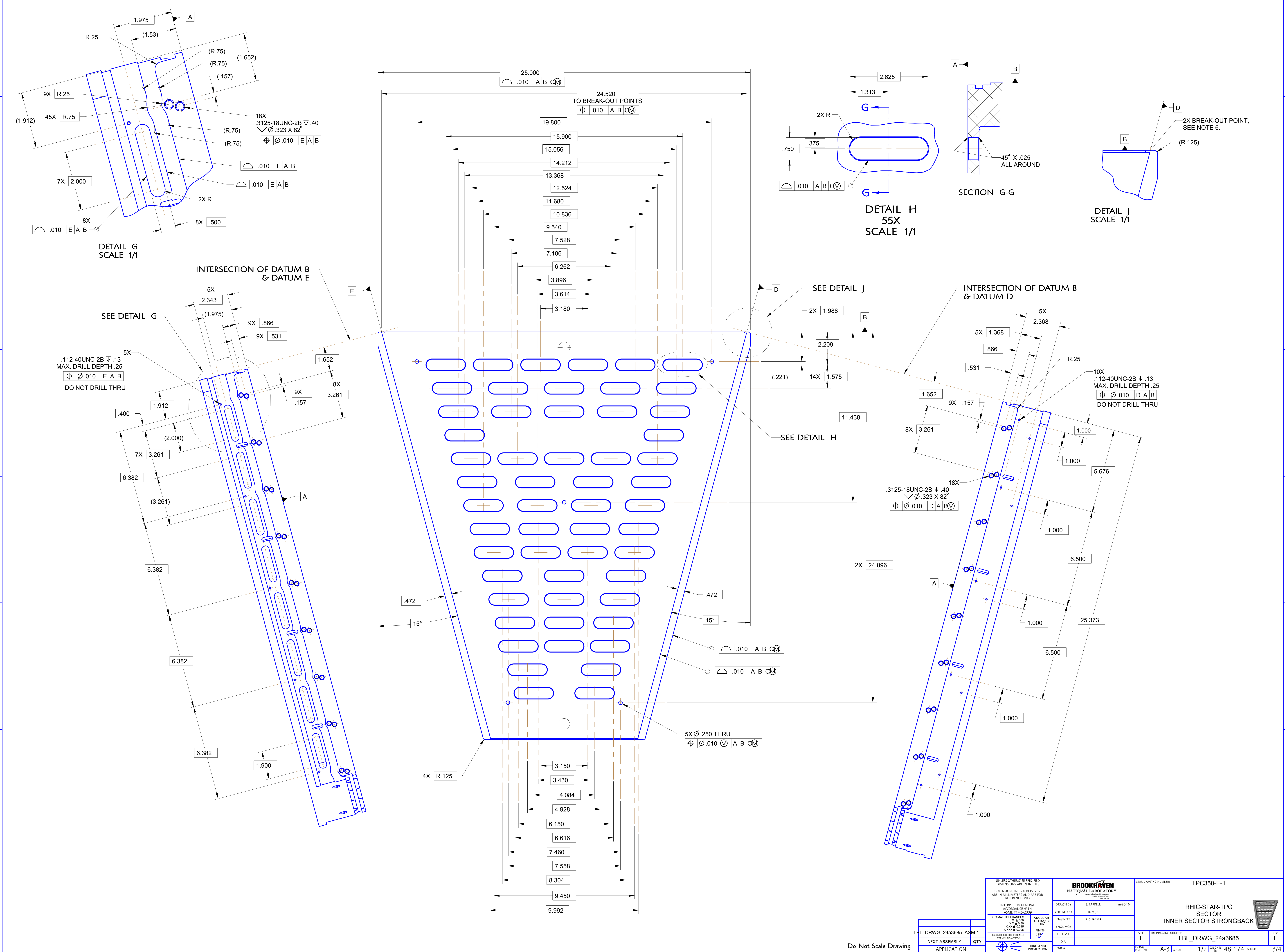


UNLESS OTHERWISE SPECIFIED DIMENSIONS ARE IN INCHES. DIMENSIONS IN BRACKETS [x.xx] ARE IN MILLIMETERS AND ARE FOR REFERENCE ONLY.	BROOKHAVEN NATIONAL LABORATORY <small>Brookhaven National Laboratory U.S. Department of Energy 895 Route 9W, Upton, NY 11970-5000 Tel: 516/336-7000 Fax: 516/336-7500</small>		STAR DRAWING NUMBER: TPC350-E-1
INTERPRET IN GENERAL ACCORDANCE WITH ASME Y14.5-2009	DRAWN BY: J. FARRELL CHECKED BY: R. SOJA ENGINEER: R. SHARMA ENGR MGR: CHIEF M.E.: O.A.: WSP:	DATE: Jan-20-16 TITLE: RHIC-STAR-TPC SECTOR INNER SECTOR STRONGBACK	SIZE: E LBL DRAWING NUMBER: LBL_DRWG_24a3685 REV: E
DECIMAL TOLERANCES: .000, .005, .010, .015, .030, .050, .100, .150, .300, .500, 1.000	ANGULAR TOLERANCES: ±.005, ±.010, ±.020, ±.050, ±.100, ±.150, ±.300, ±.500, ±1.000, ±1.500, ±3.000, ±4.500, ±9.000, ±15.000, ±30.000, ±45.000, ±90.000, ±135.000, ±180.000	SCALE: A-3 SCALE: 1/2 SHEET: 1/4	PRODUCED WITH PTC CREO PARAMETRIC 2.0

Do Not Scale Drawing

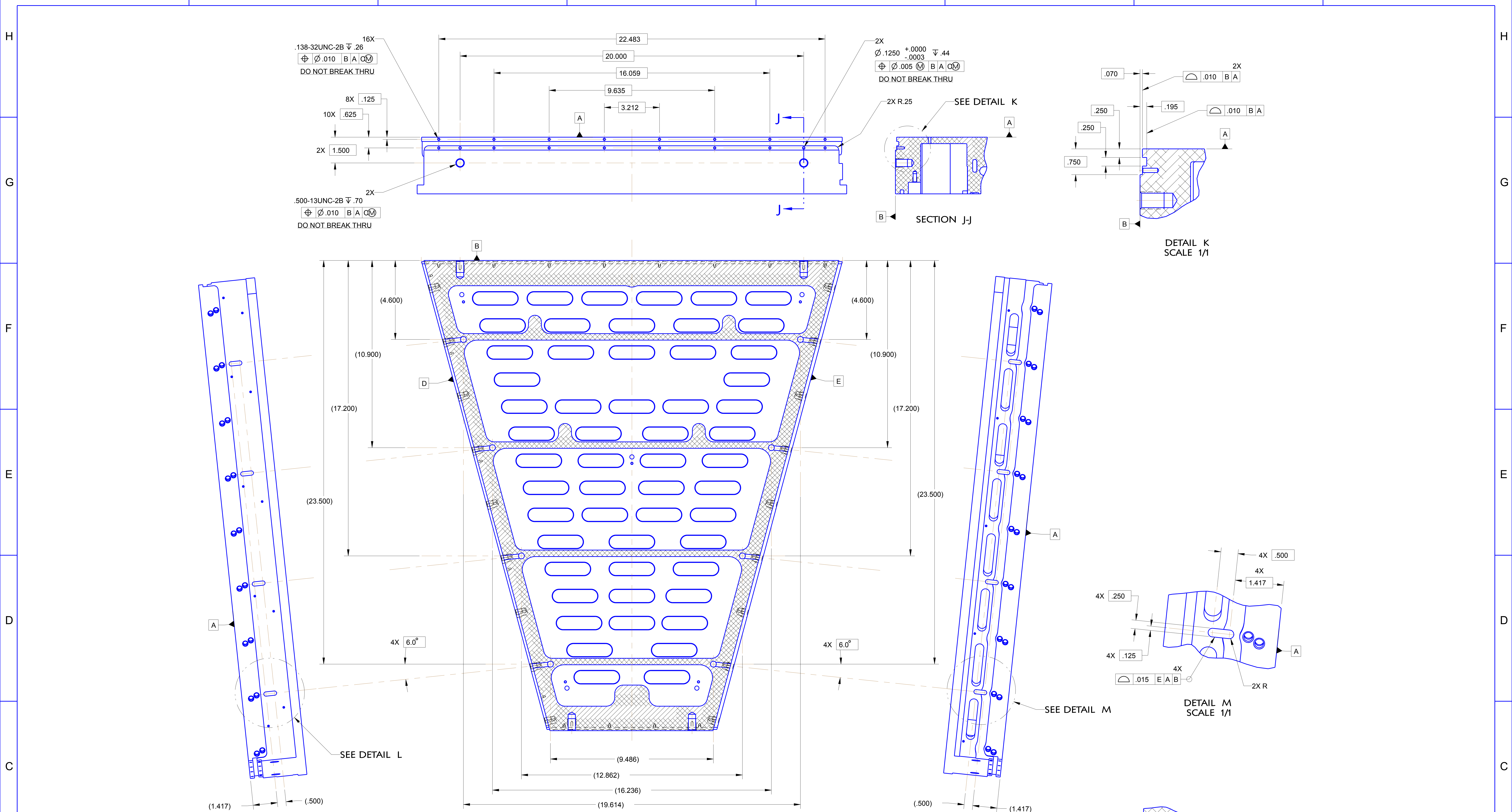


UNLESS OTHERWISE SPECIFIED DIMENSIONS ARE IN INCHES DIMENSIONS IN BRACKETS [] ARE IN MILLIMETERS AND ARE FOR REFERENCE ONLY		BROOKHAVEN NATIONAL LABORATORY STAR DRAWING NUMBER: TPC350-E-1	
INTERPRET IN GENERAL ACCORDANCE WITH ASME Y14.5-2009	DRAWN BY: J. FARRELL CHECKED BY: R. SOJA ENGINEER: R. SHARMA ENGR MGR: CHIEF M.E.: O.A.: WSP:	DATE: Jan-20-16 SIZE: E DESIG. STA. LEVEL: A-3	PROJECT: RHIC-STAR-TPC SECTOR INNER SECTOR STRONGBACK LBL_DRAWG_24a3685 SHEET: 2/4
DECIMAL TOLERANCES: .0005	ANGULAR TOLERANCES: $\pm .0005$	FINISH: 127 THIRD ANGLE PROJECTION	REV. E
LBL_DRAWG_24a3685_ASM 1 NEXT ASSEMBLY: APPLICATION	QTY:	Do Not Scale Drawing	Produced with PTC Creo Parametric 2.0



UNLESS OTHERWISE SPECIFIED DIMENSIONS ARE IN INCHES. DIMENSIONS IN BRACKETS [] ARE IN MILLIMETERS AND ARE FOR REFERENCE ONLY.		BROOKHAVEN NATIONAL LABORATORY		STAR DRAWING NUMBER: TPC350-E-1	
INTERPRET IN GENERAL ACCORDANCE WITH ASME Y14.5-2009		DRAWN BY: J. FARRELL		DATE: Jan-2010	
DECIMAL TOLERANCES	ANGULAR TOLERANCES	ENGINEER	R. SOJA		
.XX	.01	ENGR MGR	R. SHARMA		
.XXX	.005	CHIEF M.E.			
.XXXX	.0005	DATE			
THIRD ANGLE PROJECTION		Q.A.			
LBL_DRWG_24a3685_ASM 1		WSP#			
NEXT ASSEMBLY		QTY.			
APPLICATION		PROJ#			
		DESIGN LEVEL	A-3		SCALE: 1/2
		BREQ#	48.174		SHEET: 3/4

Do Not Scale Drawing



.138-32UNC-2B V.26
 $\phi \pm .010$ B A A
 DO NOT BREAK THRU

16X

8X .125

10X .625

2X 1.500

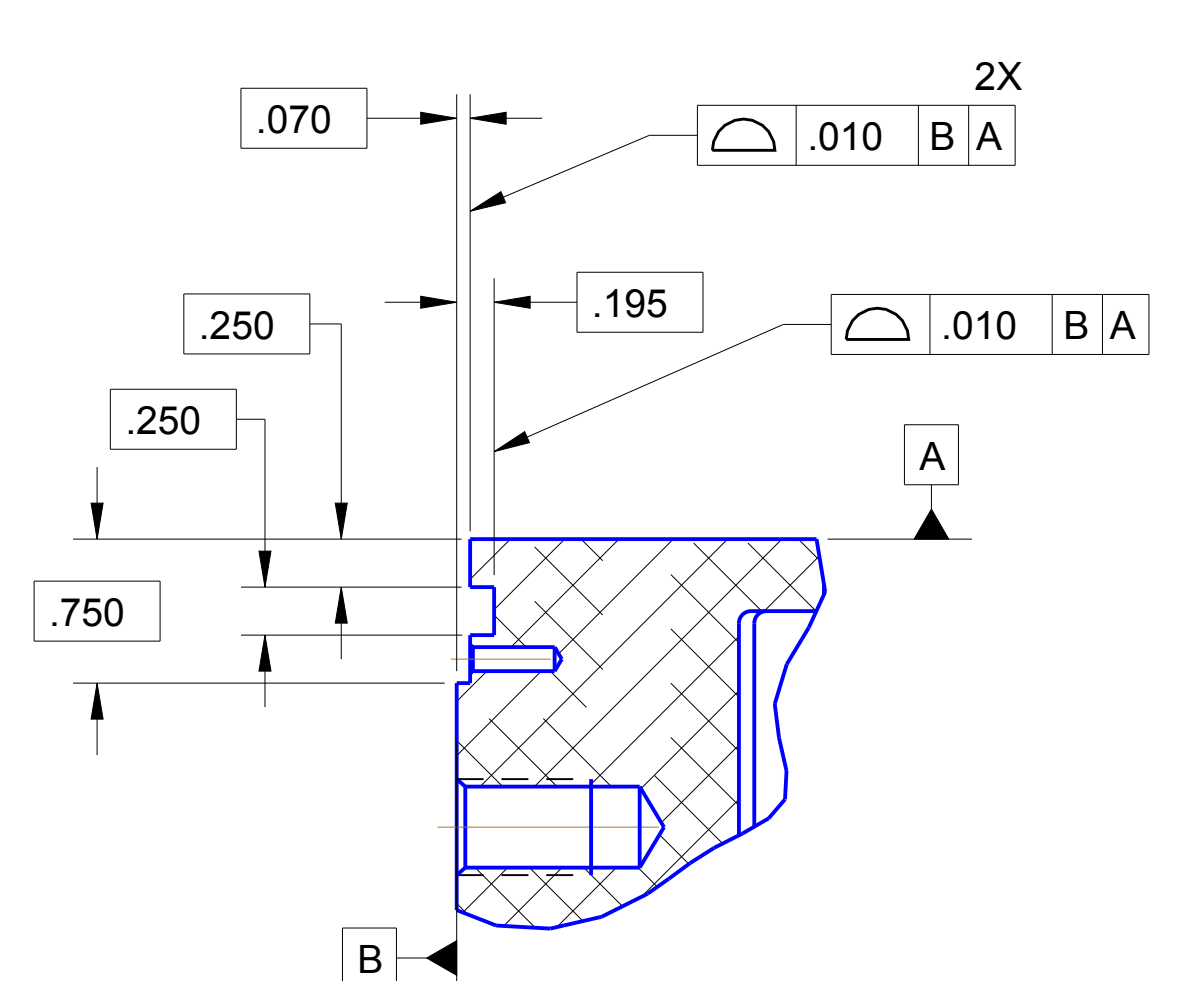
.500-13UNC-2B V.70
 $\phi \pm .010$ B A A
 DO NOT BREAK THRU

2X

2X
 $\phi .1250^{+.0000}_{-.0003}$ V.44
 $\phi \pm .005$ B A A
 DO NOT BREAK THRU

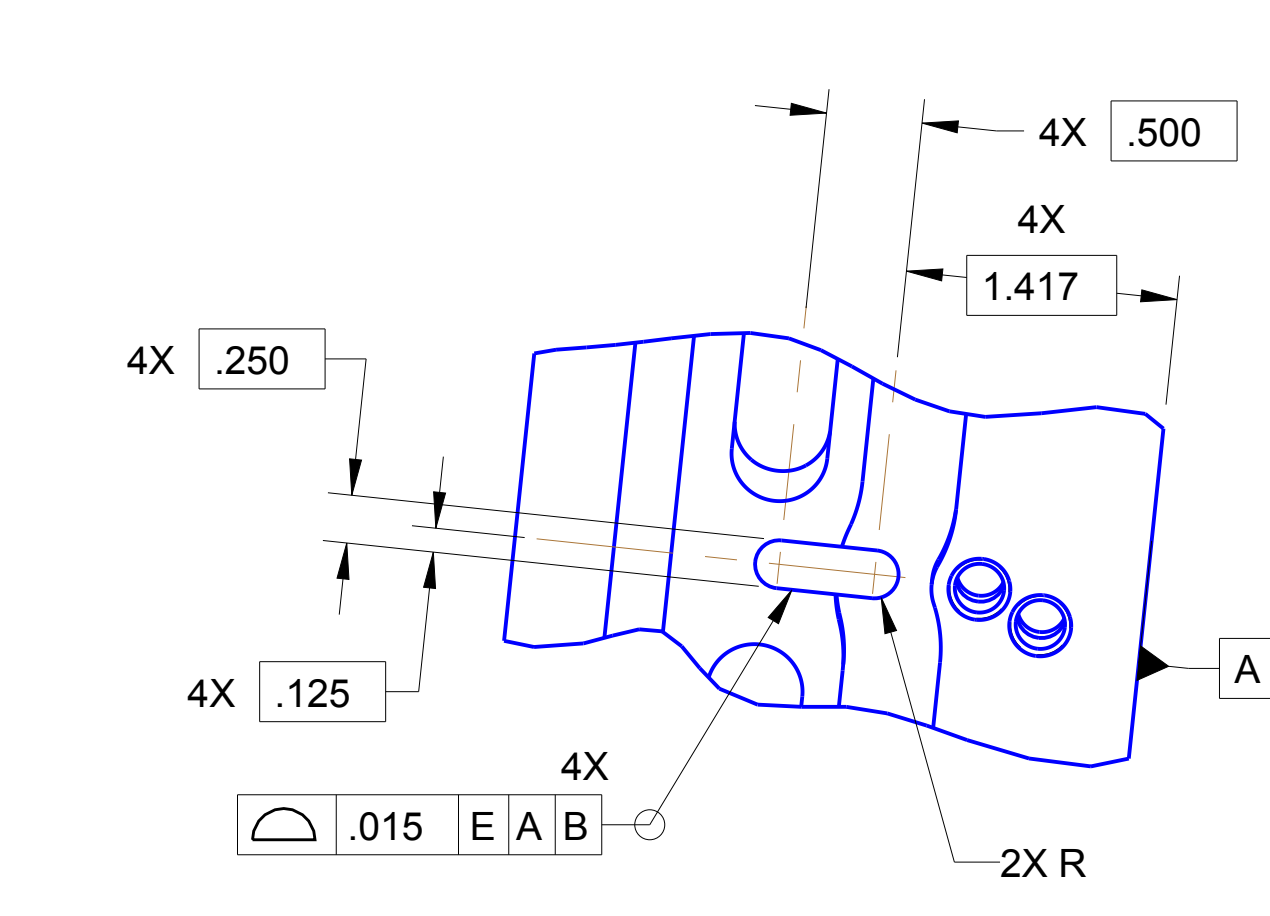
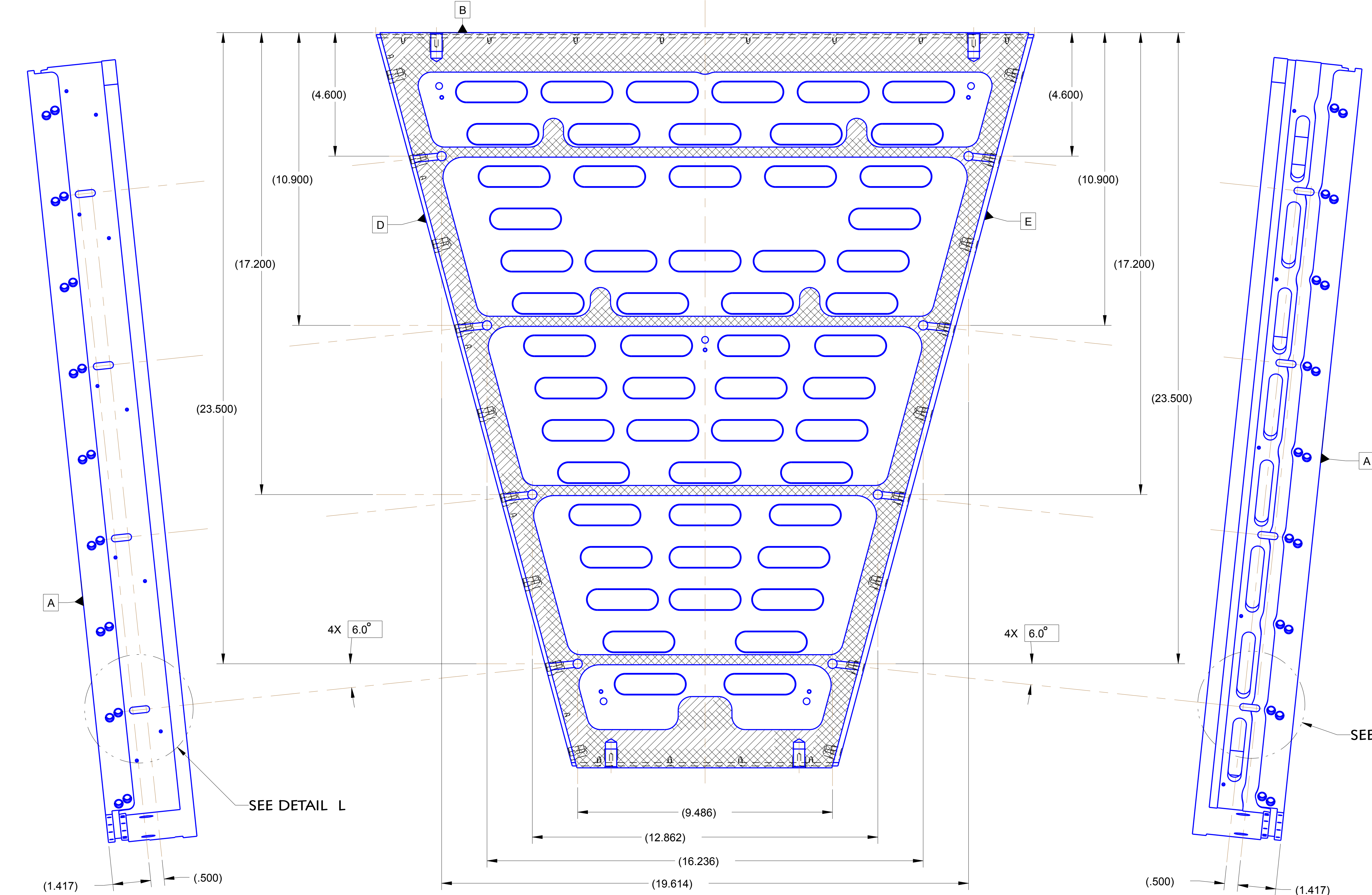
2X R.25

SEE DETAIL K

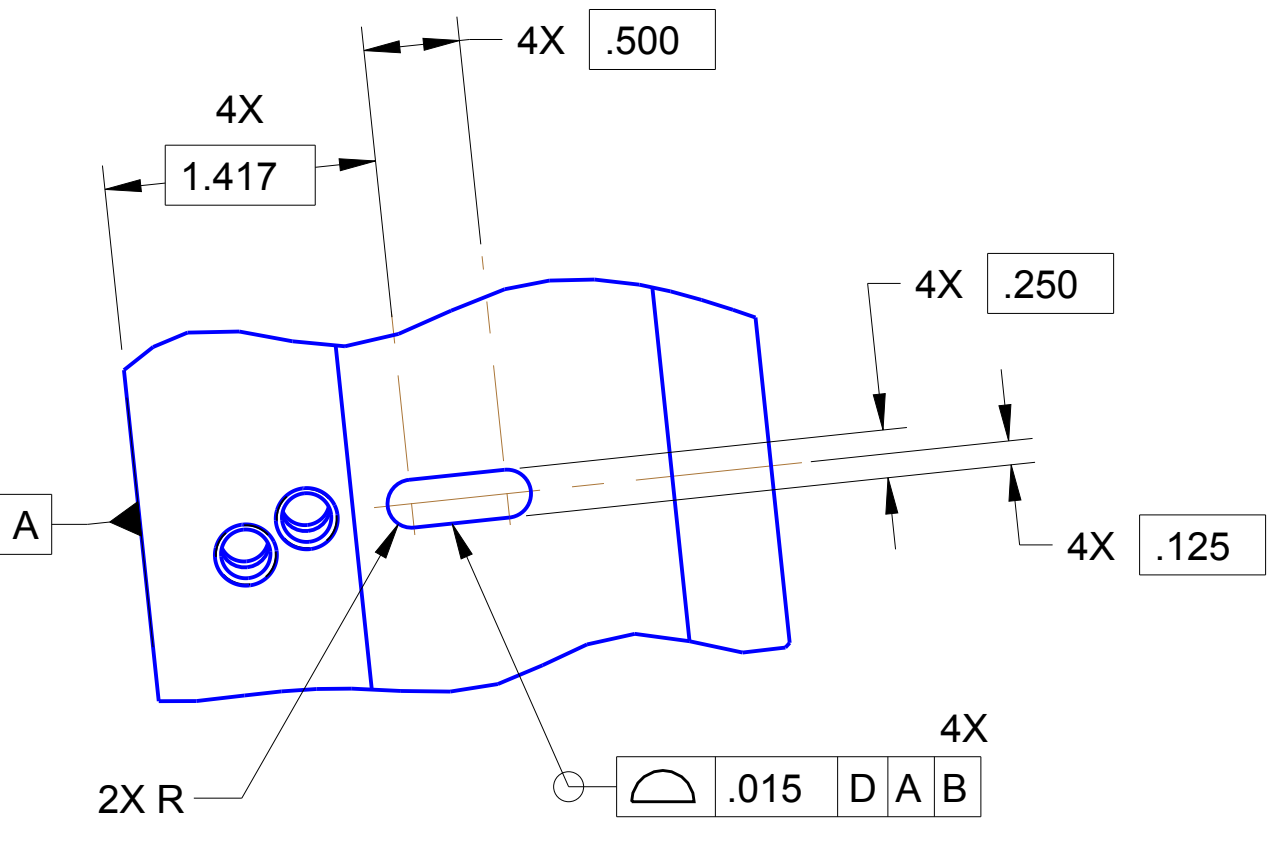


SECTION J-J

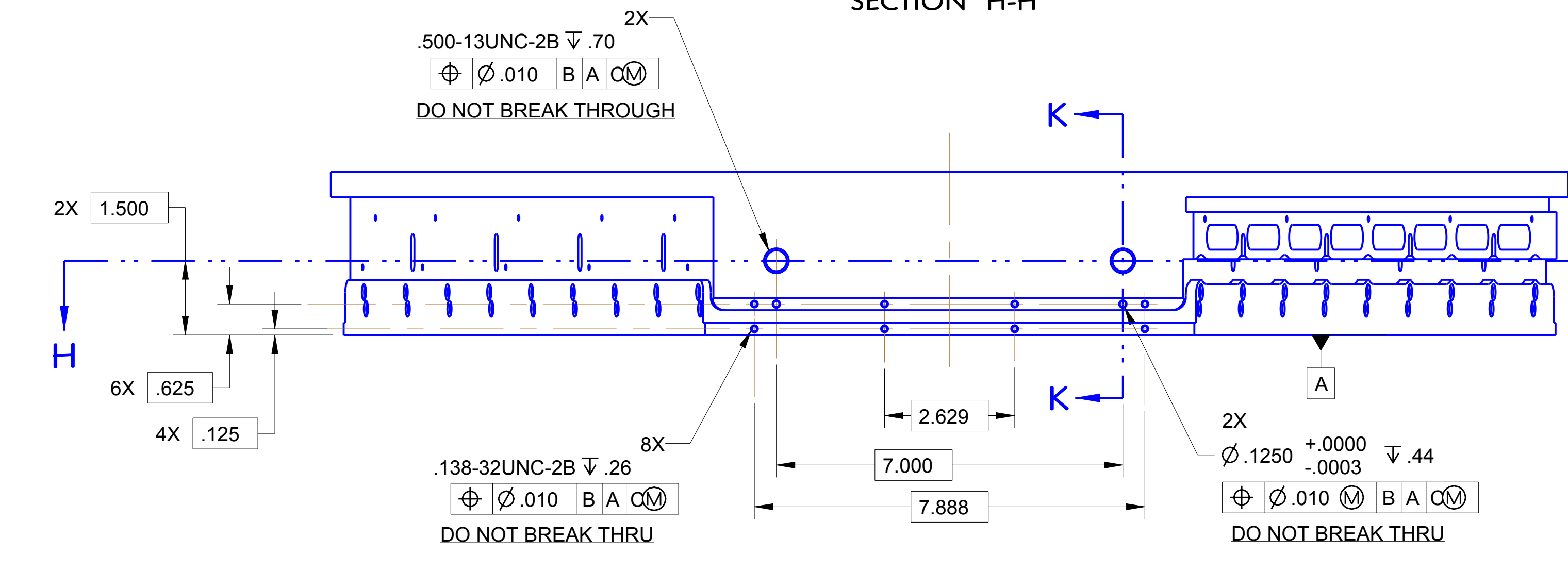
DETAIL K
 SCALE 1/1



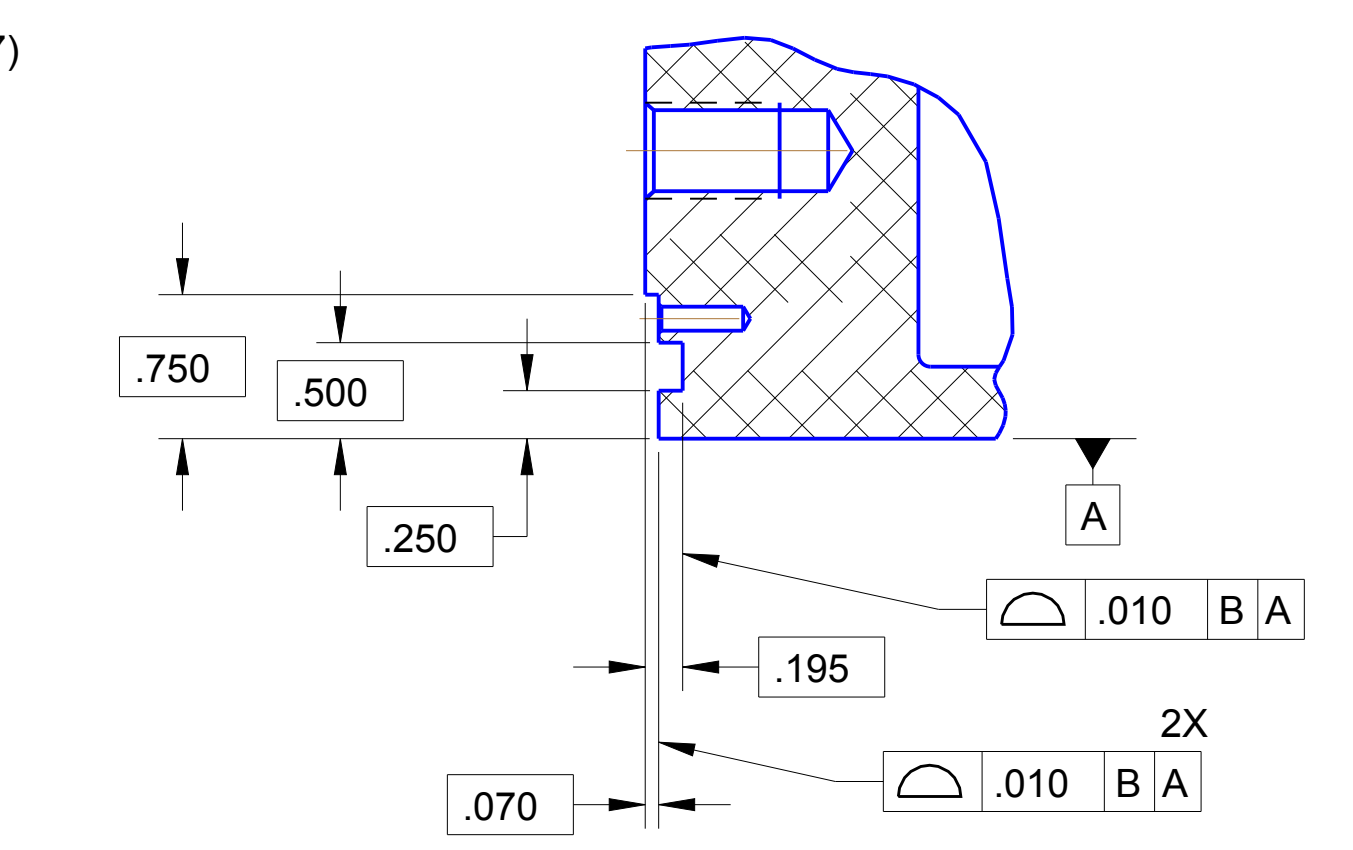
DETAIL M
 SCALE 1/1



DETAIL L
 SCALE 1/1



SECTION K-K



DETAIL N
 SCALE 1/1

UNLESS OTHERWISE SPECIFIED DIMENSIONS ARE IN INCHES DIMENSIONS IN BRACKETS [] ARE IN MILLIMETERS AND ARE FOR REFERENCE ONLY		BROOKHAVEN NATIONAL LABORATORY <small>ATYON</small>		STAR DRAWING NUMBER: TPC350-E-1
INTERPRET IN GENERAL ACCORDANCE WITH ASME Y14.5-2009	ANGULAR TOLERANCE MUNIP FINISH 137	DRAWN BY: J. FARRELL CHECKED BY: R. SOJA ENGINEER: R. SHARMA ENGR MGR: CHIEF M.E. O.A. WBS#	JUN-20-10 JUN-20-10 JUN-20-10 JUN-20-10 JUN-20-10 JUN-20-10	RHIC-STAR-TPC SECTOR INNER SECTOR STRONGBACK
DECIMAL TOLERANCES: X.XX ± .005 X.XXX ± .001	DECIMAL TOLERANCES: X.XX ± .005 X.XXX ± .001	LBL_DRWG_24a3685_ASM 1 NEXT ASSEMBLY APPLICATION	QTY. QTY. QTY.	SIZE: E LBL DRAWING NUMBER: LBL_DRWG_24a3685 REV: E
Do Not Scale Drawing		THIRD ANGLE PROJECTION		SCALE: A-3 SCALE: 1/2 DIM: 48.174 SHEET: 4/4